

LEA Name : Reading SD  
Address : 800 Washington St  
Reading , PA 19601

County : Berks  
AUN Number : 114067002  
LEA Type : SD

## Annual Financial Report Accuracy Certification Statement

For Fiscal Year Ending  
**6/30/2020**

Pennsylvania Department of Education  
&  
Office of Comptroller Operations

PDE-2056: Intermediate Unit  
PDE-2057: School District, AVTS/CTC, Charter School,  
and Special Program Jointure

**CERTIFICATION: By signing this page I agree that the electronic data submitted is a complete and accurate statement of the financial operations and status of the local education agency for the fiscal year. It has been prepared in accordance with generally accepted accounting principles and established Commonwealth of PA reporting guidelines.**

  
Chief School Administrator Signature

1/6/21  
Date

  
Board Secretary Signature

1/6/21  
Date

Wayne O Gehris

Contact Person

gehrisw@readingsd.org

Contact Person E-mail Address

(484)258-7061 Ext :

Contact Person Telephone Number

(610)371-5833

Contact Person Fax Number

**Audit Certification**  
**Annual Financial Report:**  
For Fiscal Year Ending 6/30/2020  
(Pursuant to PA School Code Section 218(b))

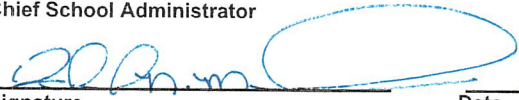
LEA Name : Reading SD  
AUN Number : 114067002  
County : Berks

<b>Audit Certification Due:</b> 12/31/2020
---

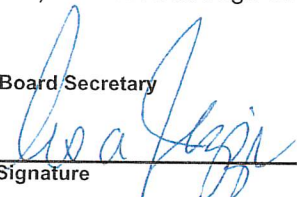
This certification is applicable to the Annual Financial Report data submitted through the Consolidated Financial Reporting System (CFRS).

CERTIFICATION: By signing this page I agree that the financial statements of the school have been properly audited as noted above pursuant to Article XXIV, and in the auditor's professional opinion, the Annual Financial Report (PDE-2057) submitted through CFRS is materially consistent with the audited financial statements.

Chief School Administrator

  
Signature \_\_\_\_\_ Date 1/6/21

Board Secretary

  
Signature \_\_\_\_\_ Date 1/6/21

Wayne O Gehris

\_\_\_\_\_  
Contact Person

gehrisw@readingsd.org

\_\_\_\_\_  
Contact Person E-mail Address

(484)258-7061

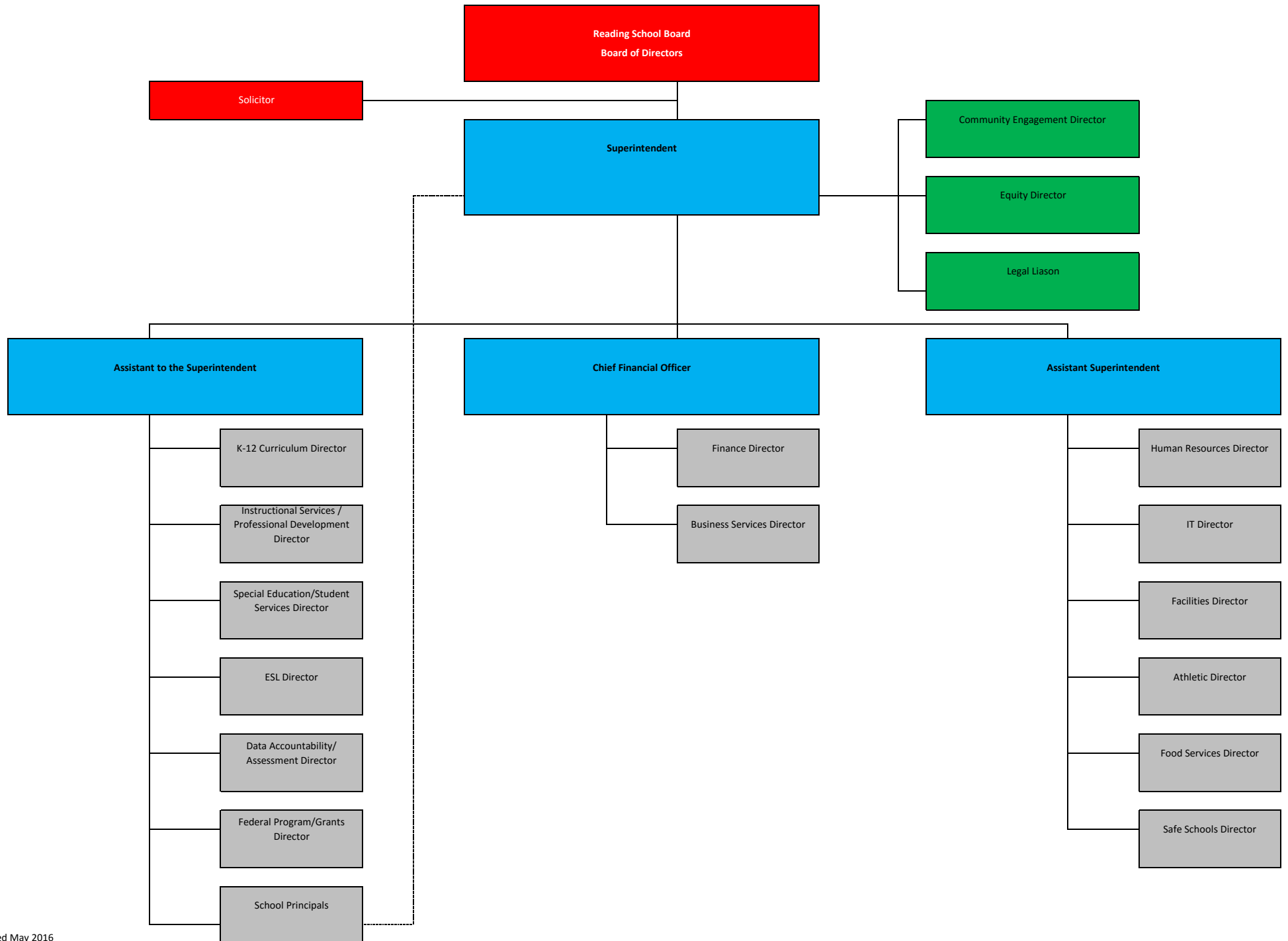
Ext :

\_\_\_\_\_  
Contact Person Telephone Number

(610)371-5833

\_\_\_\_\_  
Contact Person Fax Number

**READING SCHOOL DISTRICT  
LEADERSHIP TEAM ORGANIZATIONAL CHART**





Book	Policy Manual
Section	600 Finances
Title	GASB Statement 34
Code	622
Status	Active
Adopted	June 28, 2006

### **Purpose**

The Board recognizes the need to implement the required accounting and financial reporting standards stipulated by the Pennsylvania Department of Education.[\[1\]](#)

The primary objectives of implementing the GASB Statement 34 are to assure compliance with state requirements, and properly account for both the financial and economic resources of the district.

### **Authority**

Participation of the school district in any such activity shall be in accordance with Board policy.[\[2\]](#)

### **Delegation of Responsibility**

The responsibility to coordinate the compilation and preparation of all information necessary to implement this policy is delegated to the Director of Business Affairs.

The designated individual shall be responsible for implementing the necessary procedures to establish and maintain a fixed asset inventory, including depreciation schedules. Depreciation shall be computed on a straight-line basis over the useful lives of the assets, using an averaging convention. Normal maintenance and repairs shall be charged to expense as incurred; major renewals and betterments that materially extend the life or increase the value of the asset shall be capitalized. A schedule of accumulated depreciation shall be consistent from year to year. The basis for depreciation, including groups of assets and useful lives, shall be in writing and submitted for review to the Board.

The Director of Business Affairs shall prepare the required Management Discussion and Analysis (MD&A). The MD&A shall be in the form required by GASB Statement 34 and shall be submitted to the Board for approval, prior to publication.

Prior to submission of the MD&A for Board approval, the district's independent auditors shall review the MD&A, in accordance with SAS No. 52, "Required Supplementary Information."

### **Guidelines**

In order to associate debt with acquired assets and to avoid net asset deficits, any asset that has been acquired with debt proceeds shall be capitalized, regardless of the cost of the asset. The asset

life of these assets shall be considered relative to the time of the respective debt amortizations.

For all other assets not acquired by debt proceeds, the dollar value of any single item for inclusion in the fixed assets accounts shall be not less than \$4,000.

The capitalization threshold shall be set at a level that will capture at least 80% of all fixed assets.

The assets listed below do not normally individually meet capitalization threshold criteria:

1. Library books.
2. Classroom texts.
3. Computer equipment.
4. Classroom furniture.

These asset category costs shall be capitalized and depreciated as groups when that group's acquisition cost exceeds the capitalization threshold in any given fiscal year.

For group asset depreciation purposes, the estimated useful life of the group may be based on the weighted average or simple average of the useful life of individual items, or on an assessment of the life of the group as a whole. Periodically, the district shall review the estimated life of groups of assets and adjust the remaining depreciation life of the group.

Assets that fall below the capitalization threshold for GASB 34 reporting purposes may still be significant for insurance, warranty service, and obsolescence/ replacement policy tracking purposes. The district may record and maintain these non-GASB 34 asset inventories in subsidiary ledgers.

- Legal
1. 24 P.S. 613
  2. 24 P.S. 218

<u>Val Number</u>	<u>Description</u>	<u>Justification</u>
11085	Data has been reported on the REG within Fund #28 – Other Comptroller Approved Special Revenue Fund. Please identify the title and function of this fund.	Fund #28 is the Reading School District's Special Revenue - Student Activity Fund for all Elementary Schools.
50160	SOIN: All Governmental Fund General Obligation Bonds must include an amount for Interest Paid during Fiscal Year. Correct data or enter a justification.	Capital Appreciation Bonds are issued as "discount bonds" form their principal face amount, they do not pay periodic interest and they mature at their principal face value.
50180	SOIN: All Governmental Fund General Obligation Bonds must include an amount for Amount Due Within One Year (Principal and Interest). Correct data or enter a justification.	Capital Appreciation Bonds are issued as "discount bonds" form their principal face amount, they do not pay periodic interest and they mature at their principal face value.
50440	SESS - 2260 Instruction and Curriculum Development Services: SESS Schedule amounts for Special Education vary from prior year by 40% or more. Correct the data or enter a justification.  SESS Schedule 2260: \$299,425.94 Prior Year SESS Schedule 2260: \$60,269.30	Instruction and Curriculum Development Services have increased significantly due to additional staffing.
50450	SESS - 2350 Legal and Accounting Services: SESS Schedule amounts for Special Education vary from prior year by 40% or more. Correct the data or enter a justification.  SESS Schedule 2350: \$244,809.14 Prior Year SESS Schedule 2350: \$165,287.48	Reviewed Legal and Accounting Services, however the increase is due to additional legal representation required by the Reading School District.

Amounts Expressed in Whole Dollars		<u>General Fund</u> <u>(10)</u>	<u>Student Sponsored</u> <u>Activity Fund</u> <u>(21)</u>	<u>Public Purpose Trust</u> <u>(27)</u>	<u>Other Compt Approved</u> <u>(28)</u>	<u>Athletic / Activity</u> <u>(29)</u>
<b>Assets And Deferred Outflows Of Resources</b>						
<b>Assets</b>						
0100	Cash and Cash Equivalents	42,910,774			157,134	
0110	Investments	26,927,950				
0120	Taxes Receivable	7,889,454				
0130	Due From Other Funds	17,684,905				
0141	Due From Other Governments	3,351,781				
0142	State Revenue Receivable	14,957,240				
0143	Federal Revenue Receivable	3,586,301				
0145	Other Intergovernmental Revenue Receivable					
0146	Due from Primary Government					
0147	Due from Component Unit					
0150	Other Receivables	1,581,212				
0170	Inventories					
0180	Prepaid Expenses (Expenditures)					
0190	Other Current Assets					
<b>Total Assets</b>		<b>\$118,889,617</b>			<b>\$157,134</b>	
0910	Deferred Outflows of Resources					
<b>Total Assets And Deferred Outflows Of Resources</b>		<b>\$118,889,617</b>			<b>\$157,134</b>	

LEA : 114067002      Reading SD

Printed 1/7/2021 9:11:42 AM

Amounts Expressed in Whole Dollars		<u>Capital Reserve (690.</u> <u>1850)</u> <u>(31)</u>	<u>Capital Reserve (1431)</u> <u>(32)</u>	<u>Other Capital Projects</u> <u>Fund</u> <u>(39)</u>	<u>Debt Service</u> <u>(40)</u>	<u>Permanent</u> <u>(90)</u>
<b>Assets And Deferred Outflows Of Resources</b>						
<b>Assets</b>						
0100	Cash and Cash Equivalents			45,798,636	5,059,678	
0110	Investments					
0120	Taxes Receivable					
0130	Due From Other Funds					
0141	Due From Other Governments					
0142	State Revenue Receivable					
0143	Federal Revenue Receivable					
0145	Other Intergovernmental Revenue Receivable					
0146	Due from Primary Government					
0147	Due from Component Unit					
0150	Other Receivables					
0170	Inventories					
0180	Prepaid Expenses (Expenditures)					
0190	Other Current Assets					
<b>Total Assets</b>				<b>\$45,798,636</b>	<b>\$5,059,678</b>	
0910	Deferred Outflows of Resources					
<b>Total Assets And Deferred Outflows Of Resources</b>				<b>\$45,798,636</b>	<b>\$5,059,678</b>	



LEA : 114067002      Reading SD

Printed 1/7/2021 9:11:42 AM

Amounts Expressed in Whole Dollars		<u>Total Governmental</u>
		<u>Funds</u>
<b>Assets And Deferred Outflows Of Resources</b>		
<b>Assets</b>		
0100 Cash and Cash Equivalents	93,926,222	
0110 Investments	26,927,950	
0120 Taxes Receivable	7,889,454	
0130 Due From Other Funds	17,684,905	
0141 Due From Other Governments	3,351,781	
0142 State Revenue Receivable	14,957,240	
0143 Federal Revenue Receivable	3,586,301	
0145 Other Intergovernmental Revenue Receivable		
0146 Due from Primary Government		
0147 Due from Component Unit		
0150 Other Receivables	1,581,212	
0170 Inventories		
0180 Prepaid Expenses (Expenditures)		
0190 Other Current Assets		
<b>Total Assets</b>	<b>\$169,905,065</b>	
0910 Deferred Outflows of Resources		
<b>Total Assets And Deferred Outflows Of Resources</b>	<b>\$169,905,065</b>	

LEA : 114067002      Reading SD

Printed 1/7/2021 9:11:42 AM

Amounts Expressed in Whole Dollars	General Fund (10)	Student Sponsored Activity Fund (21)	Public Purpose Trust (27)	Other Compt Approved (28)	Athletic / Activity (29)
Liabilities And Deferred Inflows Of Resources And Fund Balances					
Liabilities					
0400 Due to Other Funds	3,508,439				
0411 Due to Other Governments					
0412 Due to Primary Government					
0413 Due to Component Unit					
0420 Accounts Payable	18,352,756			5,210	
0430 Contracts Payable					
0440 Current Portion of Long-Term Debt					
0450 Short-Term Payables					
0461 Accrued Salaries and Benefits					
0462 Payroll Deductions and Withholding	34,715,083				
0480 Unearned Revenues	967,763				
0490 Other Current Liabilities					
Total Liabilities	\$57,544,041			\$5,210	
0950 Deferred Inflows of Resources	5,989,708				
Fund Balances					
0810 Nonspendable Fund Balance					
0820 Restricted Fund Balance	18,914,442				
0830 Committed Fund Balance					
0840 Assigned Fund Balance				151,924	
0850 Unassigned Fund Balance	36,441,426				
Total Fund Balances	\$55,355,868			\$151,924	
Total Liabilities, Deferred Inflows Of Resources And Fund Balances	\$118,889,617			\$157,134	

LEA : 114067002      Reading SD

Printed 1/7/2021 9:11:42 AM

Amounts Expressed in Whole Dollars		<u>Capital Reserve (690.</u> <u>1850)</u> <u>(31)</u>	<u>Capital Reserve (1431)</u> <u>(32)</u>	<u>Other Capital Projects</u> <u>Fund</u> <u>(39)</u>	<u>Debt Service</u> <u>(40)</u>	<u>Permanent</u> <u>(90)</u>
<b>Liabilities And Deferred Inflows Of Resources And Fund Balances</b>						
<b>Liabilities</b>						
0400	Due to Other Funds					
0411	Due to Other Governments					
0412	Due to Primary Government					
0413	Due to Component Unit					
0420	Accounts Payable					
0430	Contracts Payable					
0440	Current Portion of Long-Term Debt					
0450	Short-Term Payables					
0461	Accrued Salaries and Benefits					
0462	Payroll Deductions and Withholding					
0480	Unearned Revenues					
0490	Other Current Liabilities					
<b>Total Liabilities</b>						
0950	Deferred Inflows of Resources					
<b>Fund Balances</b>						
0810	Nonspendable Fund Balance					
0820	Restricted Fund Balance			3,640,428		
0830	Committed Fund Balance					
0840	Assigned Fund Balance			42,158,208	5,059,678	
0850	Unassigned Fund Balance					
<b>Total Fund Balances</b>				<b>\$45,798,636</b>	<b>\$5,059,678</b>	
<b>Total Liabilities, Deferred Inflows Of Resources And Fund Balances</b>				<b>\$45,798,636</b>	<b>\$5,059,678</b>	

Amounts Expressed in Whole Dollars		<u>Total Governmental</u> <u>Funds</u>
<b>Liabilities And Deferred Inflows Of Resources And Fund Balances</b>		
<b>Liabilities</b>		
0400 Due to Other Funds		3,508,439
0411 Due to Other Governments		
0412 Due to Primary Government		
0413 Due to Component Unit		
0420 Accounts Payable		18,357,966
0430 Contracts Payable		
0440 Current Portion of Long-Term Debt		
0450 Short-Term Payables		
0461 Accrued Salaries and Benefits		
0462 Payroll Deductions and Withholding		34,715,083
0480 Unearned Revenues		967,763
0490 Other Current Liabilities		
<b>Total Liabilities</b>		<b>\$57,549,251</b>
0950 Deferred Inflows of Resources		5,989,708
<b>Fund Balances</b>		
0810 Nonspendable Fund Balance		
0820 Restricted Fund Balance		22,554,870
0830 Committed Fund Balance		
0840 Assigned Fund Balance		47,369,810
0850 Unassigned Fund Balance		36,441,426
<b>Total Fund Balances</b>		<b>\$106,366,106</b>
<b>Total Liabilities, Deferred Inflows Of Resources And Fund Balances</b>		<b>\$169,905,065</b>

Amounts Expressed in Whole Dollars	<u>General Fund</u> <u>(10)</u>	<u>Student Sponsored</u> <u>Activity Fund</u> <u>(21)</u>	<u>Public Purpose Trust</u> <u>(27)</u>	<u>Other Compt Approved</u> <u>(28)</u>	<u>Athletic / Activity</u> <u>(29)</u>
<b>Revenues</b>					
6000 Revenue from Local Sources	46,960,645			107,289	
7000 Revenue from State Sources	210,694,894				
8000 Revenue from Federal Sources	19,000,221				
<b>Total Revenues</b>	<b>\$276,655,760</b>			<b>\$107,289</b>	
<b>Expenditures</b>					
1000 Instruction	167,855,865				
2000 Support Services	78,584,950				
3000 Operation of Non-Instructional Services	3,275,632			73,291	
4000 Facilities Acquisition, Construction and Improvement Services	5,135,247				
5110 Debt Service	24,292,421				
5130 Refund of Prior Year Revenues / Receipts	224,658				
<b>Total Expenditures</b>	<b>\$279,368,773</b>			<b>\$73,291</b>	
<b>Excess (Deficiency) Of Revenues Over Expenditures</b>	<b>(\$2,713,013)</b>			<b>\$33,998</b>	
<b>Other Financing Sources (Uses)</b>					
9110 Face Value of Bonds Issued					
9120 Proceeds from Refunding of Bonds					
9130 Bond Premiums					
9200 Proceeds from Extended-Term Financing					
9300 Interfund Transfers - IN	601,467				
9400 Sale of or Compensation for Loss of Fixed Assets	301,676				
9710 Transfers from Component Units					
9720 Transfers from Primary Governments					
9910 Other Financing Sources Not Listed in the 9000 Series					
9990 Insurance Recoveries	25,366				
5120 Debt Service – Refunded Bonds					
5150 Bond Discounts					
5200 Interfund Transfers – Out					
5300 Transfers Out to Component Units/Primary Governments					
<b>Total Other Financing Sources (Uses)</b>	<b>\$928,509</b>				

Amounts Expressed in Whole Dollars	<u>Capital Reserve (690.1850)</u> <u>(31)</u>	<u>Capital Reserve (1431)</u> <u>(32)</u>	<u>Other Capital Projects</u> <u>Fund</u> <u>(39)</u>	<u>Debt Service</u> <u>(40)</u>	<u>Permanent</u> <u>(90)</u>
<b>Revenues</b>					
6000 Revenue from Local Sources			363,258	59,678	
7000 Revenue from State Sources					
8000 Revenue from Federal Sources					
<b>Total Revenues</b>			<b>\$363,258</b>	<b>\$59,678</b>	
<b>Expenditures</b>					
1000 Instruction					
2000 Support Services			327,421	220,142	
3000 Operation of Non-Instructional Services					
4000 Facilities Acquisition, Construction and Improvement Services					
5110 Debt Service				14,241	
5130 Refund of Prior Year Revenues / Receipts					
<b>Total Expenditures</b>			<b>\$327,421</b>	<b>\$234,383</b>	
<b>Excess (Deficiency) Of Revenues Over Expenditures</b>			<b>\$35,837</b>	<b>(\$174,705)</b>	
<b>Other Financing Sources (Uses)</b>					
9110 Face Value of Bonds Issued			29,350,000		
9120 Proceeds from Refunding of Bonds				23,250,000	
9130 Bond Premiums			772,371	2,976,267	
9200 Proceeds from Extended-Term Financing					
9300 Interfund Transfers - IN					
9400 Sale of or Compensation for Loss of Fixed Assets					
9710 Transfers from Component Units					
9720 Transfers from Primary Governments					
9910 Other Financing Sources Not Listed in the 9000 Series					
9990 Insurance Recoveries					
5120 Debt Service – Refunded Bonds				25,991,884	
5150 Bond Discounts					
5200 Interfund Transfers – Out					
5300 Transfers Out to Component Units/Primary Governments					
<b>Total Other Financing Sources (Uses)</b>			<b>\$30,122,371</b>	<b>\$234,383</b>	

Amounts Expressed in Whole Dollars	<u>Total Governmental Funds</u>
<b>Revenues</b>	
6000 Revenue from Local Sources	47,490,870
7000 Revenue from State Sources	210,694,894
8000 Revenue from Federal Sources	19,000,221
<b>Total Revenues</b>	<b>\$277,185,985</b>
<b>Expenditures</b>	
1000 Instruction	167,855,865
2000 Support Services	79,132,513
3000 Operation of Non-Instructional Services	3,348,923
4000 Facilities Acquisition, Construction and Improvement Services	5,135,247
5110 Debt Service	24,306,662
5130 Refund of Prior Year Revenues / Receipts	224,658
<b>Total Expenditures</b>	<b>\$280,003,868</b>
<b>Excess (Deficiency) Of Revenues Over Expenditures</b>	<b>(\$2,817,883)</b>
<b>Other Financing Sources (Uses)</b>	
9110 Face Value of Bonds Issued	29,350,000
9120 Proceeds from Refunding of Bonds	23,250,000
9130 Bond Premiums	3,748,638
9200 Proceeds from Extended-Term Financing	
9300 Interfund Transfers - IN	601,467
9400 Sale of or Compensation for Loss of Fixed Assets	301,676
9710 Transfers from Component Units	
9720 Transfers from Primary Governments	
9910 Other Financing Sources Not Listed in the 9000 Series	
9990 Insurance Recoveries	25,366
5120 Debt Service – Refunded Bonds	25,991,884
5150 Bond Discounts	
5200 Interfund Transfers – Out	
5300 Transfers Out to Component Units/Primary Governments	
<b>Total Other Financing Sources (Uses)</b>	<b>\$31,285,263</b>

Amounts Expressed in Whole Dollars		<u>General Fund</u> <u>(10)</u>	<u>Student Sponsored</u> <u>Activity Fund</u> <u>(21)</u>	<u>Public Purpose Trust</u> <u>(27)</u>	<u>Other Compt Approved</u> <u>(28)</u>	<u>Athletic / Activity</u> <u>(29)</u>
<b>Special And Extraordinary Items</b>						
9920	Special Items – Gains					
9930	Extraordinary Items – Gains					
5520	Special Items – Losses					
5530	Extraordinary Items – Losses					
<b>Net Change In Fund Balances</b>		<b>(\$1,784,504)</b>			<b>\$33,998</b>	
<b>Fund Balance</b>						
0001	Fund Balance - Beginning of Fiscal Year	57,140,372			117,928	
<b>Fund Balance - End Of Year</b>		<b>\$55,355,868</b>			<b>\$151,926</b>	



Amounts Expressed in Whole Dollars		<u>Capital Reserve (690.</u> <u>1850)</u> <u>(31)</u>	<u>Capital Reserve (1431)</u> <u>(32)</u>	<u>Other Capital Projects</u> <u>Fund</u> <u>(39)</u>	<u>Debt Service</u> <u>(40)</u>	<u>Permanent</u> <u>(90)</u>
<b>Special And Extraordinary Items</b>						
9920	Special Items – Gains					
9930	Extraordinary Items – Gains					
5520	Special Items – Losses					
5530	Extraordinary Items – Losses					
<b>Net Change In Fund Balances</b>				<b>\$30,158,208</b>	<b>\$59,678</b>	
<b>Fund Balance</b>						
0001	Fund Balance - Beginning of Fiscal Year			15,640,428	5,000,000	
<b>Fund Balance - End Of Year</b>				<b>\$45,798,636</b>	<b>\$5,059,678</b>	

Amounts Expressed in Whole Dollars		<u>Total Governmental</u> <u>Funds</u>
<b>Special And Extraordinary Items</b>		
9920	Special Items – Gains	
9930	Extraordinary Items – Gains	
5520	Special Items – Losses	
5530	Extraordinary Items – Losses	
<b>Net Change In Fund Balances</b>		<b>\$28,467,380</b>
<b>Fund Balance</b>		
0001	Fund Balance - Beginning of Fiscal Year	77,898,728
<b>Fund Balance - End Of Year</b>		<b>\$106,366,108</b>

LEA : 114067002      Reading SD

Printed 1/7/2021 9:12:06 AM

Amounts Expressed in Whole Dollars	Food Service (51)	Child Care Operations (52)	Other Enterprise (58)	TOTAL	Internal Service (60)
<b>Assets And Deferred Outflows Of Resources</b>					
<b>Current Assets</b>					
0100 Cash and Cash Equivalents	6,149,388			6,149,388	
0110 Investments					
0130 Due From Other Funds	1,039,863			1,039,863	
0141 Due From Other Governments					
0142 State Revenue Receivable	208,910			208,910	
0143 Federal Revenue Receivable					
0146 Due from Primary Government					
0147 Due from Component Unit					
0150 Other Receivables	8,811			8,811	
0170 Inventories	287,789			287,789	
0180 Prepaid Expenses (Expenditures)					
0190 Other Current Assets					
<b>Total Current Assets</b>	<b>\$7,694,761</b>			<b>\$7,694,761</b>	
<b>Noncurrent Assets</b>					
0211 Land					
0212 Site Improvements (Net)					
0220 Buildings and Building Improvements (Net)					
0230 Machinery, Equipment and Furniture (Net)	1,378,498			1,378,498	
0250 Construction in Progress					
0260 Long Term Prepayments					
0290 Other Noncurrent Assets					
<b>Total Noncurrent Assets</b>	<b>\$1,378,498</b>			<b>\$1,378,498</b>	
0910 Deferred Outflows of Resources					
<b>Total Assets And Deferred Outflows Of Resources</b>	<b>\$9,073,259</b>			<b>\$9,073,259</b>	

LEA : 114067002      Reading SD

Printed 1/7/2021 9:12:06 AM

Amounts Expressed in Whole Dollars	Food Service (51)	Child Care Operations (52)	Other Enterprise (58)	TOTAL	Internal Service (60)
<b>Liabilities And Deferred Inflows Of Resources And Net Position</b>					
<b>Current Liabilities</b>					
0400 Due to Other Funds	7,741,299			7,741,299	
0411 Due to Other Governments					
0413 Due to Component Unit					
0420 Accounts Payable	319,309			319,309	
0430 Contracts Payable					
0440 Current Portion of Long-Term Debt					
0450 Short-Term Payables					
0461 Accrued Salaries and Benefits					
0462 Payroll Deductions and Withholding					
0480 Unearned Revenues					
0490 Other Current Liabilities	(174)			(174)	
<b>Total Current Liabilities</b>	<b>\$8,060,434</b>			<b>\$8,060,434</b>	
<b>Noncurrent Liabilities</b>					
0510 Bonds Payable					
0520 Extended-Term Financing Agreements Payable					
0530 Lease-Purchase Obligations					
0540 Accumulated Compensated Absences	33,820			33,820	
0550 Authority Lease Obligations					
0560 Other Post-Employment Benefits (OPEB)	6,055,064			6,055,064	
0570 Net Pension Liability					
0599 Other Noncurrent Liabilities	10,934,000			10,934,000	
<b>Total Noncurrent Liabilities</b>	<b>\$17,022,884</b>			<b>\$17,022,884</b>	
<b>Total Liabilities</b>	<b>\$25,083,318</b>			<b>\$25,083,318</b>	
0950 Deferred Inflows of Resources	(998,024)			(998,024)	
<b>Net Position</b>					
0791 Net Investment in Capital Assets					
0008 Restricted Net Position (0792 – 0798)					
0799 Unrestricted Net Position	(15,012,035)			(15,012,035)	
<b>Total Net Position</b>	<b>(\$15,012,035)</b>			<b>(\$15,012,035)</b>	
<b>Total Liabilities And Deferred Inflows Of Resources And Net Position</b>	<b>\$9,073,259</b>			<b>\$9,073,259</b>	

Amounts Expressed in Whole Dollars	<u>Food Service</u> <u>(51)</u>	<u>Child Care Operations</u> <u>(52)</u>	<u>Other Enterprise</u> <u>(58)</u>	<u>TOTAL</u>	<u>Internal Service</u> <u>(60)</u>
<b>Operating Revenues</b>					
6600 Food Service Revenue	78,848			78,848	
0071 Charges for Services					
0072 Other Operating Revenue					
<b>Total Operating Revenues</b>	<b>\$78,848</b>			<b>\$78,848</b>	
<b>Operating Expenses</b>					
100 Personnel Services – Salaries	3,546,992			3,546,992	
200 Personnel Services – Employee Benefits	2,259,932			2,259,932	
300 Purchased Professional and Technical Services					
400 Purchased Property Services	102,239			102,239	
500 Other Purchased Services	219,849			219,849	
600 Supplies	5,899,011			5,899,011	
740 Depreciation					
810 Dues and Fees	1,308			1,308	
890 Miscellaneous Expenditures					
<b>Total Operating Expenses</b>	<b>\$12,029,331</b>			<b>\$12,029,331</b>	
<b>Operating Income (Loss)</b>	<b>(\$11,950,483)</b>			<b>(\$11,950,483)</b>	
<b>Non Operating Revenues (Expenses)</b>					
6500 Earnings on Investments					
6920 Contributions and Donations from Private Sources					
6930 Gains or Losses on Sale of Fixed Assets					
6991 Refunds of a Prior Year Expenditure					
7000 Revenue from State Sources	1,330,342			1,330,342	
8000 Revenue from Federal Sources	9,767,869			9,767,869	
9990 Insurance Recoveries					
820 Claims and Judgments Against the LEA					
830 Interest					
<b>TOTAL Non Operating Revenues (Expenses)</b>	<b>\$11,098,211</b>			<b>\$11,098,211</b>	
<b>Income (Loss) Before Contributions And Transfers</b>	<b>(\$852,272)</b>			<b>(\$852,272)</b>	

Amounts Expressed in Whole Dollars	<u>Food Service</u> <u>(51)</u>	<u>Child Care Operations</u> <u>(52)</u>	<u>Other Enterprise</u> <u>(58)</u>	<u>TOTAL</u>	<u>Internal Service</u> <u>(60)</u>
<b>Contributions, Transfers, and Special and Extraordinary Items</b>					
5200 Interfund Transfers – Out	601,467			601,467	
5300 Transfers Out to Component Units/Primary Governments					
5520 Special Items – Losses					
5530 Extraordinary Items – Losses					
9300 Interfund Transfers - IN					
9500 Capital Contributions					
9700 Transfers IN From Component Units/Primary Governments					
9920 Special Items – Gains					
9930 Extraordinary Items – Gains					
<b>Change In Net Position</b>	<b>(\$1,453,739)</b>			<b>(\$1,453,739)</b>	
0002 Net Position - Beginning of Fiscal Year	(13,558,296)			(13,558,296)	
0003 Accounting Changes / Residual Equity Transfers					
<b>Net Position - End Of Year</b>	<b>(\$15,012,035)</b>			<b>(\$15,012,035)</b>	

LEA : 114067002      Reading SD

Printed 1/7/2021 9:12:31 AM

Amounts Expressed in Whole Dollars	<u>Food Service</u> <u>(51)</u>	<u>Child Care Operations</u> <u>(52)</u>	<u>Other Enterprise</u> <u>(58)</u>	<u>TOTAL</u>	<u>Internal Service(60)</u>
<b>Cash Flows From Operating Activities</b>					
0011 Cash Receipts From Users	6,149,388			6,149,388	
0012 Cash Receipts From Assessments Made to Other Funds					
0013 Cash Receipts From Earnings on Investments					
0014 Cash Receipts From Other Operating Revenue					
0015 Cash Payments To Employees For Services					
0016 Cash Payments For Insurance Claims					
0017 Cash Payments To Suppliers For Goods and Services	18,099,871			18,099,871	
0018 Cash Payments For Other Operating Expenses					
<b>Net Cash Provided By (Used For) Operating Activities</b>	<b>(\$11,950,483)</b>			<b>(\$11,950,483)</b>	
<b>Cash Flows From Non-Capital Financing Activities</b>					
0021 Receipts From Local Sources - 6000					
0022 Receipts From State Sources - 7000					
0023 Receipts From Federal Sources -8000	12,000,000			12,000,000	
0024 Notes and Loans Received (Repaid)					
0025 Interest Paid on Notes/Loans - 5100-830					
0026 Operating Transfers In (Out)/Residual Equity Trans					
0027 Operating Transfers In (Out) Primary Government / Comp Unit					
0028 Receipts From Refund of Prior Year Expenditures - 6991					
0029 Special and Extraordinary Gains (losses)					
0030 Receipts from Insurance Recoveries -9990					
<b>Net Cash Prov By (Used for) Non-Capital Financing Activities</b>	<b>\$12,000,000</b>			<b>\$12,000,000</b>	
<b>Cash Flows From Capital and Related Financing Activities</b>					
0031 Payments For Fac Acq, Const, and Imp - 4000					
0032 Gain / (Loss) on Sale of Fixed Assets - 6930					
0033 Proceeds From Extended Term Financing - 9200					
0034 Principal Paid on Financing Agreements					
0035 Interest Paid on Financing Agreements - 5100-830					
0036 (Inc) Dec in Contributed Capital					
<b>Net Cash Prov By (Used for) Capital and Related Financing Activities</b>					
<b>Cash Flows From Investing Activities</b>					
0041 Earnings on Investments - 6500					
0042 Purchase of Inv Securities / Deposits to Inv Pools					
0043 Receipts From Investment Pool Withdrawals					
0044 Proceeds from Sale and Maturity of Inv Securities					

LEA : 114067002      Reading SD

Printed 1/7/2021 9:12:31 AM

0045   Loans Received (Paid)

**Net Cash Prov By (Used for) Investing Activities**



LEA : 114067002      Reading SD

Printed 1/7/2021 9:12:31 AM

	Food Service	Child Care Operations	Other Enterprise	TOTAL	Internal Service
	(51)	(52)	(58)		(60)
Net Increase (Decrease) in Cash Flows	49,517			49,517	
0004 Cash and Cash Equivalents Beginning of Year					
Cash and Cash Equivalents at Year End	\$49,517			\$49,517	
Reconciliation of Operating Income (Loss) To Net Cash Provided by (Used For) Operating Activities					
0005 Operating Income (Loss) per REP	(11,950,483)			(11,950,483)	
Adjustments					
0051 Depreciation and Net Amortization					
0052 Provision for Uncollectible Accounts					
0053 Other Adjustments					
Effect of Changes in Assets, Liabilities, Deferred Outflows and Deferred Inflows					
0054 (Inc) Dec In Accounts Receivable (0120-0150)					
0055 Advances to Other Funds (0160)					
0056 (Inc) Dec in Inventories (0170)					
0057 (Inc) Dec in Prepaid Expenses (0180)					
0058 (Inc) Dec in Other Current or Noncurrent Assets					
0064 Deferred Outflows (0910)					
0059 Inc (Dec) in Accounts Payable (0400-0450)					
0060 Inc (Dec) in Accrued Salaries/Benefits (0461)					
0065 Inc (Dec) in Net Pension Liabilities (0570)					
0066 Inc (Dec) in Other Postemp Benefit Oblig (0560)					
0061 Inc (Dec) in Payroll Deductions/Withholding (0462)					
0062 Inc (Dec) in Unearned Revenue (0480)					
0063 Inc (Dec) in Other Current or Noncurrent Liabilities					
0067 Deferred Inflows (0950)					
Total Adjustments					
Cash Provided By (Used for) Total	(\$11,950,483)			(\$11,950,483)	

COMBINED STATEMENT OF CASH FLOWS  
SCHEDULE OF NONCASH INVESTING, CAPITAL, AND FINANCING ACTIVITIES

Explanation of Transaction and Balance Sheet Effect	Amount
Total	

	Revenue Reported In Current Year	Current Year Tax Accrual	Prior Year Tax Accrual	Taxes Collected In Current Year
<b>Revenue from Local Sources</b>				
6111 Current Real Estate Taxes	19,105,535.53			19,105,535.53
6113 Public Utility Realty Taxes	36,680.36			36,680.36
6114 Payments in Lieu of Current Taxes - State / Local	138,054.88			138,054.88
6120 Current Per Capita Taxes, Section 679	94,087.13			94,087.13
6131 Current Act 1 Earned Income Taxes	11,479,524.51			11,479,524.51
6143 Current Act 511 Local Services Taxes	123,809.67			123,809.67
6145 Current Act 511 Business Privilege Taxes - Flat Rate	716,834.43			716,834.43
6151 Current Act 511 Earned Income Taxes	5,739,762.21			5,739,762.21
6153 Current Act 511 Real Estate Transfer Taxes	783,669.11			783,669.11
6411 Delinquent Real Estate Taxes	2,703,266.92			2,703,266.92
6420 Delinquent Per Capita Taxes, Section 679	110,081.08			110,081.08
6440 Delinquent Local Enabling Taxes - Flat Rate Assessments	238,469.07			238,469.07
6500 Earnings on Investments	985,006.33			
6700 Revenues from LEA Activities	120,105.30			
6829 State Revenue Received from Other Sources	92,829.00			
6832 Federal IDEA Revenue Received as Pass Through	3,380,343.24			
6910 Rentals	121,459.36			
6920 Contributions and Donations from Private Sources	161,584.50			
6991 Refunds of a Prior Year Expenditure	823,482.61			
6992 Energy Efficiency Revenues and Incentives	4,449.14			
6999 Other Revenues Not Specified Above	1,611.00			
<b>TOTAL Revenue from Local Sources</b>	<b>\$46,960,645.38</b>			<b>\$41,269,774.90</b>

	Revenue Reported In Current Year			
<b>Revenue from State Sources</b>				
7111 Basic Education Funding-Formula	145,029,580.27			
7160 Tuition for Orphans Subsidy	125,175.42			
7271 Special Education funds for School-Aged Pupils	13,153,071.18			
7311 Pupil Transportation Subsidy	1,226,888.40			
7312 Nonpublic and Charter School Pupil Transportation Subsidy	346,382.89			
7320 Rental and Sinking Fund Payments / Building Reimbursement Subsidy	6,622,282.69			
7330 Health Services (Medical, Dental, Nurse, Act 25)	381,947.70			
7340 State Property Tax Reduction Allocation	3,676,980.22			
7505 Ready to Learn Block Grant	4,785,693.00			
7506 PAsmart Grants	22,592.02			
7810 State Share of Social Security and Medicare Taxes	6,152,010.12			
7820 State Share of Retirement Contributions	29,172,290.12			
<b>TOTAL Revenue from State Sources</b>	<b>\$210,694,894.03</b>			

	Revenue Reported In Current Year			
<b><u>Revenue from Federal Sources</u></b>				
8310 Payments for Federally Impacted Areas - P.L. 81-815	39,799.27			
8390 Other Restricted Federal Grants-in-Aid Directly from the Federal Government	153,114.28			
8514 NCLB, Title I - Improving the Academic Achievement of the Disadvantaged	13,481,579.26			
8515 NCLB, Title II - Preparing, Training and Recruiting High Quality Teachers and Principals	1,250,728.72			
8516 NCLB, Title III - Language Instruction for Limited English Proficient and Immigrant Students	1,169,978.59			
8517 NCLB, Title IV - 21st Century Schools	1,218,194.69			
8810 School-Based Access Medicaid Reimbursement Program (SBAP) Reimbursements (Access)	1,522,451.55			
8820 Medical Assistance Reimbursement for Administrative Claiming (Quarterly) Program	164,374.64			
<b>TOTAL Revenue from Federal Sources</b>	<b>\$19,000,221.00</b>			

	Revenue Reported In Current Year			
<b><u>Other Financing Sources</u></b>				
9350 Enterprise Fund Transfers	601,466.56			
9400 Sale of or Compensation for Loss of Fixed Assets	301,675.82			
9990 Insurance Recoveries	25,366.19			
<b>TOTAL Other Financing Sources</b>	<b>\$928,508.57</b>			
<b>TOTAL FROM ALL SOURCES</b>	<b>\$277,584,268.98</b>			<b>\$41,269,774.90</b>

LEA : 114067002      Reading SD

Printed 1/7/2021 9:12:39 AM

	General Fund (10)	Student Sponsored Activity Fund (21)	Public Purpose Trust (27)	Other Compt Approved (28)	Athletic / Activity (29)	Capital Reserve (690, 1850) (31)
<b>6000 Revenue from Local Sources</b>						
6111 Current Real Estate Taxes	19,105,535.53					
6113 Public Utility Realty Taxes	36,680.36					
6114 Payments in Lieu of Current Taxes - State / Local	138,054.88					
6120 Current Per Capita Taxes, Section 679	94,087.13					
6131 Current Act 1 Earned Income Taxes	11,479,524.51					
6143 Current Act 511 Local Services Taxes	123,809.67					
6145 Current Act 511 Business Privilege Taxes - Flat Rate	716,834.43					
6151 Current Act 511 Earned Income Taxes	5,739,762.21					
6153 Current Act 511 Real Estate Transfer Taxes	783,669.11					
6411 Delinquent Real Estate Taxes	2,703,266.92					
6420 Delinquent Per Capita Taxes, Section 679	110,081.08					
6440 Delinquent Local Enabling Taxes - Flat Rate Assessments	238,469.07					
6500 Earnings on Investments	985,006.33			1,923.21		
6700 Revenues from LEA Activities	120,105.30			105,365.91		
6829 State Revenue Received from Other Sources	92,829.00					
6832 Federal IDEA Revenue Received as Pass Through	3,380,343.24					
6910 Rentals	121,459.36					
6920 Contributions and Donations from Private Sources	161,584.50					
6991 Refunds of a Prior Year Expenditure	823,482.61					
6992 Energy Efficiency Revenues and Incentives	4,449.14					
6999 Other Revenues Not Specified Above	1,611.00					
<b>6000 Total Revenue from Local Sources</b>	<b>\$46,960,645.38</b>			<b>\$107,289.12</b>		
<b>7000 Revenue from State Sources</b>						
7111 Basic Education Funding-Formula	145,029,580.27					
7160 Tuition for Orphans Subsidy	125,175.42					
7271 Special Education funds for School-Aged Pupils	13,153,071.18					
7311 Pupil Transportation Subsidy	1,226,888.40					
7312 Nonpublic and Charter School Pupil Transportation Subsidy	346,382.89					
7320 Rental and Sinking Fund Payments / Building Reimbursement Subsidy	6,622,282.69					
7330 Health Services (Medical, Dental, Nurse, Act 25)	381,947.70					
7340 State Property Tax Reduction Allocation	3,676,980.22					
7505 Ready to Learn Block Grant	4,785,693.00					
7506 PAsmart Grants	22,592.02					
7810 State Share of Social Security and Medicare Taxes	6,152,010.12					

LEA : 114067002      Reading SD

Printed 1/7/2021 9:12:39 AM

	Capital Reserve (1431) (32)	Other Capital Projects Fund (39)	Debt Service (40)	Permanent (90)	Total
<b>6000 Revenue from Local Sources</b>					
6111 Current Real Estate Taxes					19,105,535.53
6113 Public Utility Realty Taxes					36,680.36
6114 Payments in Lieu of Current Taxes - State / Local					138,054.88
6120 Current Per Capita Taxes, Section 679					94,087.13
6131 Current Act 1 Earned Income Taxes					11,479,524.51
6143 Current Act 511 Local Services Taxes					123,809.67
6145 Current Act 511 Business Privilege Taxes - Flat Rate					716,834.43
6151 Current Act 511 Earned Income Taxes					5,739,762.21
6153 Current Act 511 Real Estate Transfer Taxes					783,669.11
6411 Delinquent Real Estate Taxes					2,703,266.92
6420 Delinquent Per Capita Taxes, Section 679					110,081.08
6440 Delinquent Local Enabling Taxes - Flat Rate Assessments					238,469.07
6500 Earnings on Investments		363,258.00	59,678.26		1,409,865.80
6700 Revenues from LEA Activities					225,471.21
6829 State Revenue Received from Other Sources					92,829.00
6832 Federal IDEA Revenue Received as Pass Through					3,380,343.24
6910 Rentals					121,459.36
6920 Contributions and Donations from Private Sources					161,584.50
6991 Refunds of a Prior Year Expenditure					823,482.61
6992 Energy Efficiency Revenues and Incentives					4,449.14
6999 Other Revenues Not Specified Above					1,611.00
<b>6000 Total Revenue from Local Sources</b>		<b>\$363,258.00</b>	<b>\$59,678.26</b>		<b>\$47,490,870.76</b>
<b>7000 Revenue from State Sources</b>					
7111 Basic Education Funding-Formula					145,029,580.27
7160 Tuition for Orphans Subsidy					125,175.42
7271 Special Education funds for School-Aged Pupils					13,153,071.18
7311 Pupil Transportation Subsidy					1,226,888.40
7312 Nonpublic and Charter School Pupil Transportation Subsidy					346,382.89
7320 Rental and Sinking Fund Payments / Building Reimbursement Subsidy					6,622,282.69
7330 Health Services (Medical, Dental, Nurse, Act 25)					381,947.70
7340 State Property Tax Reduction Allocation					3,676,980.22
7505 Ready to Learn Block Grant					4,785,693.00
7506 PAsmart Grants					22,592.02
7810 State Share of Social Security and Medicare Taxes					6,152,010.12



LEA : 114067002      Reading SD

Printed 1/7/2021 9:12:39 AM

	<u>General Fund (10)</u>	<u>Student Sponsored Activity Fund (21)</u>	<u>Public Purpose Trust (27)</u>	<u>Other Compt Approved (28)</u>	<u>Athletic / Activity (29)</u>	<u>Capital Reserve (690, 1850) (31)</u>
<b>7000 Revenue from State Sources</b>						
7820 State Share of Retirement Contributions	29,172,290.12					
<b>7000 Total Revenue from State Sources</b>	<b>\$210,694,894.03</b>					
<b>8000 Revenue from Federal Sources</b>						
8310 Payments for Federally Impacted Areas - P.L. 81-815	39,799.27					
8390 Other Restricted Federal Grants-in-Aid Directly from the Federal Government	153,114.28					
8514 NCLB, Title I - Improving the Academic Achievement of the Disadvantaged	13,481,579.26					
8515 NCLB, Title II - Preparing, Training and Recruiting High Quality Teachers and Principals	1,250,728.72					
8516 NCLB, Title III - Language Instruction for Limited English Proficient and Immigrant Students	1,169,978.59					
8517 NCLB, Title IV - 21St Century Schools	1,218,194.69					
8810 School-Based Access Medicaid Reimbursement Program (SBAP) Reimbursements (Access)	1,522,451.55					
8820 Medical Assistance Reimbursement for Administrative Claiming (Quarterly) Program	164,374.64					
<b>8000 Total Revenue from Federal Sources</b>	<b>\$19,000,221.00</b>					
<b>9000 Other Financing Sources</b>						
9110 Face Value of Bonds Issued						
9120 Proceeds from Refunding of Bonds						
9130 Bond Premiums						
9350 Enterprise Fund Transfers	601,466.56					
9400 Sale of or Compensation for Loss of Fixed Assets	301,675.82					
9990 Insurance Recoveries	25,366.19					
<b>9000 Total Other Financing Sources</b>	<b>\$928,508.57</b>					
<b>Total From All Sources</b>	<b>\$277,584,268.98</b>			<b>\$107,289.12</b>		

LEA : 114067002      Reading SD

Printed 1/7/2021 9:12:39 AM

	Capital Reserve (1431) (32)	Other Capital Projects Fund (39)	Debt Service (40)	Permanent (90)	Total
<b>7000 Revenue from State Sources</b>					
7820 State Share of Retirement Contributions					29,172,290.12
<b>7000 Total Revenue from State Sources</b>					<b>\$210,694,894.03</b>
<b>8000 Revenue from Federal Sources</b>					
8310 Payments for Federally Impacted Areas - P.L. 81-815					39,799.27
8390 Other Restricted Federal Grants-in-Aid Directly from the Federal Government					153,114.28
8514 NCLB, Title I - Improving the Academic Achievement of the Disadvantaged					13,481,579.26
8515 NCLB, Title II - Preparing, Training and Recruiting High Quality Teachers and Principals					1,250,728.72
8516 NCLB, Title III - Language Instruction for Limited English Proficient and Immigrant Students					1,169,978.59
8517 NCLB, Title IV - 21st Century Schools					1,218,194.69
8810 School-Based Access Medicaid Reimbursement Program (SBAP) Reimbursements (Access)					1,522,451.55
8820 Medical Assistance Reimbursement for Administrative Claiming (Quarterly) Program					164,374.64
<b>8000 Total Revenue from Federal Sources</b>					<b>\$19,000,221.00</b>
<b>9000 Other Financing Sources</b>					
9110 Face Value of Bonds Issued	29,350,000.00				29,350,000.00
9120 Proceeds from Refunding of Bonds			23,250,000.00		23,250,000.00
9130 Bond Premiums	772,370.80		2,976,267.05		3,748,637.85
9350 Enterprise Fund Transfers					601,466.56
9400 Sale of or Compensation for Loss of Fixed Assets					301,675.82
9990 Insurance Recoveries					25,366.19
<b>9000 Total Other Financing Sources</b>	<b>\$30,122,370.80</b>		<b>\$26,226,267.05</b>		<b>\$57,277,146.42</b>
<b>Total From All Sources</b>	<b>\$30,485,628.80</b>		<b>\$26,285,945.31</b>		<b>\$334,463,132.21</b>

	<u>General Fund (10)</u>	<u>Student Sponsored Activity Fund (21)</u>	<u>Public Purpose Trust (27)</u>	<u>Other Compt Approved (28)</u>	<u>Athletic / Activity (29)</u>	<u>Capital Reserve (690.1850) (31)</u>
Revenue from Local Sources	46,960,645.38			107,289.12		
Revenue from State Sources	210,694,894.03					
Revenue from Federal Sources	19,000,221.00					
Other Financing Sources	928,508.57					
Total From All Sources	\$277,584,268.98			\$107,289.12		

	<u>Capital Reserve (1431)</u> <u>(32)</u>	<u>Other Capital Projects</u> <u>Fund (39)</u>	<u>Debt Service (40)</u>	<u>Permanent (90)</u>	<u>Total</u>
Revenue from Local Sources		363,258.00	59,678.26		47,490,870.76
Revenue from State Sources					210,694,894.03
Revenue from Federal Sources					19,000,221.00
Other Financing Sources		30,122,370.80	26,226,267.05		57,277,146.42
Total From All Sources		\$30,485,628.80	\$26,285,945.31		\$334,463,132.21

LEA : 114067002      Reading SD

Printed 1/7/2021 9:12:47 AM

General Fund (10)

		Total
<b>1000 Instruction</b>		
<b>100 <u>Personnel Services – Salaries</u></b>		
100 Personnel Services – Salaries		71,743,401.95
<b>Total Personnel Services – Salaries</b>		<b>\$71,743,401.95</b>
<b>200 <u>Personnel Services – Employee Benefits</u></b>		
210 Group Insurance – Contracted Provider		15,615,361.52
220 Social Security Contributions		5,386,535.50
230 PSERS Retirement Contributions		24,650,642.83
250 Unemployment Compensation		74,967.62
260 Workers' Compensation		796,616.69
299 All Other Employee Benefits		(121,701.83)
<b>Total Personnel Services – Employee Benefits</b>		<b>\$46,402,422.33</b>
<b>300 <u>Purchased Professional and Technical Services</u></b>		
322 Professional Educational Services – Ius		8,116,955.71
323 Professional Educational Services – Other Educational Agencies		13,500.00
329 Professional Educational Services – Other		3,643,325.64
330 Other Professional Services		2,544,564.43
390 Other Purchased Professional and Technical Services		963.00
<b>Total Purchased Professional and Technical Services</b>		<b>\$14,319,308.78</b>
<b>400 <u>Purchased Property Services</u></b>		
430 Repairs and Maintenance Services		30,291.42
<b>Total Purchased Property Services</b>		<b>\$30,291.42</b>
<b>500 <u>Other Purchased Services</u></b>		
510 Student Transportation Services		397,862.41
550 Printing and Binding		641.00
561 Tuition To Other School Districts Within the State		934,718.96
562 Tuition To Pennsylvania Charter Schools		12,245,525.77
563 Tuition To Nonpublic Schools		8,918,761.72
564 Tuition To Career and Technology Centers		5,487,254.11
566 Tuition To Institutions of Higher Education and Technical Institutes		38,529.00
567 Tuition To Approved Private Schools (APS) and PA Chartered Schools for the Deaf and Blind		429,852.47
568 Tuition To Private Residential Rehabilitative Institutions (PRRI) [In-State] and Detention Centers		465,794.76
580 Travel		151,751.55
594 IU Payment By Withholding for Institutionalized Children's Programs – Special Classes		13,820.72
599 Other Miscellaneous Purchased Services		31,483.31
<b>Total Other Purchased Services</b>		<b>\$29,115,995.78</b>
<b>600 <u>Supplies</u></b>		
610 General Supplies		3,766,801.59
630 Food		45,874.97
640 Books and Periodicals		1,096,800.84
650 Supplies & Fees – Technology Related		1,177,585.12
<b>Total Supplies</b>		<b>\$6,087,062.52</b>
<b>700 <u>Property</u></b>		
752 Capital Equipment – Original and Additional		58,799.53

LEA : 114067002     Reading SD

Printed 1/7/2021 9:12:47 AM

General Fund (10)

1000 Instruction		<u>Total</u>
Total Property		\$58,799.53
800 <u>Other Objects</u>		
810 Dues and Fees		97,533.43
890 Miscellaneous Expenditures		1,049.00
Total Other Objects		\$98,582.43
Total 1000 Instruction		\$167,855,864.74

LEA : 114067002      Reading SD

Printed 1/7/2021 9:12:47 AM

General Fund (10)

1100 Regular Programs – Elementary / Secondary	Elementary	Secondary	Federal	Total
<b>100 Personnel Services – Salaries</b>				
100 Personnel Services – Salaries	26,107,472.14	22,517,333.08	6,667,935.56	55,292,740.78
<b>Total Personnel Services – Salaries</b>	<b>\$26,107,472.14</b>	<b>\$22,517,333.08</b>	<b>\$6,667,935.56</b>	<b>\$55,292,740.78</b>
<b>200 Personnel Services – Employee Benefits</b>				
210 Group Insurance – Contracted Provider	5,660,341.80	4,356,139.53	1,600,604.38	11,617,085.71
220 Social Security Contributions	1,970,860.08	1,694,326.44	496,098.95	4,161,285.47
230 PSERS Retirement Contributions	9,023,026.82	7,749,478.85	2,277,027.02	19,049,532.69
250 Unemployment Compensation	32,179.06	20,066.39		52,245.45
260 Workers' Compensation	291,761.15	250,632.99	73,259.47	615,653.61
299 All Other Employee Benefits	(77,400.84)	(44,300.99)		(121,701.83)
<b>Total Personnel Services – Employee Benefits</b>	<b>\$16,900,768.07</b>	<b>\$14,026,343.21</b>	<b>\$4,446,989.82</b>	<b>\$35,374,101.10</b>
<b>300 Purchased Professional and Technical Services</b>				
322 Professional Educational Services – Ius	14,499.00	15,018.54		29,517.54
323 Professional Educational Services – Other Educational Agencies	13,500.00			13,500.00
329 Professional Educational Services – Other	1,195,847.97	1,199,091.55	198,812.00	2,593,751.52
390 Other Purchased Professional and Technical Services	963.00			963.00
<b>Total Purchased Professional and Technical Services</b>	<b>\$1,224,809.97</b>	<b>\$1,214,110.09</b>	<b>\$198,812.00</b>	<b>\$2,637,732.06</b>
<b>400 Purchased Property Services</b>				
430 Repairs and Maintenance Services	12,654.97	17,636.45		30,291.42
<b>Total Purchased Property Services</b>	<b>\$12,654.97</b>	<b>\$17,636.45</b>		<b>\$30,291.42</b>
<b>500 Other Purchased Services</b>				
510 Student Transportation Services	4,166.05	30,719.72	16,422.40	51,308.17
550 Printing and Binding	83.00	558.00		641.00
561 Tuition To Other School Districts Within the State		247,663.90		247,663.90
562 Tuition To Pennsylvania Charter Schools	791,634.62	5,118,131.91		5,909,766.53
568 Tuition To Private Residential Rehabilitative Institutions (PRRI) [In-State] and Detention Centers	232,897.38	232,897.38		465,794.76
580 Travel	966.56	2,019.19		2,985.75
599 Other Miscellaneous Purchased Services		31,483.31		31,483.31
<b>Total Other Purchased Services</b>	<b>\$1,029,747.61</b>	<b>\$5,663,473.41</b>	<b>\$16,422.40</b>	<b>\$6,709,643.42</b>
<b>600 Supplies</b>				
610 General Supplies	2,434,066.64	576,599.62	679,740.56	3,690,406.82
630 Food	880.53	1,216.70	3,831.50	5,928.73
640 Books and Periodicals	410,604.56	71,470.68	330,706.20	812,781.44
650 Supplies & Fees – Technology Related	170,423.04	226,785.03	737,217.05	1,134,425.12
<b>Total Supplies</b>	<b>\$3,015,974.77</b>	<b>\$876,072.03</b>	<b>\$1,751,495.31</b>	<b>\$5,643,542.11</b>
<b>700 Property</b>				
752 Capital Equipment – Original and Additional		58,799.53		58,799.53
<b>Total Property</b>		<b>\$58,799.53</b>		<b>\$58,799.53</b>
<b>800 Other Objects</b>				
890 Miscellaneous Expenditures			378.00	378.00
<b>Total Other Objects</b>			<b>\$378.00</b>	<b>\$378.00</b>
<b>Total 1100 Regular Programs – Elementary / Secondary</b>	<b>\$48,291,427.53</b>	<b>\$44,373,767.80</b>	<b>\$13,082,033.09</b>	<b>\$105,747,228.42</b>

LEA : 114067002      Reading SD

Printed 1/7/2021 9:12:47 AM

General Fund (10)

1110 Regular Programs

	Elementary	Secondary	Federal	Total
<b>100 <u>Personnel Services – Salaries</u></b>				
100 Personnel Services – Salaries	26,107,472.14	22,517,333.08		48,624,805.22
<b>Total Personnel Services – Salaries</b>	<b>\$26,107,472.14</b>	<b>\$22,517,333.08</b>		<b>\$48,624,805.22</b>
<b>200 <u>Personnel Services – Employee Benefits</u></b>				
210 Group Insurance – Contracted Provider	5,660,341.80	4,356,139.53		10,016,481.33
220 Social Security Contributions	1,970,860.08	1,694,326.44		3,665,186.52
230 PSERS Retirement Contributions	9,023,026.82	7,749,478.85		16,772,505.67
250 Unemployment Compensation	32,179.06	20,066.39		52,245.45
260 Workers' Compensation	291,761.15	250,632.99		542,394.14
299 All Other Employee Benefits	(77,400.84)	(44,300.99)		(121,701.83)
<b>Total Personnel Services – Employee Benefits</b>	<b>\$16,900,768.07</b>	<b>\$14,026,343.21</b>		<b>\$30,927,111.28</b>
<b>300 <u>Purchased Professional and Technical Services</u></b>				
322 Professional Educational Services – Ius	14,499.00	15,018.54		29,517.54
323 Professional Educational Services – Other Educational Agencies	13,500.00			13,500.00
329 Professional Educational Services – Other	1,195,847.97	1,199,091.55		2,394,939.52
390 Other Purchased Professional and Technical Services	963.00			963.00
<b>Total Purchased Professional and Technical Services</b>	<b>\$1,224,809.97</b>	<b>\$1,214,110.09</b>		<b>\$2,438,920.06</b>
<b>400 <u>Purchased Property Services</u></b>				
430 Repairs and Maintenance Services	12,654.97	17,636.45		30,291.42
<b>Total Purchased Property Services</b>	<b>\$12,654.97</b>	<b>\$17,636.45</b>		<b>\$30,291.42</b>
<b>500 <u>Other Purchased Services</u></b>				
510 Student Transportation Services	4,166.05	30,719.72		34,885.77
550 Printing and Binding	83.00	558.00		641.00
561 Tuition To Other School Districts Within the State		247,663.90		247,663.90
562 Tuition To Pennsylvania Charter Schools	791,634.62	5,118,131.91		5,909,766.53
568 Tuition To Private Residential Rehabilitative Institutions (PRRI) [In-State] and Detention Centers	232,897.38	232,897.38		465,794.76
580 Travel	966.56	2,019.19		2,985.75
599 Other Miscellaneous Purchased Services		31,483.31		31,483.31
<b>Total Other Purchased Services</b>	<b>\$1,029,747.61</b>	<b>\$5,663,473.41</b>		<b>\$6,693,221.02</b>
<b>600 <u>Supplies</u></b>				
610 General Supplies	2,434,066.64	576,599.62		3,010,666.26
630 Food	880.53	1,216.70		2,097.23
640 Books and Periodicals	410,604.56	71,470.68		482,075.24
650 Supplies & Fees – Technology Related	170,423.04	226,785.03		397,208.07
<b>Total Supplies</b>	<b>\$3,015,974.77</b>	<b>\$876,072.03</b>		<b>\$3,892,046.80</b>
<b>700 <u>Property</u></b>				
752 Capital Equipment – Original and Additional		58,799.53		58,799.53
<b>Total Property</b>		<b>\$58,799.53</b>		<b>\$58,799.53</b>
<b>Total 1110 Regular Programs</b>	<b>\$48,291,427.53</b>	<b>\$44,373,767.80</b>		<b>\$92,665,195.33</b>



LEA : 114067002      Reading SD

Printed 1/7/2021 9:12:47 AM

General Fund (10)				
1190 Federally-Funded Regular Programs	<u>Elementary</u>	<u>Secondary</u>	<u>Federal</u>	<u>Total</u>
100 <u>Personnel Services – Salaries</u>				
100 Personnel Services – Salaries			6,667,935.56	6,667,935.56
Total Personnel Services – Salaries			\$6,667,935.56	\$6,667,935.56
200 <u>Personnel Services – Employee Benefits</u>				
210 Group Insurance – Contracted Provider			1,600,604.38	1,600,604.38
220 Social Security Contributions			496,098.95	496,098.95
230 PSERS Retirement Contributions			2,277,027.02	2,277,027.02
260 Workers' Compensation			73,259.47	73,259.47
Total Personnel Services – Employee Benefits			\$4,446,989.82	\$4,446,989.82
300 <u>Purchased Professional and Technical Services</u>				
329 Professional Educational Services – Other			198,812.00	198,812.00
Total Purchased Professional and Technical Services			\$198,812.00	\$198,812.00
500 <u>Other Purchased Services</u>				
510 Student Transportation Services			16,422.40	16,422.40
Total Other Purchased Services			\$16,422.40	\$16,422.40
600 <u>Supplies</u>				
610 General Supplies			679,740.56	679,740.56
630 Food			3,831.50	3,831.50
640 Books and Periodicals			330,706.20	330,706.20
650 Supplies & Fees – Technology Related			737,217.05	737,217.05
Total Supplies			\$1,751,495.31	\$1,751,495.31
800 <u>Other Objects</u>				
890 Miscellaneous Expenditures			378.00	378.00
Total Other Objects			\$378.00	\$378.00
Total 1190 Federally-Funded Regular Programs			\$13,082,033.09	\$13,082,033.09

LEA : 114067002      Reading SD

Printed 1/7/2021 9:12:47 AM

General Fund (10)				
1200 Special Programs – Elementary / Secondary	<u>Elementary</u>	<u>Secondary</u>	<u>Federal</u>	<u>Total</u>
100 <u>Personnel Services – Salaries</u>				
100 Personnel Services – Salaries	6,579,060.22	6,602,215.89	2,078,336.01	15,259,612.12
<b>Total Personnel Services – Salaries</b>	<b>\$6,579,060.22</b>	<b>\$6,602,215.89</b>	<b>\$2,078,336.01</b>	<b>\$15,259,612.12</b>
200 <u>Personnel Services – Employee Benefits</u>				
210 Group Insurance – Contracted Provider	1,451,268.64	1,501,688.89	742,898.37	3,695,855.90
220 Social Security Contributions	489,941.50	492,372.18	154,273.97	1,136,587.65
230 PSERS Retirement Contributions	2,427,162.01	2,413,846.54	354,737.02	5,195,745.57
250 Unemployment Compensation	16,734.02	5,853.33	134.82	22,722.17
260 Workers' Compensation	72,373.69	72,622.59	22,864.87	167,861.15
<b>Total Personnel Services – Employee Benefits</b>	<b>\$4,457,479.86</b>	<b>\$4,486,383.53</b>	<b>\$1,274,909.05</b>	<b>\$10,218,772.44</b>
300 <u>Purchased Professional and Technical Services</u>				
322 Professional Educational Services – lus	1,195,790.57	3,565,942.35	10,566.00	4,772,298.92
329 Professional Educational Services – Other	258,469.97	777,559.15		1,036,029.12
330 Other Professional Services	909,171.56	1,635,392.87		2,544,564.43
<b>Total Purchased Professional and Technical Services</b>	<b>\$2,363,432.10</b>	<b>\$5,978,894.37</b>	<b>\$10,566.00</b>	<b>\$8,352,892.47</b>
500 <u>Other Purchased Services</u>				
510 Student Transportation Services	173,087.22	173,467.02		346,554.24
561 Tuition To Other School Districts Within the State	20,466.36	601,434.45		621,900.81
562 Tuition To Pennsylvania Charter Schools	1,072,650.70	5,263,108.54		6,335,759.24
563 Tuition To Nonpublic Schools	2,227,704.88	5,539,171.94	1,101,418.00	8,868,294.82
567 Tuition To Approved Private Schools (APS) and PA Chartered Schools for the Deaf and Blind	183,973.31	245,879.16		429,852.47
580 Travel	6,710.67	142,055.13		148,765.80
594 IU Payment By Withholding for Institutionalized Children's Programs – Special Classes	13,820.72			13,820.72
<b>Total Other Purchased Services</b>	<b>\$3,698,413.86</b>	<b>\$11,965,116.24</b>	<b>\$1,101,418.00</b>	<b>\$16,764,948.10</b>
600 <u>Supplies</u>				
610 General Supplies	37,057.69	34,100.49	1,395.32	72,553.50
630 Food	20,070.30	19,875.94		39,946.24
640 Books and Periodicals	22,029.12	253,980.43		276,009.55
650 Supplies & Fees – Technology Related	21,450.00	21,710.00		43,160.00
<b>Total Supplies</b>	<b>\$100,607.11</b>	<b>\$329,666.86</b>	<b>\$1,395.32</b>	<b>\$431,669.29</b>
800 <u>Other Objects</u>				
890 Miscellaneous Expenditures	300.00			300.00
<b>Total Other Objects</b>	<b>\$300.00</b>			<b>\$300.00</b>
<b>Total 1200 Special Programs – Elementary / Secondary</b>	<b>\$17,199,293.15</b>	<b>\$29,362,276.89</b>	<b>\$4,466,624.38</b>	<b>\$51,028,194.42</b>

LEA : 114067002      Reading SD

Printed 1/7/2021 9:12:47 AM

<b>General Fund (10)</b>				
<b>1210 Life Skills Support</b>	<b><u>Elementary</u></b>	<b><u>Secondary</u></b>	<b><u>Federal</u></b>	<b><u>Total</u></b>
<b>100 <u>Personnel Services – Salaries</u></b>				
100 Personnel Services – Salaries	617,444.65	994,388.05	237,183.24	1,849,015.94
<b>Total Personnel Services – Salaries</b>	<b>\$617,444.65</b>	<b>\$994,388.05</b>	<b>\$237,183.24</b>	<b>\$1,849,015.94</b>
<b>200 <u>Personnel Services – Employee Benefits</u></b>				
210 Group Insurance – Contracted Provider	153,763.87	315,214.12	74,751.06	543,729.05
220 Social Security Contributions	46,020.94	73,680.79	17,677.29	137,379.02
230 PSERS Retirement Contributions	237,945.97	353,615.61	40,547.15	632,108.73
250 Unemployment Compensation	5,284.54			5,284.54
260 Workers' Compensation	6,792.24	10,938.26	2,609.36	20,339.86
<b>Total Personnel Services – Employee Benefits</b>	<b>\$449,807.56</b>	<b>\$753,448.78</b>	<b>\$135,584.86</b>	<b>\$1,338,841.20</b>
<b>300 <u>Purchased Professional and Technical Services</u></b>				
322 Professional Educational Services – lus	52,959.92	136,116.94		189,076.86
329 Professional Educational Services – Other	54,727.74	54,646.49		109,374.23
330 Other Professional Services	117,478.00	153,658.19		271,136.19
<b>Total Purchased Professional and Technical Services</b>	<b>\$225,165.66</b>	<b>\$344,421.62</b>		<b>\$569,587.28</b>
<b>500 <u>Other Purchased Services</u></b>				
561 Tuition To Other School Districts Within the State		11,059.74		11,059.74
563 Tuition To Nonpublic Schools	84,376.00	21,086.37		105,462.37
<b>Total Other Purchased Services</b>	<b>\$84,376.00</b>	<b>\$32,146.11</b>		<b>\$116,522.11</b>
<b>600 <u>Supplies</u></b>				
610 General Supplies	2,095.96	8,453.67		10,549.63
630 Food	292.80	170.55		463.35
640 Books and Periodicals	7,269.15	238,578.13		245,847.28
<b>Total Supplies</b>	<b>\$9,657.91</b>	<b>\$247,202.35</b>		<b>\$256,860.26</b>
<b>Total 1210 Life Skills Support</b>	<b>\$1,386,451.78</b>	<b>\$2,371,606.91</b>	<b>\$372,768.10</b>	<b>\$4,130,826.79</b>

LEA : 114067002      Reading SD

Printed 1/7/2021 9:12:47 AM

General Fund (10)				
1220 Sensory Support	<u>Elementary</u>	<u>Secondary</u>	<u>Federal</u>	<u>Total</u>
100 <u>Personnel Services – Salaries</u>				
100 Personnel Services – Salaries	298,432.83	343,281.48	70,075.66	711,789.97
<b>Total Personnel Services – Salaries</b>	<b>\$298,432.83</b>	<b>\$343,281.48</b>	<b>\$70,075.66</b>	<b>\$711,789.97</b>
200 <u>Personnel Services – Employee Benefits</u>				
210 Group Insurance – Contracted Provider	44,342.72	64,046.76	32,687.05	141,076.53
220 Social Security Contributions	22,453.77	25,718.56	5,145.09	53,317.42
230 PSERS Retirement Contributions	103,806.36	127,095.83	11,961.67	242,863.86
260 Workers' Compensation	3,283.11	3,775.59	770.92	7,829.62
<b>Total Personnel Services – Employee Benefits</b>	<b>\$173,885.96</b>	<b>\$220,636.74</b>	<b>\$50,564.73</b>	<b>\$445,087.43</b>
300 <u>Purchased Professional and Technical Services</u>				
322 Professional Educational Services – Ius	224,225.35	1,395,209.98		1,619,435.33
330 Other Professional Services	417,688.99	487,779.75		905,468.74
<b>Total Purchased Professional and Technical Services</b>	<b>\$641,914.34</b>	<b>\$1,882,989.73</b>		<b>\$2,524,904.07</b>
500 <u>Other Purchased Services</u>				
580 Travel	34.94	34.95		69.89
<b>Total Other Purchased Services</b>	<b>\$34.94</b>	<b>\$34.95</b>		<b>\$69.89</b>
600 <u>Supplies</u>				
610 General Supplies	886.74	1,440.00		2,326.74
<b>Total Supplies</b>	<b>\$886.74</b>	<b>\$1,440.00</b>		<b>\$2,326.74</b>
<b>Total 1220 Sensory Support</b>	<b>\$1,115,154.81</b>	<b>\$2,448,382.90</b>	<b>\$120,640.39</b>	<b>\$3,684,178.10</b>

LEA : 114067002      Reading SD

Printed 1/7/2021 9:12:47 AM

<b>General Fund (10)</b>				
<b>1230 Emotional Support</b>	<b><u>Elementary</u></b>	<b><u>Secondary</u></b>	<b><u>Federal</u></b>	<b><u>Total</u></b>
<b>100 <u>Personnel Services – Salaries</u></b>				
100 Personnel Services – Salaries	1,538,544.86	1,057,292.20	836,355.07	3,432,192.13
<b>Total Personnel Services – Salaries</b>	<b>\$1,538,544.86</b>	<b>\$1,057,292.20</b>	<b>\$836,355.07</b>	<b>\$3,432,192.13</b>
<b>200 <u>Personnel Services – Employee Benefits</u></b>				
210 Group Insurance – Contracted Provider	360,601.26	264,732.18	303,719.57	929,053.01
220 Social Security Contributions	114,809.11	78,861.60	62,100.06	255,770.77
230 PSERS Retirement Contributions	602,717.31	426,509.41	142,822.17	1,172,048.89
250 Unemployment Compensation	2,789.10	1,955.25		4,744.35
260 Workers' Compensation	16,924.04	11,630.12	9,201.71	37,755.87
<b>Total Personnel Services – Employee Benefits</b>	<b>\$1,097,840.82</b>	<b>\$783,688.56</b>	<b>\$517,843.51</b>	<b>\$2,399,372.89</b>
<b>300 <u>Purchased Professional and Technical Services</u></b>				
322 Professional Educational Services – lus	305,220.10	1,336,699.74		1,641,919.84
329 Professional Educational Services – Other	105,527.60	106,107.58		211,635.18
330 Other Professional Services	240,964.03	218,422.22		459,386.25
<b>Total Purchased Professional and Technical Services</b>	<b>\$651,711.73</b>	<b>\$1,661,229.54</b>		<b>\$2,312,941.27</b>
<b>500 <u>Other Purchased Services</u></b>				
510 Student Transportation Services		379.80		379.80
561 Tuition To Other School Districts Within the State	16,416.36	387,621.55		404,037.91
563 Tuition To Nonpublic Schools	2,131,650.75	5,366,045.80	1,101,418.00	8,599,114.55
580 Travel	5,777.78	141,122.22		146,900.00
<b>Total Other Purchased Services</b>	<b>\$2,153,844.89</b>	<b>\$5,895,169.37</b>	<b>\$1,101,418.00</b>	<b>\$9,150,432.26</b>
<b>600 <u>Supplies</u></b>				
610 General Supplies	8,691.92	6,467.46		15,159.38
630 Food	1,060.90	988.79		2,049.69
640 Books and Periodicals	14,538.30	15,402.30		29,940.60
650 Supplies & Fees – Technology Related		260.00		260.00
<b>Total Supplies</b>	<b>\$24,291.12</b>	<b>\$23,118.55</b>		<b>\$47,409.67</b>
<b>Total 1230 Emotional Support</b>	<b>\$5,466,233.42</b>	<b>\$9,420,498.22</b>	<b>\$2,455,616.58</b>	<b>\$17,342,348.22</b>

LEA : 114067002      Reading SD

Printed 1/7/2021 9:12:47 AM

<b>General Fund (10)</b>				
<b>1240 Academic Support</b>	<u>Elementary</u>	<u>Secondary</u>	<u>Federal</u>	<u>Total</u>
<b>100 <u>Personnel Services – Salaries</u></b>				
100 Personnel Services – Salaries	3,918,371.49	3,870,846.97	784,315.86	8,573,534.32
<b>Total Personnel Services – Salaries</b>	<b>\$3,918,371.49</b>	<b>\$3,870,846.97</b>	<b>\$784,315.86</b>	<b>\$8,573,534.32</b>
<b>200 <u>Personnel Services – Employee Benefits</u></b>				
210 Group Insurance – Contracted Provider	810,106.50	776,361.91	280,599.55	1,867,067.96
220 Social Security Contributions	291,405.12	289,038.09	58,164.59	638,607.80
230 PSERS Retirement Contributions	1,402,555.66	1,375,572.14	133,667.63	2,911,795.43
250 Unemployment Compensation	5,695.42	3,675.34	134.82	9,505.58
260 Workers' Compensation	43,105.54	42,577.99	8,628.50	94,312.03
<b>Total Personnel Services – Employee Benefits</b>	<b>\$2,552,868.24</b>	<b>\$2,487,225.47</b>	<b>\$481,195.09</b>	<b>\$5,521,288.80</b>
<b>300 <u>Purchased Professional and Technical Services</u></b>				
322 Professional Educational Services – lus	27,911.21	242,964.69		270,875.90
329 Professional Educational Services – Other	74,356.70	616,315.83		690,672.53
330 Other Professional Services	47,523.43	60,551.07		108,074.50
<b>Total Purchased Professional and Technical Services</b>	<b>\$149,791.34</b>	<b>\$919,831.59</b>		<b>\$1,069,622.93</b>
<b>500 <u>Other Purchased Services</u></b>				
510 Student Transportation Services	173,087.22	173,087.22		346,174.44
561 Tuition To Other School Districts Within the State	4,050.00	181,116.62		185,166.62
563 Tuition To Nonpublic Schools	11,678.13	145,891.77		157,569.90
<b>Total Other Purchased Services</b>	<b>\$188,815.35</b>	<b>\$500,095.61</b>		<b>\$688,910.96</b>
<b>600 <u>Supplies</u></b>				
610 General Supplies	7,605.49	2,444.26	480.43	10,530.18
640 Books and Periodicals	221.67			221.67
650 Supplies & Fees – Technology Related	21,450.00	21,450.00		42,900.00
<b>Total Supplies</b>	<b>\$29,277.16</b>	<b>\$23,894.26</b>	<b>\$480.43</b>	<b>\$53,651.85</b>
<b>800 <u>Other Objects</u></b>				
890 Miscellaneous Expenditures	300.00			300.00
<b>Total Other Objects</b>	<b>\$300.00</b>			<b>\$300.00</b>
<b>Total 1240 Academic Support</b>	<b>\$6,839,423.58</b>	<b>\$7,801,893.90</b>	<b>\$1,265,991.38</b>	<b>\$15,907,308.86</b>

LEA : 114067002      Reading SD

Printed 1/7/2021 9:12:47 AM

General Fund (10)

1241 Learning Support – Public	Elementary	Secondary	Federal	Total
100 <u>Personnel Services – Salaries</u>				
100 Personnel Services – Salaries	3,776,877.36	3,592,892.69	784,315.86	8,154,085.91
<b>Total Personnel Services – Salaries</b>	<b>\$3,776,877.36</b>	<b>\$3,592,892.69</b>	<b>\$784,315.86</b>	<b>\$8,154,085.91</b>
200 <u>Personnel Services – Employee Benefits</u>				
210 Group Insurance – Contracted Provider	782,592.70	720,821.13	280,599.55	1,784,013.38
220 Social Security Contributions	280,812.37	268,240.55	58,164.59	607,217.51
230 PSERS Retirement Contributions	1,354,167.66	1,280,554.95	133,667.63	2,768,390.24
250 Unemployment Compensation	271.40	2,031.02	134.82	2,437.24
260 Workers' Compensation	41,549.22	39,520.37	8,628.50	89,698.09
<b>Total Personnel Services – Employee Benefits</b>	<b>\$2,459,393.35</b>	<b>\$2,311,168.02</b>	<b>\$481,195.09</b>	<b>\$5,251,756.46</b>
300 <u>Purchased Professional and Technical Services</u>				
322 Professional Educational Services – lus	27,911.21	242,964.69		270,875.90
329 Professional Educational Services – Other	74,356.70	616,315.83		690,672.53
330 Other Professional Services	47,523.43	60,551.07		108,074.50
<b>Total Purchased Professional and Technical Services</b>	<b>\$149,791.34</b>	<b>\$919,831.59</b>		<b>\$1,069,622.93</b>
500 <u>Other Purchased Services</u>				
510 Student Transportation Services	173,087.22	173,087.22		346,174.44
561 Tuition To Other School Districts Within the State	4,050.00	176,208.06		180,258.06
563 Tuition To Nonpublic Schools	11,678.13	145,020.77		156,698.90
<b>Total Other Purchased Services</b>	<b>\$188,815.35</b>	<b>\$494,316.05</b>		<b>\$683,131.40</b>
600 <u>Supplies</u>				
610 General Supplies	7,605.49	2,444.26	480.43	10,530.18
640 Books and Periodicals	221.67			221.67
650 Supplies & Fees – Technology Related	21,450.00	21,450.00		42,900.00
<b>Total Supplies</b>	<b>\$29,277.16</b>	<b>\$23,894.26</b>	<b>\$480.43</b>	<b>\$53,651.85</b>
800 <u>Other Objects</u>				
890 Miscellaneous Expenditures	300.00			300.00
<b>Total Other Objects</b>	<b>\$300.00</b>			<b>\$300.00</b>
<b>Total 1241 Learning Support – Public</b>	<b>\$6,604,454.56</b>	<b>\$7,342,102.61</b>	<b>\$1,265,991.38</b>	<b>\$15,212,548.55</b>

LEA : 114067002      Reading SD

Printed 1/7/2021 9:12:47 AM

General Fund (10)

1243 Gifted Support

	<u>Elementary</u>	<u>Secondary</u>	<u>Federal</u>	<u>Total</u>
<b>100 <u>Personnel Services – Salaries</u></b>				
100 Personnel Services – Salaries	141,494.13	277,954.28		419,448.41
<b>Total Personnel Services – Salaries</b>	<b>\$141,494.13</b>	<b>\$277,954.28</b>		<b>\$419,448.41</b>
<b>200 <u>Personnel Services – Employee Benefits</u></b>				
210 Group Insurance – Contracted Provider	27,513.80	55,540.78		83,054.58
220 Social Security Contributions	10,592.75	20,797.54		31,390.29
230 PSERS Retirement Contributions	48,388.00	95,017.19		143,405.19
250 Unemployment Compensation	5,424.02	1,644.32		7,068.34
260 Workers' Compensation	1,556.32	3,057.62		4,613.94
<b>Total Personnel Services – Employee Benefits</b>	<b>\$93,474.89</b>	<b>\$176,057.45</b>		<b>\$269,532.34</b>
<b>500 <u>Other Purchased Services</u></b>				
561 Tuition To Other School Districts Within the State		4,908.56		4,908.56
563 Tuition To Nonpublic Schools		871.00		871.00
<b>Total Other Purchased Services</b>		<b>\$5,779.56</b>		<b>\$5,779.56</b>
<b>Total 1243 Gifted Support</b>	<b>\$234,969.02</b>	<b>\$459,791.29</b>		<b>\$694,760.31</b>



LEA : 114067002      Reading SD

Printed 1/7/2021 9:12:47 AM

General Fund (10)				
1270 Multi-Handicapped Support	<u>Elementary</u>	<u>Secondary</u>	<u>Federal</u>	<u>Total</u>
100 <u>Personnel Services – Salaries</u>				
100 Personnel Services – Salaries	183,004.79	291,503.51	150,406.18	624,914.48
<b>Total Personnel Services – Salaries</b>	<b>\$183,004.79</b>	<b>\$291,503.51</b>	<b>\$150,406.18</b>	<b>\$624,914.48</b>
200 <u>Personnel Services – Employee Benefits</u>				
210 Group Insurance – Contracted Provider	73,678.27	67,035.77	51,141.14	191,855.18
220 Social Security Contributions	13,533.56	21,758.40	11,186.94	46,478.90
230 PSERS Retirement Contributions	72,237.46	115,656.11	25,738.40	213,631.97
250 Unemployment Compensation	2,964.96	222.74		3,187.70
260 Workers' Compensation	2,012.83	3,206.71	1,654.38	6,873.92
<b>Total Personnel Services – Employee Benefits</b>	<b>\$164,427.08</b>	<b>\$207,879.73</b>	<b>\$89,720.86</b>	<b>\$462,027.67</b>
300 <u>Purchased Professional and Technical Services</u>				
322 Professional Educational Services – lus	100,078.61	48,864.62		148,943.23
329 Professional Educational Services – Other	23,857.93	489.25		24,347.18
330 Other Professional Services	23,579.57	71,401.35		94,980.92
<b>Total Purchased Professional and Technical Services</b>	<b>\$147,516.11</b>	<b>\$120,755.22</b>		<b>\$268,271.33</b>
500 <u>Other Purchased Services</u>				
561 Tuition To Other School Districts Within the State		21,636.54		21,636.54
563 Tuition To Nonpublic Schools		6,148.00		6,148.00
<b>Total Other Purchased Services</b>		<b>\$27,784.54</b>		<b>\$27,784.54</b>
600 <u>Supplies</u>				
610 General Supplies	10,449.18	8,043.85		18,493.03
<b>Total Supplies</b>	<b>\$10,449.18</b>	<b>\$8,043.85</b>		<b>\$18,493.03</b>
<b>Total 1270 Multi-Handicapped Support</b>	<b>\$505,397.16</b>	<b>\$655,966.85</b>	<b>\$240,127.04</b>	<b>\$1,401,491.05</b>

LEA : 114067002     Reading SD

Printed 1/7/2021 9:12:47 AM

General Fund (10)

1280 Early Intervention Support

	<u>Elementary</u>	<u>Secondary</u>	<u>Federal</u>	<u>Total</u>
300 <u>Purchased Professional and Technical Services</u>				
322 Professional Educational Services – lus	79,309.00		10,566.00	89,875.00
Total Purchased Professional and Technical Services	\$79,309.00		\$10,566.00	\$89,875.00
Total 1280 Early Intervention Support	\$79,309.00		\$10,566.00	\$89,875.00

LEA : 114067002      Reading SD

Printed 1/7/2021 9:12:47 AM

General Fund (10)				
1290 Special Programs - Other Support	<u>Elementary</u>	<u>Secondary</u>	<u>Federal</u>	<u>Total</u>
100 <u>Personnel Services – Salaries</u>				
100 Personnel Services – Salaries	23,261.60	44,903.68		68,165.28
<b>Total Personnel Services – Salaries</b>	<b>\$23,261.60</b>	<b>\$44,903.68</b>		<b>\$68,165.28</b>
200 <u>Personnel Services – Employee Benefits</u>				
210 Group Insurance – Contracted Provider	8,776.02	14,298.15		23,074.17
220 Social Security Contributions	1,719.00	3,314.74		5,033.74
230 PSERS Retirement Contributions	7,899.25	15,397.44		23,296.69
260 Workers' Compensation	255.93	493.92		749.85
<b>Total Personnel Services – Employee Benefits</b>	<b>\$18,650.20</b>	<b>\$33,504.25</b>		<b>\$52,154.45</b>
300 <u>Purchased Professional and Technical Services</u>				
322 Professional Educational Services – Ius	406,086.38	406,086.38		812,172.76
330 Other Professional Services	61,937.54	643,580.29		705,517.83
<b>Total Purchased Professional and Technical Services</b>	<b>\$468,023.92</b>	<b>\$1,049,666.67</b>		<b>\$1,517,690.59</b>
500 <u>Other Purchased Services</u>				
562 Tuition To Pennsylvania Charter Schools	1,072,650.70	5,263,108.54		6,335,759.24
567 Tuition To Approved Private Schools (APS) and PA Chartered Schools for the Deaf and Blind	183,973.31	245,879.16		429,852.47
580 Travel	897.95	897.96		1,795.91
594 IU Payment By Withholding for Institutionalized Children's Programs – Special Classes	13,820.72			13,820.72
<b>Total Other Purchased Services</b>	<b>\$1,271,342.68</b>	<b>\$5,509,885.66</b>		<b>\$6,781,228.34</b>
600 <u>Supplies</u>				
610 General Supplies	7,328.40	7,251.25	914.89	15,494.54
630 Food	18,716.60	18,716.60		37,433.20
<b>Total Supplies</b>	<b>\$26,045.00</b>	<b>\$25,967.85</b>	<b>\$914.89</b>	<b>\$52,927.74</b>
<b>Total 1290 Special Programs - Other Support</b>	<b>\$1,807,323.40</b>	<b>\$6,663,928.11</b>	<b>\$914.89</b>	<b>\$8,472,166.40</b>

LEA : 114067002     Reading SD

Printed 1/7/2021 9:12:47 AM

General Fund (10)

1300 Vocational Education

500 Other Purchased Services

	<u>Elementary</u>	<u>Secondary</u>	<u>Federal</u>	<u>Total</u>
564 Tuition To Career and Technology Centers		5,487,254.11		5,487,254.11
<b>Total Other Purchased Services</b>		<b>\$5,487,254.11</b>		<b>\$5,487,254.11</b>
<b>Total 1300 Vocational Education</b>		<b>\$5,487,254.11</b>		<b>\$5,487,254.11</b>

LEA : 114067002      Reading SD

Printed 1/7/2021 9:12:47 AM

<b>General Fund (10)</b>				
<b>1400 Other Instructional Programs – Elementary / Secondary</b>	<u><b>Elementary</b></u>	<u><b>Secondary</b></u>	<u><b>Federal</b></u>	<u><b>Total</b></u>
<b>100 <u>Personnel Services – Salaries</u></b>				
100 Personnel Services – Salaries	209.25	20,679.70		20,888.95
<b>Total Personnel Services – Salaries</b>	<b>\$209.25</b>	<b>\$20,679.70</b>		<b>\$20,888.95</b>
<b>200 <u>Personnel Services – Employee Benefits</u></b>				
220 Social Security Contributions	16.00	1,581.04		1,597.04
230 PSERS Retirement Contributions	71.75	6,833.99		6,905.74
260 Workers’ Compensation	2.30	227.51		229.81
<b>Total Personnel Services – Employee Benefits</b>	<b>\$90.05</b>	<b>\$8,642.54</b>		<b>\$8,732.59</b>
<b>300 <u>Purchased Professional and Technical Services</u></b>				
322 Professional Educational Services – Ius		2,714,524.25		2,714,524.25
<b>Total Purchased Professional and Technical Services</b>		<b>\$2,714,524.25</b>		<b>\$2,714,524.25</b>
<b>500 <u>Other Purchased Services</u></b>				
561 Tuition To Other School Districts Within the State		65,154.25		65,154.25
563 Tuition To Nonpublic Schools	181.85	50,285.05		50,466.90
566 Tuition To Institutions of Higher Education and Technical Institutes			38,529.00	38,529.00
<b>Total Other Purchased Services</b>	<b>\$181.85</b>	<b>\$115,439.30</b>	<b>\$38,529.00</b>	<b>\$154,150.15</b>
<b>600 <u>Supplies</u></b>				
640 Books and Periodicals			4,217.50	4,217.50
<b>Total Supplies</b>			<b>\$4,217.50</b>	<b>\$4,217.50</b>
<b>Total 1400 Other Instructional Programs – Elementary / Secondary</b>	<b>\$481.15</b>	<b>\$2,859,285.79</b>	<b>\$42,746.50</b>	<b>\$2,902,513.44</b>

General Fund (10)

1420 Summer School

	<u>Elementary</u>	<u>Secondary</u>	<u>Federal</u>	<u>Total</u>
<b>100 <u>Personnel Services – Salaries</u></b>				
100 Personnel Services – Salaries		702.00		702.00
<b>Total Personnel Services – Salaries</b>		<b>\$702.00</b>		<b>\$702.00</b>
<b>200 <u>Personnel Services – Employee Benefits</u></b>				
220 Social Security Contributions		53.70		53.70
260 Workers’ Compensation		7.72		7.72
<b>Total Personnel Services – Employee Benefits</b>		<b>\$61.42</b>		<b>\$61.42</b>
<b>Total 1420 Summer School</b>		<b>\$763.42</b>		<b>\$763.42</b>

LEA : 114067002      Reading SD

Printed 1/7/2021 9:12:47 AM

General Fund (10)				
1430 Homebound Instruction	<u>Elementary</u>	<u>Secondary</u>	<u>Federal</u>	<u>Total</u>
100 <u>Personnel Services – Salaries</u>				
100 Personnel Services – Salaries	209.25	19,977.70		20,186.95
<b>Total Personnel Services – Salaries</b>	<b>\$209.25</b>	<b>\$19,977.70</b>		<b>\$20,186.95</b>
200 <u>Personnel Services – Employee Benefits</u>				
220 Social Security Contributions	16.00	1,527.34		1,543.34
230 PSERS Retirement Contributions	71.75	6,833.99		6,905.74
260 Workers’ Compensation	2.30	219.79		222.09
<b>Total Personnel Services – Employee Benefits</b>	<b>\$90.05</b>	<b>\$8,581.12</b>		<b>\$8,671.17</b>
500 <u>Other Purchased Services</u>				
563 Tuition To Nonpublic Schools	181.85			181.85
<b>Total Other Purchased Services</b>	<b>\$181.85</b>			<b>\$181.85</b>
<b>Total 1430 Homebound Instruction</b>	<b>\$481.15</b>	<b>\$28,558.82</b>		<b>\$29,039.97</b>

LEA : 114067002     Reading SD

Printed 1/7/2021 9:12:47 AM

General Fund (10)

1440 Alternative Regular Education Programs	<u>Elementary</u>	<u>Secondary</u>	<u>Federal</u>	<u>Total</u>
300 <u>Purchased Professional and Technical Services</u>				
322 Professional Educational Services – lus		2,714,524.25		2,714,524.25
Total Purchased Professional and Technical Services		\$2,714,524.25		\$2,714,524.25
500 <u>Other Purchased Services</u>				
561 Tuition To Other School Districts Within the State		65,154.25		65,154.25
563 Tuition To Nonpublic Schools		50,285.05		50,285.05
Total Other Purchased Services		\$115,439.30		\$115,439.30
Total 1440 Alternative Regular Education Programs		\$2,829,963.55		\$2,829,963.55



LEA : 114067002     Reading SD

Printed 1/7/2021 9:12:47 AM

General Fund (10)

1441 Adjudicated / Court-Placed Programs

	<u>Elementary</u>	<u>Secondary</u>	<u>Federal</u>	<u>Total</u>
<b>300 <u>Purchased Professional and Technical Services</u></b>				
322 Professional Educational Services – Ius		184,514.25		184,514.25
<b>Total Purchased Professional and Technical Services</b>		<b>\$184,514.25</b>		<b>\$184,514.25</b>
<b>500 <u>Other Purchased Services</u></b>				
561 Tuition To Other School Districts Within the State		65,154.25		65,154.25
563 Tuition To Nonpublic Schools		50,285.05		50,285.05
<b>Total Other Purchased Services</b>		<b>\$115,439.30</b>		<b>\$115,439.30</b>
<b>Total 1441 Adjudicated / Court-Placed Programs</b>		<b>\$299,953.55</b>		<b>\$299,953.55</b>

LEA : 114067002     Reading SD

Printed 1/7/2021 9:12:47 AM

General Fund (10)

1442 Alternative Education Programs	<u>Elementary</u>	<u>Secondary</u>	<u>Federal</u>	<u>Total</u>
300 <u>Purchased Professional and Technical Services</u>				
322 Professional Educational Services – lus		2,530,010.00		2,530,010.00
Total Purchased Professional and Technical Services		\$2,530,010.00		\$2,530,010.00
Total 1442 Alternative Education Programs		\$2,530,010.00		\$2,530,010.00

General Fund (10)

1490 Additional Other Instructional Programs	<u>Elementary</u>	<u>Secondary</u>	<u>Federal</u>	<u>Total</u>
500 <u>Other Purchased Services</u>				
566 Tuition To Institutions of Higher Education and Technical Institutes			38,529.00	38,529.00
Total Other Purchased Services			\$38,529.00	\$38,529.00
600 <u>Supplies</u>				
640 Books and Periodicals			4,217.50	4,217.50
Total Supplies			\$4,217.50	\$4,217.50
Total 1490 Additional Other Instructional Programs			\$42,746.50	\$42,746.50

LEA : 114067002      Reading SD

Printed 1/7/2021 9:12:47 AM

General Fund (10)				
1500 Nonpublic School Programs	<u>Elementary</u>	<u>Secondary</u>	<u>Federal</u>	<u>Total</u>
300 <u>Purchased Professional and Technical Services</u>				
322 Professional Educational Services – lus			600,615.00	600,615.00
Total Purchased Professional and Technical Services			\$600,615.00	\$600,615.00
600 <u>Supplies</u>				
610 General Supplies			918.00	918.00
640 Books and Periodicals			2,777.93	2,777.93
Total Supplies			\$3,695.93	\$3,695.93
800 <u>Other Objects</u>				
810 Dues and Fees			97,533.43	97,533.43
Total Other Objects			\$97,533.43	\$97,533.43
Total 1500 Nonpublic School Programs			\$701,844.36	\$701,844.36

LEA : 114067002     Reading SD

Printed 1/7/2021 9:12:47 AM

General Fund (10)

1600 Adult Education Programs	<u>Elementary</u>	<u>Secondary</u>	<u>Federal</u>	<u>Total</u>
300 <u>Purchased Professional and Technical Services</u>				
329 Professional Educational Services – Other				13,545.00
Total Purchased Professional and Technical Services				\$13,545.00
600 <u>Supplies</u>				
610 General Supplies				2,923.27
640 Books and Periodicals				1,014.42
Total Supplies				\$3,937.69
800 <u>Other Objects</u>				
890 Miscellaneous Expenditures				371.00
Total Other Objects				\$371.00
Total 1600 Adult Education Programs				\$17,853.69

LEA : 114067002      Reading SD

Printed 1/7/2021 9:12:47 AM

General Fund (10)

1800 Pre-Kindergarten

Elementary                      Secondary                      Federal                      Total

100 <u>Personnel Services – Salaries</u>				
100 Personnel Services – Salaries				1,170,160.10
<b>Total Personnel Services – Salaries</b>				<b>\$1,170,160.10</b>
200 <u>Personnel Services – Employee Benefits</u>				
210 Group Insurance – Contracted Provider				302,419.91
220 Social Security Contributions				87,065.34
230 PSERS Retirement Contributions				398,458.83
260 Workers' Compensation				12,872.12
<b>Total Personnel Services – Employee Benefits</b>				<b>\$800,816.20</b>
<b>Total 1800 Pre-Kindergarten</b>				<b>\$1,970,976.30</b>

LEA : 114067002     Reading SD

Printed 1/7/2021 9:12:47 AM

General Fund (10)

1801 Pre-K Instruction

Elementary                      Secondary                      Federal                      Total

100 <u>Personnel Services – Salaries</u>				
100 Personnel Services – Salaries				1,170,160.10
<b>Total Personnel Services – Salaries</b>				<b>\$1,170,160.10</b>
200 <u>Personnel Services – Employee Benefits</u>				
210 Group Insurance – Contracted Provider				302,419.91
220 Social Security Contributions				87,065.34
230 PSERS Retirement Contributions				398,458.83
260 Workers' Compensation				12,872.12
<b>Total Personnel Services – Employee Benefits</b>				<b>\$800,816.20</b>
<b>Total 1801 Pre-K Instruction</b>				<b>\$1,970,976.30</b>

LEA : 114067002      Reading SD

Printed 1/7/2021 9:13:00 AM

General Fund (10)

2000 Support Services		Total
100 <u>Personnel Services – Salaries</u>		
100 Personnel Services – Salaries		28,638,903.37
Total Personnel Services – Salaries		\$28,638,903.37
200 <u>Personnel Services – Employee Benefits</u>		
210 Group Insurance – Contracted Provider		6,377,235.66
220 Social Security Contributions		2,143,046.89
230 PSERS Retirement Contributions		9,773,329.69
240 Tuition Reimbursement		322,747.56
250 Unemployment Compensation		205,000.64
260 Workers' Compensation		341,167.00
280 Other Post-Employment Benefits (OPEB)		5,478,647.02
299 All Other Employee Benefits		19,250.22
Total Personnel Services – Employee Benefits		\$24,660,424.68
300 <u>Purchased Professional and Technical Services</u>		
310 Official / Administrative Services		59,699.73
322 Professional Educational Services – Ius		291,788.76
323 Professional Educational Services – Other Educational Agencies		239,500.47
329 Professional Educational Services – Other		282,508.80
330 Other Professional Services		2,652,355.51
340 Technical Services		1,221,262.69
360 Employee Training and Development Services		1,115,792.49
390 Other Purchased Professional and Technical Services		13,624.52
Total Purchased Professional and Technical Services		\$5,876,532.97
400 <u>Purchased Property Services</u>		
410 Cleaning Services		151,185.25
420 Utility Services		745,830.47
430 Repairs and Maintenance Services		1,455,891.44
440 Rentals		424,480.96
460 Extermination Services		26,455.09
Total Purchased Property Services		\$2,803,843.21
500 <u>Other Purchased Services</u>		
511 Student Transportation Services from Another LEA Within the State		262,679.79
513 Contracted Carriers		26,283.86
516 Student Transportation Services From the IU		5,370,585.84
520 Insurance – General		751,506.46
521 Fire Insurance		29,440.00
522 Automotive Liability Insurance		66,750.50
529 Other Insurance		2,838.00
530 Communications		343,298.11
549 Other Advertising/Public Relations		8,085.88
550 Printing and Binding		23,200.43
580 Travel		56,733.92
591 Services Purchased Locally		1,887.11
595 IU Payments By Withholding		43,327.26



LEA : 114067002      Reading SD

Printed 1/7/2021 9:13:00 AM

General Fund (10)

2000 Support Services

	Total
<b>Total Other Purchased Services</b>	<b>\$6,986,617.16</b>
<b>600 <u>Supplies</u></b>	
610 General Supplies	3,058,756.66
620 Energy	2,003,924.22
630 Food	13,410.18
640 Books and Periodicals	144,158.19
650 Supplies & Fees – Technology Related	805,749.95
<b>Total Supplies</b>	<b>\$6,025,999.20</b>
<b>700 <u>Property</u></b>	
752 Capital Equipment – Original and Additional	5,950.00
756 Capitalized Technology Equipment– Original	18,889.52
762 Capitalized Equipment - Replacement	32,851.40
766 Capitalized Technology Equipment– Replacement	3,189,967.25
790 Other Property	109,625.70
<b>Total Property</b>	<b>\$3,357,283.87</b>
<b>800 <u>Other Objects</u></b>	
810 Dues and Fees	161,942.55
820 Claims and Judgments Against the LEA	15,950.00
890 Miscellaneous Expenditures	57,453.47
<b>Total Other Objects</b>	<b>\$235,346.02</b>
<b>Total 2000 Support Services</b>	<b>\$78,584,950.48</b>

LEA : 114067002      Reading SD

Printed 1/7/2021 9:13:00 AM

General Fund (10)				
2100 Support Services – Students	<u>Elementary</u>	<u>Secondary</u>	<u>Federal</u>	<u>Total</u>
100 <u>Personnel Services – Salaries</u>				
100 Personnel Services – Salaries	1,459,392.73	2,140,206.63	1,307,955.77	6,331,877.79
<b>Total Personnel Services – Salaries</b>	<b>\$1,459,392.73</b>	<b>\$2,140,206.63</b>	<b>\$1,307,955.77</b>	<b>\$6,331,877.79</b>
200 <u>Personnel Services – Employee Benefits</u>				
210 Group Insurance – Contracted Provider	310,688.72	441,509.78	252,239.18	1,321,168.08
220 Social Security Contributions	108,667.37	159,217.69	97,659.36	471,659.99
230 PSERS Retirement Contributions	629,294.12	814,290.05	223,818.93	2,162,650.80
250 Unemployment Compensation				(341.64)
260 Workers' Compensation	16,060.59	23,542.26	14,081.98	66,577.02
299 All Other Employee Benefits	221.91	221.91		443.82
<b>Total Personnel Services – Employee Benefits</b>	<b>\$1,064,932.71</b>	<b>\$1,438,781.69</b>	<b>\$587,799.45</b>	<b>\$4,022,158.07</b>
300 <u>Purchased Professional and Technical Services</u>				
322 Professional Educational Services – Ius	60,906.50	154,321.76		215,228.26
329 Professional Educational Services – Other	40,128.50	40,128.50		80,257.00
330 Other Professional Services	59,221.57	62,220.53		121,442.10
<b>Total Purchased Professional and Technical Services</b>	<b>\$160,256.57</b>	<b>\$256,670.79</b>		<b>\$416,927.36</b>
500 <u>Other Purchased Services</u>				
580 Travel	165.83	165.84		2,236.37
<b>Total Other Purchased Services</b>	<b>\$165.83</b>	<b>\$165.84</b>		<b>\$2,236.37</b>
600 <u>Supplies</u>				
610 General Supplies	36.70	1,212.75	3,033.36	4,282.81
640 Books and Periodicals	55,277.57	55,277.58		110,555.15
650 Supplies & Fees – Technology Related	5,935.01	5,935.02		11,870.03
<b>Total Supplies</b>	<b>\$61,249.28</b>	<b>\$62,425.35</b>	<b>\$3,033.36</b>	<b>\$126,707.99</b>
800 <u>Other Objects</u>				
810 Dues and Fees				167.09
<b>Total Other Objects</b>				<b>\$167.09</b>
<b>Total 2100 Support Services – Students</b>	<b>\$2,745,997.12</b>	<b>\$3,898,250.30</b>	<b>\$1,898,788.58</b>	<b>\$10,900,074.67</b>

LEA : 114067002     Reading SD

Printed 1/7/2021 9:13:00 AM

General Fund (10)

2110 Supervision of Student Services	<u>Elementary</u>	<u>Secondary</u>	<u>Federal</u>	<u>Total</u>
<b>100 <u>Personnel Services – Salaries</u></b>				
100 Personnel Services – Salaries	169,594.39	182,448.77		352,043.16
<b>Total Personnel Services – Salaries</b>	<b>\$169,594.39</b>	<b>\$182,448.77</b>		<b>\$352,043.16</b>
<b>200 <u>Personnel Services – Employee Benefits</u></b>				
210 Group Insurance – Contracted Provider	40,075.85	42,269.87		82,345.72
220 Social Security Contributions	12,673.14	13,638.14		26,311.28
230 PSERS Retirement Contributions	57,618.53	61,479.95		119,098.48
260 Workers' Compensation	1,865.51	2,006.94		3,872.45
299 All Other Employee Benefits	221.91	221.91		443.82
<b>Total Personnel Services – Employee Benefits</b>	<b>\$112,454.94</b>	<b>\$119,616.81</b>		<b>\$232,071.75</b>
<b>300 <u>Purchased Professional and Technical Services</u></b>				
329 Professional Educational Services – Other	40,128.50	40,128.50		80,257.00
<b>Total Purchased Professional and Technical Services</b>	<b>\$40,128.50</b>	<b>\$40,128.50</b>		<b>\$80,257.00</b>
<b>Total 2110 Supervision of Student Services</b>	<b>\$322,177.83</b>	<b>\$342,194.08</b>		<b>\$664,371.91</b>

LEA : 114067002      Reading SD

Printed 1/7/2021 9:13:00 AM

General Fund (10)

2111 Supervision of Student Services – Head of Component	<u>Elementary</u>	<u>Secondary</u>	<u>Federal</u>	<u>Total</u>
<b>100 <u>Personnel Services – Salaries</u></b>				
100 Personnel Services – Salaries	57,919.16	57,919.16		115,838.32
<b>Total Personnel Services – Salaries</b>	<b>\$57,919.16</b>	<b>\$57,919.16</b>		<b>\$115,838.32</b>
<b>200 <u>Personnel Services – Employee Benefits</u></b>				
210 Group Insurance – Contracted Provider	11,823.50	11,823.50		23,647.00
220 Social Security Contributions	4,344.29	4,344.29		8,688.58
230 PSERS Retirement Contributions	19,784.44	19,784.44		39,568.88
260 Workers' Compensation	637.10	637.10		1,274.20
299 All Other Employee Benefits	221.91	221.91		443.82
<b>Total Personnel Services – Employee Benefits</b>	<b>\$36,811.24</b>	<b>\$36,811.24</b>		<b>\$73,622.48</b>
<b>Total 2111 Supervision of Student Services – Head of Component</b>	<b>\$94,730.40</b>	<b>\$94,730.40</b>		<b>\$189,460.80</b>

LEA : 114067002      Reading SD

Printed 1/7/2021 9:13:00 AM

General Fund (10)

2119 Supervision of Student Services – All Other Supervision

	<u>Elementary</u>	<u>Secondary</u>	<u>Federal</u>	<u>Total</u>
<b>100 <u>Personnel Services – Salaries</u></b>				
100 Personnel Services – Salaries	111,675.23	124,529.61		236,204.84
<b>Total Personnel Services – Salaries</b>	<b>\$111,675.23</b>	<b>\$124,529.61</b>		<b>\$236,204.84</b>
<b>200 <u>Personnel Services – Employee Benefits</u></b>				
210 Group Insurance – Contracted Provider	28,252.35	30,446.37		58,698.72
220 Social Security Contributions	8,328.85	9,293.85		17,622.70
230 PSERS Retirement Contributions	37,834.09	41,695.51		79,529.60
260 Workers' Compensation	1,228.41	1,369.84		2,598.25
<b>Total Personnel Services – Employee Benefits</b>	<b>\$75,643.70</b>	<b>\$82,805.57</b>		<b>\$158,449.27</b>
<b>300 <u>Purchased Professional and Technical Services</u></b>				
329 Professional Educational Services – Other	40,128.50	40,128.50		80,257.00
<b>Total Purchased Professional and Technical Services</b>	<b>\$40,128.50</b>	<b>\$40,128.50</b>		<b>\$80,257.00</b>
<b>Total 2119 Supervision of Student Services – All Other Supervision</b>	<b>\$227,447.43</b>	<b>\$247,463.68</b>		<b>\$474,911.11</b>

LEA : 114067002      Reading SD

Printed 1/7/2021 9:13:00 AM

General Fund (10)				
2120 Guidance Services	<u>Elementary</u>	<u>Secondary</u>	<u>Federal</u>	<u>Total</u>
100 <u>Personnel Services – Salaries</u>				
100 Personnel Services – Salaries	1,147,357.69	1,870,132.12	298,357.88	3,315,847.69
<b>Total Personnel Services – Salaries</b>	<b>\$1,147,357.69</b>	<b>\$1,870,132.12</b>	<b>\$298,357.88</b>	<b>\$3,315,847.69</b>
200 <u>Personnel Services – Employee Benefits</u>				
210 Group Insurance – Contracted Provider	257,511.99	394,753.07	54,370.20	706,635.26
220 Social Security Contributions	85,361.92	139,045.96	22,305.13	246,713.01
230 PSERS Retirement Contributions	405,857.27	676,935.51	51,055.18	1,133,847.96
260 Workers' Compensation	12,620.81	20,571.44	3,281.81	36,474.06
<b>Total Personnel Services – Employee Benefits</b>	<b>\$761,351.99</b>	<b>\$1,231,305.98</b>	<b>\$131,012.32</b>	<b>\$2,123,670.29</b>
300 <u>Purchased Professional and Technical Services</u>				
330 Other Professional Services		2,998.95		2,998.95
<b>Total Purchased Professional and Technical Services</b>		<b>\$2,998.95</b>		<b>\$2,998.95</b>
600 <u>Supplies</u>				
610 General Supplies		1,176.05		1,176.05
<b>Total Supplies</b>		<b>\$1,176.05</b>		<b>\$1,176.05</b>
<b>Total 2120 Guidance Services</b>	<b>\$1,908,709.68</b>	<b>\$3,105,613.10</b>	<b>\$429,370.20</b>	<b>\$5,443,692.98</b>

LEA : 114067002      Reading SD

Printed 1/7/2021 9:13:00 AM

General Fund (10)

2130 Attendance Services

	<u>Elementary</u>	<u>Secondary</u>	<u>Federal</u>	<u>Total</u>
<b>100 <u>Personnel Services – Salaries</u></b>				
100 Personnel Services – Salaries				361,311.50
<b>Total Personnel Services – Salaries</b>				<b>\$361,311.50</b>
<b>200 <u>Personnel Services – Employee Benefits</u></b>				
210 Group Insurance – Contracted Provider				81,559.82
220 Social Security Contributions				27,017.41
230 PSERS Retirement Contributions				123,430.88
250 Unemployment Compensation				(341.64)
260 Workers' Compensation				3,974.76
<b>Total Personnel Services – Employee Benefits</b>				<b>\$235,641.23</b>
<b>500 <u>Other Purchased Services</u></b>				
580 Travel				1,904.70
<b>Total Other Purchased Services</b>				<b>\$1,904.70</b>
<b>Total 2130 Attendance Services</b>				<b>\$598,857.43</b>

LEA : 114067002      Reading SD

Printed 1/7/2021 9:13:00 AM

General Fund (10)				
2140 Psychological Services	<u>Elementary</u>	<u>Secondary</u>	<u>Federal</u>	<u>Total</u>
100 <u>Personnel Services – Salaries</u>				
100 Personnel Services – Salaries	142,025.15	87,210.23	949,472.89	1,178,708.27
<b>Total Personnel Services – Salaries</b>	<b>\$142,025.15</b>	<b>\$87,210.23</b>	<b>\$949,472.89</b>	<b>\$1,178,708.27</b>
200 <u>Personnel Services – Employee Benefits</u>				
210 Group Insurance – Contracted Provider	12,932.96	4,318.91	173,216.65	190,468.52
220 Social Security Contributions	10,601.96	6,503.22	70,961.34	88,066.52
230 PSERS Retirement Contributions	165,675.85	75,732.11	162,455.55	403,863.51
260 Workers' Compensation	1,569.70	959.31	10,444.01	12,973.02
<b>Total Personnel Services – Employee Benefits</b>	<b>\$190,780.47</b>	<b>\$87,513.55</b>	<b>\$417,077.55</b>	<b>\$695,371.57</b>
300 <u>Purchased Professional and Technical Services</u>				
322 Professional Educational Services – Ius	60,906.50	154,321.76		215,228.26
330 Other Professional Services	59,221.57	59,221.58		118,443.15
<b>Total Purchased Professional and Technical Services</b>	<b>\$120,128.07</b>	<b>\$213,543.34</b>		<b>\$333,671.41</b>
500 <u>Other Purchased Services</u>				
580 Travel	165.83	165.84		331.67
<b>Total Other Purchased Services</b>	<b>\$165.83</b>	<b>\$165.84</b>		<b>\$331.67</b>
600 <u>Supplies</u>				
610 General Supplies	36.70	36.70		73.40
640 Books and Periodicals	55,277.57	55,277.58		110,555.15
650 Supplies & Fees – Technology Related	5,935.01	5,935.02		11,870.03
<b>Total Supplies</b>	<b>\$61,249.28</b>	<b>\$61,249.30</b>		<b>\$122,498.58</b>
<b>Total 2140 Psychological Services</b>	<b>\$514,348.80</b>	<b>\$449,682.26</b>	<b>\$1,366,550.44</b>	<b>\$2,330,581.50</b>



LEA : 114067002     Reading SD

Printed 1/7/2021 9:13:00 AM

General Fund (10)

2160 Social Work Services	<u>Elementary</u>	<u>Secondary</u>	<u>Federal</u>	<u>Total</u>
100 <u>Personnel Services – Salaries</u>				
100 Personnel Services – Salaries			60,125.00	872,229.09
Total Personnel Services – Salaries			\$60,125.00	\$872,229.09
200 <u>Personnel Services – Employee Benefits</u>				
210 Group Insurance – Contracted Provider			24,652.33	190,232.01
220 Social Security Contributions			4,392.89	64,961.56
230 PSERS Retirement Contributions			10,308.20	297,144.07
260 Workers' Compensation			356.16	6,513.54
Total Personnel Services – Employee Benefits			\$39,709.58	\$558,851.18
600 <u>Supplies</u>				
610 General Supplies			3,033.36	3,033.36
Total Supplies			\$3,033.36	\$3,033.36
Total 2160 Social Work Services			\$102,867.94	\$1,434,113.63

LEA : 114067002      Reading SD

Printed 1/7/2021 9:13:00 AM

General Fund (10)

2170 Student Accounting Services

Elementary                      Secondary                      Federal                      Total

100 <u>Personnel Services – Salaries</u>				
100 Personnel Services – Salaries				250,907.07
<b>Total Personnel Services – Salaries</b>				<b>\$250,907.07</b>
200 <u>Personnel Services – Employee Benefits</u>				
210 Group Insurance – Contracted Provider				69,590.90
220 Social Security Contributions				18,529.49
230 PSERS Retirement Contributions				84,980.95
260 Workers' Compensation				2,760.05
<b>Total Personnel Services – Employee Benefits</b>				<b>\$175,861.39</b>
800 <u>Other Objects</u>				
810 Dues and Fees				167.09
<b>Total Other Objects</b>				<b>\$167.09</b>
<b>Total 2170 Student Accounting Services</b>				<b>\$426,935.55</b>

LEA : 114067002      Reading SD

Printed 1/7/2021 9:13:00 AM

General Fund (10)

2190 Other Student Services	<u>Elementary</u>	<u>Secondary</u>	<u>Federal</u>	<u>Total</u>
100 <u>Personnel Services – Salaries</u>				
100 Personnel Services – Salaries	415.50	415.51		831.01
<b>Total Personnel Services – Salaries</b>	<b>\$415.50</b>	<b>\$415.51</b>		<b>\$831.01</b>
200 <u>Personnel Services – Employee Benefits</u>				
210 Group Insurance – Contracted Provider	167.92	167.93		335.85
220 Social Security Contributions	30.35	30.37		60.72
230 PSERS Retirement Contributions	142.47	142.48		284.95
260 Workers' Compensation	4.57	4.57		9.14
<b>Total Personnel Services – Employee Benefits</b>	<b>\$345.31</b>	<b>\$345.35</b>		<b>\$690.66</b>
<b>Total 2190 Other Student Services</b>	<b>\$760.81</b>	<b>\$760.86</b>		<b>\$1,521.67</b>

LEA : 114067002      Reading SD

Printed 1/7/2021 9:13:00 AM

<b>General Fund (10)</b>				
<b>2200 Support Services – Instructional Staff</b>	<b><u>Elementary</u></b>	<b><u>Secondary</u></b>	<b><u>Federal</u></b>	<b><u>Total</u></b>
<b>100 <u>Personnel Services – Salaries</u></b>				
100 Personnel Services – Salaries	1,049,834.98	583,877.66	850,319.14	2,484,031.78
<b>Total Personnel Services – Salaries</b>	<b>\$1,049,834.98</b>	<b>\$583,877.66</b>	<b>\$850,319.14</b>	<b>\$2,484,031.78</b>
<b>200 <u>Personnel Services – Employee Benefits</u></b>				
210 Group Insurance – Contracted Provider	224,018.83	142,381.12	137,985.96	504,385.91
220 Social Security Contributions	78,425.95	43,428.23	63,492.47	185,346.65
230 PSERS Retirement Contributions	405,610.75	299,828.67	145,134.29	850,573.71
240 Tuition Reimbursement	128,793.96	166,953.60		295,747.56
260 Workers' Compensation	11,548.32	6,422.93	9,347.10	27,318.35
299 All Other Employee Benefits	456.82	456.83		913.65
<b>Total Personnel Services – Employee Benefits</b>	<b>\$848,854.63</b>	<b>\$659,471.38</b>	<b>\$355,959.82</b>	<b>\$1,864,285.83</b>
<b>300 <u>Purchased Professional and Technical Services</u></b>				
322 Professional Educational Services – Ius	3,092.50	3,092.50		6,185.00
323 Professional Educational Services – Other Educational Agencies			239,500.47	239,500.47
329 Professional Educational Services – Other	63,219.21	63,219.21		126,438.42
330 Other Professional Services			24,024.60	24,024.60
360 Employee Training and Development Services	2,233.00	59,587.49	1,014,955.45	1,076,775.94
<b>Total Purchased Professional and Technical Services</b>	<b>\$68,544.71</b>	<b>\$125,899.20</b>	<b>\$1,278,480.52</b>	<b>\$1,472,924.43</b>
<b>400 <u>Purchased Property Services</u></b>				
430 Repairs and Maintenance Services	230.01	841.75		1,071.76
<b>Total Purchased Property Services</b>	<b>\$230.01</b>	<b>\$841.75</b>		<b>\$1,071.76</b>
<b>500 <u>Other Purchased Services</u></b>				
550 Printing and Binding	9,192.81	1,047.81		10,240.62
580 Travel	1,638.40	1,404.57	19,365.39	22,408.36
<b>Total Other Purchased Services</b>	<b>\$10,831.21</b>	<b>\$2,452.38</b>	<b>\$19,365.39</b>	<b>\$32,648.98</b>
<b>600 <u>Supplies</u></b>				
610 General Supplies	15,325.87	21,623.16	4,048.87	40,997.90
630 Food	175.00	342.50		517.50
640 Books and Periodicals	12,183.59	4,094.92	10,383.29	26,661.80
650 Supplies & Fees – Technology Related			2,650.00	2,650.00
<b>Total Supplies</b>	<b>\$27,684.46</b>	<b>\$26,060.58</b>	<b>\$17,082.16</b>	<b>\$70,827.20</b>
<b>800 <u>Other Objects</u></b>				
810 Dues and Fees	1,295.00		2,219.95	3,514.95
<b>Total Other Objects</b>	<b>\$1,295.00</b>		<b>\$2,219.95</b>	<b>\$3,514.95</b>
<b>Total 2200 Support Services – Instructional Staff</b>	<b>\$2,007,275.00</b>	<b>\$1,398,602.95</b>	<b>\$2,523,426.98</b>	<b>\$5,929,304.93</b>

LEA : 114067002     Reading SD

Printed 1/7/2021 9:13:00 AM

General Fund (10)

2210 Supervision of Educational Media Services	<u>Elementary</u>	<u>Secondary</u>	<u>Federal</u>	<u>Total</u>
600 <u>Supplies</u>				
610 General Supplies	1,931.25	1,651.80		3,583.05
Total Supplies	\$1,931.25	\$1,651.80		\$3,583.05
Total 2210 Supervision of Educational Media Services	\$1,931.25	\$1,651.80		\$3,583.05

General Fund (10)

2211 Supervision of Educational Media Services – Head of Component

	<u>Elementary</u>	<u>Secondary</u>	<u>Federal</u>	<u>Total</u>
600 <u>Supplies</u>				
610 General Supplies	1,481.25	151.80		1,633.05
Total Supplies	\$1,481.25	\$151.80		\$1,633.05
Total 2211 Supervision of Educational Media Services – Head of Component	\$1,481.25	\$151.80		\$1,633.05

General Fund (10)

2219 Supervision of Educational Media Services – All Other Supervision	<u>Elementary</u>	<u>Secondary</u>	<u>Federal</u>	<u>Total</u>
600 <u>Supplies</u>				
610 General Supplies	450.00	1,500.00		1,950.00
Total Supplies	\$450.00	\$1,500.00		\$1,950.00
Total 2219 Supervision of Educational Media Services – All Other Supervision	\$450.00	\$1,500.00		\$1,950.00

LEA : 114067002      Reading SD

Printed 1/7/2021 9:13:00 AM

General Fund (10)

2220 Technology Support Services	<u>Elementary</u>	<u>Secondary</u>	<u>Federal</u>	<u>Total</u>
100 <u>Personnel Services – Salaries</u>				
100 Personnel Services – Salaries		43,872.40		43,872.40
<b>Total Personnel Services – Salaries</b>		<b>\$43,872.40</b>		<b>\$43,872.40</b>
200 <u>Personnel Services – Employee Benefits</u>				
210 Group Insurance – Contracted Provider		11,169.24		11,169.24
220 Social Security Contributions		3,233.01		3,233.01
230 PSERS Retirement Contributions		15,043.86		15,043.86
260 Workers' Compensation		482.56		482.56
<b>Total Personnel Services – Employee Benefits</b>		<b>\$29,928.67</b>		<b>\$29,928.67</b>
400 <u>Purchased Property Services</u>				
430 Repairs and Maintenance Services	345.94	449.00		794.94
<b>Total Purchased Property Services</b>	<b>\$345.94</b>	<b>\$449.00</b>		<b>\$794.94</b>
600 <u>Supplies</u>				
610 General Supplies	757.21	2,354.54		3,111.75
<b>Total Supplies</b>	<b>\$757.21</b>	<b>\$2,354.54</b>		<b>\$3,111.75</b>
<b>Total 2220 Technology Support Services</b>	<b>\$1,103.15</b>	<b>\$76,604.61</b>		<b>\$77,707.76</b>



LEA : 114067002      Reading SD

Printed 1/7/2021 9:13:00 AM

<b>General Fund (10)</b>				
<b>2250 School Library Services</b>	<b><u>Elementary</u></b>	<b><u>Secondary</u></b>	<b><u>Federal</u></b>	<b><u>Total</u></b>
<b>100 <u>Personnel Services – Salaries</u></b>				
100 Personnel Services – Salaries	647,041.99	242,924.37		889,966.36
<b>Total Personnel Services – Salaries</b>	<b>\$647,041.99</b>	<b>\$242,924.37</b>		<b>\$889,966.36</b>
<b>200 <u>Personnel Services – Employee Benefits</u></b>				
210 Group Insurance – Contracted Provider	140,822.31	71,963.30		212,785.61
220 Social Security Contributions	48,314.31	17,977.09		66,291.40
230 PSERS Retirement Contributions	221,326.48	83,174.78		304,501.26
260 Workers' Compensation	7,117.64	2,672.39		9,790.03
<b>Total Personnel Services – Employee Benefits</b>	<b>\$417,580.74</b>	<b>\$175,787.56</b>		<b>\$593,368.30</b>
<b>400 <u>Purchased Property Services</u></b>				
430 Repairs and Maintenance Services	(115.93)	392.75		276.82
<b>Total Purchased Property Services</b>	<b>(\$115.93)</b>	<b>\$392.75</b>		<b>\$276.82</b>
<b>600 <u>Supplies</u></b>				
610 General Supplies		1,422.85		1,422.85
640 Books and Periodicals	12,183.59	4,094.92		16,278.51
<b>Total Supplies</b>	<b>\$12,183.59</b>	<b>\$5,517.77</b>		<b>\$17,701.36</b>
<b>Total 2250 School Library Services</b>	<b>\$1,076,690.39</b>	<b>\$424,622.45</b>		<b>\$1,501,312.84</b>

LEA : 114067002      Reading SD

Printed 1/7/2021 9:13:00 AM

General Fund (10)				
2260 Instruction and Curriculum Development Services	<u>Elementary</u>	<u>Secondary</u>	<u>Federal</u>	<u>Total</u>
100 <u>Personnel Services – Salaries</u>				
100 Personnel Services – Salaries	392,556.99	277,474.89	162.00	670,193.88
<b>Total Personnel Services – Salaries</b>	<b>\$392,556.99</b>	<b>\$277,474.89</b>	<b>\$162.00</b>	<b>\$670,193.88</b>
200 <u>Personnel Services – Employee Benefits</u>				
210 Group Insurance – Contracted Provider	83,196.52	59,248.58		142,445.10
220 Social Security Contributions	29,331.40	20,718.08	12.39	50,061.87
230 PSERS Retirement Contributions	132,658.42	94,722.09	27.08	227,407.59
260 Workers' Compensation	4,318.06	3,052.24	1.78	7,372.08
299 All Other Employee Benefits	456.82	456.83		913.65
<b>Total Personnel Services – Employee Benefits</b>	<b>\$249,961.22</b>	<b>\$178,197.82</b>	<b>\$41.25</b>	<b>\$428,200.29</b>
300 <u>Purchased Professional and Technical Services</u>				
322 Professional Educational Services – lus	3,092.50	3,092.50		6,185.00
329 Professional Educational Services – Other	63,219.21	63,219.21		126,438.42
<b>Total Purchased Professional and Technical Services</b>	<b>\$66,311.71</b>	<b>\$66,311.71</b>		<b>\$132,623.42</b>
500 <u>Other Purchased Services</u>				
550 Printing and Binding	9,192.81	1,047.81		10,240.62
580 Travel	170.84	13.08		183.92
<b>Total Other Purchased Services</b>	<b>\$9,363.65</b>	<b>\$1,060.89</b>		<b>\$10,424.54</b>
600 <u>Supplies</u>				
610 General Supplies	411.23	74.33		485.56
630 Food	175.00	342.50		517.50
<b>Total Supplies</b>	<b>\$586.23</b>	<b>\$416.83</b>		<b>\$1,003.06</b>
<b>Total 2260 Instruction and Curriculum Development Services</b>	<b>\$718,779.80</b>	<b>\$523,462.14</b>	<b>\$203.25</b>	<b>\$1,242,445.19</b>

LEA : 114067002      Reading SD

Printed 1/7/2021 9:13:00 AM

General Fund (10)				
2270 Instructional Staff Professional Development Services	<u>Elementary</u>	<u>Secondary</u>	<u>Federal</u>	<u>Total</u>
100 <u>Personnel Services – Salaries</u>				
100 Personnel Services – Salaries	10,236.00	19,606.00	850,157.14	879,999.14
<b>Total Personnel Services – Salaries</b>	<b>\$10,236.00</b>	<b>\$19,606.00</b>	<b>\$850,157.14</b>	<b>\$879,999.14</b>
200 <u>Personnel Services – Employee Benefits</u>				
210 Group Insurance – Contracted Provider			137,985.96	137,985.96
220 Social Security Contributions	780.24	1,500.05	63,480.08	65,760.37
230 PSERS Retirement Contributions	51,625.85	106,887.94	145,107.21	303,621.00
240 Tuition Reimbursement	128,793.96	166,953.60		295,747.56
260 Workers' Compensation	112.62	215.74	9,345.32	9,673.68
<b>Total Personnel Services – Employee Benefits</b>	<b>\$181,312.67</b>	<b>\$275,557.33</b>	<b>\$355,918.57</b>	<b>\$812,788.57</b>
300 <u>Purchased Professional and Technical Services</u>				
323 Professional Educational Services – Other Educational Agencies			104,825.33	104,825.33
360 Employee Training and Development Services	2,233.00	59,587.49	1,014,955.45	1,076,775.94
<b>Total Purchased Professional and Technical Services</b>	<b>\$2,233.00</b>	<b>\$59,587.49</b>	<b>\$1,119,780.78</b>	<b>\$1,181,601.27</b>
500 <u>Other Purchased Services</u>				
580 Travel	1,467.56	1,391.49	19,365.39	22,224.44
<b>Total Other Purchased Services</b>	<b>\$1,467.56</b>	<b>\$1,391.49</b>	<b>\$19,365.39</b>	<b>\$22,224.44</b>
600 <u>Supplies</u>				
610 General Supplies	12,226.18	16,119.64	4,048.87	32,394.69
640 Books and Periodicals			10,383.29	10,383.29
650 Supplies & Fees – Technology Related			2,650.00	2,650.00
<b>Total Supplies</b>	<b>\$12,226.18</b>	<b>\$16,119.64</b>	<b>\$17,082.16</b>	<b>\$45,427.98</b>
800 <u>Other Objects</u>				
810 Dues and Fees	1,295.00		2,219.95	3,514.95
<b>Total Other Objects</b>	<b>\$1,295.00</b>		<b>\$2,219.95</b>	<b>\$3,514.95</b>
<b>Total 2270 Instructional Staff Professional Development Services</b>	<b>\$208,770.41</b>	<b>\$372,261.95</b>	<b>\$2,364,523.99</b>	<b>\$2,945,556.35</b>

LEA : 114067002     Reading SD

Printed 1/7/2021 9:13:00 AM

General Fund (10)

2280 Nonpublic Support Services

	<u>Elementary</u>	<u>Secondary</u>	<u>Federal</u>	<u>Total</u>
<b>300 <u>Purchased Professional and Technical Services</u></b>				
323 Professional Educational Services – Other Educational Agencies			134,675.14	134,675.14
330 Other Professional Services			24,024.60	24,024.60
<b>Total Purchased Professional and Technical Services</b>			<b>\$158,699.74</b>	<b>\$158,699.74</b>
<b>Total 2280 Nonpublic Support Services</b>			<b>\$158,699.74</b>	<b>\$158,699.74</b>

LEA : 114067002      Reading SD

Printed 1/7/2021 9:13:00 AM

<b>General Fund (10)</b>				
<b>2300 Support Services – Administration</b>	<b><u>Elementary</u></b>	<b><u>Secondary</u></b>	<b><u>Federal</u></b>	<b><u>Total</u></b>
<b>100 <u>Personnel Services – Salaries</u></b>				
100 Personnel Services – Salaries	3,233,302.51	3,386,108.46		7,614,188.26
<b>Total Personnel Services – Salaries</b>	<b>\$3,233,302.51</b>	<b>\$3,386,108.46</b>		<b>\$7,614,188.26</b>
<b>200 <u>Personnel Services – Employee Benefits</u></b>				
210 Group Insurance – Contracted Provider	677,460.47	711,434.66		1,548,213.95
220 Social Security Contributions	240,871.50	260,820.17		568,848.24
230 PSERS Retirement Contributions	1,078,950.83	1,191,819.34		2,599,328.90
250 Unemployment Compensation		1,044.68		1,659.28
260 Workers' Compensation	35,562.87	38,554.14		85,114.21
280 Other Post-Employment Benefits (OPEB)				5,478,647.02
299 All Other Employee Benefits	2,922.94	(24,159.82)		29,513.89
<b>Total Personnel Services – Employee Benefits</b>	<b>\$2,035,768.61</b>	<b>\$2,179,513.17</b>		<b>\$10,311,325.49</b>
<b>300 <u>Purchased Professional and Technical Services</u></b>				
310 Official / Administrative Services				19,502.10
329 Professional Educational Services – Other				3,360.00
330 Other Professional Services				901,924.34
<b>Total Purchased Professional and Technical Services</b>				<b>\$924,786.44</b>
<b>400 <u>Purchased Property Services</u></b>				
440 Rentals	107,795.08	107,795.07		215,590.15
<b>Total Purchased Property Services</b>	<b>\$107,795.08</b>	<b>\$107,795.07</b>		<b>\$215,590.15</b>
<b>500 <u>Other Purchased Services</u></b>				
520 Insurance – General	228.49	228.49		98,070.98
530 Communications	30,000.00	30,033.00		60,033.00
550 Printing and Binding	375.96	795.00		2,125.96
580 Travel	98.44	996.12		10,383.91
<b>Total Other Purchased Services</b>	<b>\$30,702.89</b>	<b>\$32,052.61</b>		<b>\$170,613.85</b>
<b>600 <u>Supplies</u></b>				
610 General Supplies	18,727.17	1,666.29		66,528.36
630 Food	4,000.00	908.42		12,827.68
640 Books and Periodicals	625.88			1,723.84
650 Supplies & Fees – Technology Related				1,324.05
<b>Total Supplies</b>	<b>\$23,353.05</b>	<b>\$2,574.71</b>		<b>\$82,403.93</b>
<b>700 <u>Property</u></b>				
752 Capital Equipment – Original and Additional	5,950.00			5,950.00
<b>Total Property</b>	<b>\$5,950.00</b>			<b>\$5,950.00</b>
<b>800 <u>Other Objects</u></b>				
810 Dues and Fees				54,807.65
820 Claims and Judgments Against the LEA				15,950.00
890 Miscellaneous Expenditures				2,535.47
<b>Total Other Objects</b>				<b>\$73,293.12</b>
<b>Total 2300 Support Services – Administration</b>	<b>\$5,436,872.14</b>	<b>\$5,708,044.02</b>		<b>\$19,398,151.24</b>

LEA : 114067002      Reading SD

Printed 1/7/2021 9:13:00 AM

<b>General Fund (10)</b>				
<b>2310 Board Services</b>	<u><b>Elementary</b></u>	<u><b>Secondary</b></u>	<u><b>Federal</b></u>	<u><b>Total</b></u>
<b>100 <u>Personnel Services – Salaries</u></b>				
100 Personnel Services – Salaries				13,900.89
<b>Total Personnel Services – Salaries</b>				<b>\$13,900.89</b>
<b>200 <u>Personnel Services – Employee Benefits</u></b>				
220 Social Security Contributions				1,063.24
230 PSERS Retirement Contributions				4,766.67
260 Workers’ Compensation				152.34
<b>Total Personnel Services – Employee Benefits</b>				<b>\$5,982.25</b>
<b>300 <u>Purchased Professional and Technical Services</u></b>				
329 Professional Educational Services – Other				3,360.00
330 Other Professional Services				136,242.40
<b>Total Purchased Professional and Technical Services</b>				<b>\$139,602.40</b>
<b>500 <u>Other Purchased Services</u></b>				
520 Insurance – General				97,614.00
550 Printing and Binding				275.00
580 Travel				3,679.67
<b>Total Other Purchased Services</b>				<b>\$101,568.67</b>
<b>600 <u>Supplies</u></b>				
610 General Supplies				200.00
630 Food				894.03
<b>Total Supplies</b>				<b>\$1,094.03</b>
<b>800 <u>Other Objects</u></b>				
810 Dues and Fees				36,691.57
820 Claims and Judgments Against the LEA				15,950.00
890 Miscellaneous Expenditures				1,500.00
<b>Total Other Objects</b>				<b>\$54,141.57</b>
<b>Total 2310 Board Services</b>				<b>\$316,289.81</b>

LEA : 114067002      Reading SD

Printed 1/7/2021 9:13:00 AM

General Fund (10)

2330 Tax Assessment and Collection Services

Elementary                      Secondary                      Federal                      Total

100 <u>Personnel Services – Salaries</u>				
100 Personnel Services – Salaries				50,346.85
<b>Total Personnel Services – Salaries</b>				<b>\$50,346.85</b>
200 <u>Personnel Services – Employee Benefits</u>				
210 Group Insurance – Contracted Provider				23,362.47
220 Social Security Contributions				3,690.81
230 PSERS Retirement Contributions				17,023.89
260 Workers' Compensation				553.71
<b>Total Personnel Services – Employee Benefits</b>				<b>\$44,630.88</b>
600 <u>Supplies</u>				
610 General Supplies				24,656.65
<b>Total Supplies</b>				<b>\$24,656.65</b>
<b>Total 2330 Tax Assessment and Collection Services</b>				<b>\$119,634.38</b>

General Fund (10)

2340 Staff Relations and Negotiations Services

<u>Elementary</u>	<u>Secondary</u>	<u>Federal</u>	<u>Total</u>
-------------------	------------------	----------------	--------------

100 Personnel Services – Salaries

100 Personnel Services – Salaries			298.63
-----------------------------------	--	--	--------

<b>Total Personnel Services – Salaries</b>			<b>\$298.63</b>
--	--	--	-----------------

200 Personnel Services – Employee Benefits

220 Social Security Contributions			23.75
-----------------------------------	--	--	-------

230 PSERS Retirement Contributions			98.14
------------------------------------	--	--	-------

260 Workers’ Compensation			3.46
---------------------------	--	--	------

280 Other Post-Employment Benefits (OPEB)			5,478,647.02
---	--	--	--------------

299 All Other Employee Benefits			18,400.00
---------------------------------	--	--	-----------

<b>Total Personnel Services – Employee Benefits</b>			<b>\$5,497,172.37</b>
---	--	--	-----------------------

300 Purchased Professional and Technical Services

310 Official / Administrative Services			19,502.10
--	--	--	-----------

330 Other Professional Services			145.16
---------------------------------	--	--	--------

<b>Total Purchased Professional and Technical Services</b>			<b>\$19,647.26</b>
--	--	--	--------------------

<b>Total 2340 Staff Relations and Negotiations Services</b>			<b>\$5,517,118.26</b>
---	--	--	-----------------------



LEA : 114067002     Reading SD

Printed 1/7/2021 9:13:00 AM

General Fund (10)

2350 Legal and Accounting Services	<u>Elementary</u>	<u>Secondary</u>	<u>Federal</u>	<u>Total</u>
300 <u>Purchased Professional and Technical Services</u>				
330 Other Professional Services				760,736.78
Total Purchased Professional and Technical Services				\$760,736.78
Total 2350 Legal and Accounting Services				\$760,736.78

LEA : 114067002      Reading SD

Printed 1/7/2021 9:13:00 AM

General Fund (10)				
2360 Office of the Superintendent / Executive Director Services	<u>Elementary</u>	<u>Secondary</u>	<u>Federal</u>	<u>Total</u>
100 <u>Personnel Services – Salaries</u>				
100 Personnel Services – Salaries				616,667.07
Total Personnel Services – Salaries				\$616,667.07
200 <u>Personnel Services – Employee Benefits</u>				
210 Group Insurance – Contracted Provider				73,288.26
220 Social Security Contributions				39,309.39
230 PSERS Retirement Contributions				201,106.19
260 Workers' Compensation				6,838.33
299 All Other Employee Benefits				28,848.67
Total Personnel Services – Employee Benefits				\$349,390.84
300 <u>Purchased Professional and Technical Services</u>				
330 Other Professional Services				4,800.00
Total Purchased Professional and Technical Services				\$4,800.00
500 <u>Other Purchased Services</u>				
530 Communications	30,000.00	30,000.00		60,000.00
550 Printing and Binding				680.00
580 Travel				5,609.68
Total Other Purchased Services	\$30,000.00	\$30,000.00		\$66,289.68
600 <u>Supplies</u>				
610 General Supplies				21,278.25
630 Food				7,025.23
640 Books and Periodicals				444.08
650 Supplies & Fees – Technology Related				14.00
Total Supplies				\$28,761.56
800 <u>Other Objects</u>				
810 Dues and Fees				10,584.15
890 Miscellaneous Expenditures				1,035.47
Total Other Objects				\$11,619.62
Total 2360 Office of the Superintendent / Executive Director Services	\$30,000.00	\$30,000.00		\$1,077,528.77

LEA : 114067002      Reading SD

Printed 1/7/2021 9:13:00 AM

<b>General Fund (10)</b>				
<b>2380 Office of the Principal Services</b>	<b><u>Elementary</u></b>	<b><u>Secondary</u></b>	<b><u>Federal</u></b>	<b><u>Total</u></b>
<b>100 <u>Personnel Services – Salaries</u></b>				
100 Personnel Services – Salaries	3,233,302.51	3,386,108.46		6,619,410.97
<b>Total Personnel Services – Salaries</b>	<b>\$3,233,302.51</b>	<b>\$3,386,108.46</b>		<b>\$6,619,410.97</b>
<b>200 <u>Personnel Services – Employee Benefits</u></b>				
210 Group Insurance – Contracted Provider	677,460.47	711,434.66		1,388,895.13
220 Social Security Contributions	240,871.50	260,820.17		501,691.67
230 PSERS Retirement Contributions	1,078,950.83	1,191,819.34		2,270,770.17
250 Unemployment Compensation		1,044.68		1,044.68
260 Workers' Compensation	35,562.87	38,554.14		74,117.01
299 All Other Employee Benefits	2,922.94	(24,159.82)		(21,236.88)
<b>Total Personnel Services – Employee Benefits</b>	<b>\$2,035,768.61</b>	<b>\$2,179,513.17</b>		<b>\$4,215,281.78</b>
<b>400 <u>Purchased Property Services</u></b>				
440 Rentals	107,795.08	107,795.07		215,590.15
<b>Total Purchased Property Services</b>	<b>\$107,795.08</b>	<b>\$107,795.07</b>		<b>\$215,590.15</b>
<b>500 <u>Other Purchased Services</u></b>				
520 Insurance – General	228.49	228.49		456.98
530 Communications		33.00		33.00
550 Printing and Binding	375.96	795.00		1,170.96
580 Travel	98.44	996.12		1,094.56
<b>Total Other Purchased Services</b>	<b>\$702.89</b>	<b>\$2,052.61</b>		<b>\$2,755.50</b>
<b>600 <u>Supplies</u></b>				
610 General Supplies	18,727.17	1,666.29		20,393.46
630 Food	4,000.00	908.42		4,908.42
640 Books and Periodicals	625.88			625.88
<b>Total Supplies</b>	<b>\$23,353.05</b>	<b>\$2,574.71</b>		<b>\$25,927.76</b>
<b>700 <u>Property</u></b>				
752 Capital Equipment – Original and Additional	5,950.00			5,950.00
<b>Total Property</b>	<b>\$5,950.00</b>			<b>\$5,950.00</b>
<b>Total 2380 Office of the Principal Services</b>	<b>\$5,406,872.14</b>	<b>\$5,678,044.02</b>		<b>\$11,084,916.16</b>

LEA : 114067002      Reading SD

Printed 1/7/2021 9:13:00 AM

General Fund (10)				
2390 Other Administration Services	<u>Elementary</u>	<u>Secondary</u>	<u>Federal</u>	<u>Total</u>
100 <u>Personnel Services – Salaries</u>				
100 Personnel Services – Salaries				313,563.85
Total Personnel Services – Salaries				\$313,563.85
200 <u>Personnel Services – Employee Benefits</u>				
210 Group Insurance – Contracted Provider				62,668.09
220 Social Security Contributions				23,069.38
230 PSERS Retirement Contributions				105,563.84
250 Unemployment Compensation				614.60
260 Workers' Compensation				3,449.36
299 All Other Employee Benefits				3,502.10
Total Personnel Services – Employee Benefits				\$198,867.37
600 <u>Supplies</u>				
640 Books and Periodicals				653.88
650 Supplies & Fees – Technology Related				1,310.05
Total Supplies				\$1,963.93
800 <u>Other Objects</u>				
810 Dues and Fees				7,531.93
Total Other Objects				\$7,531.93
Total 2390 Other Administration Services				\$521,927.08

LEA : 114067002      Reading SD

Printed 1/7/2021 9:13:00 AM

General Fund (10)				
2400 Support Services – Pupil Health	<u>Elementary</u>	<u>Secondary</u>	<u>Federal</u>	<u>Total</u>
100 <u>Personnel Services – Salaries</u>				
100 Personnel Services – Salaries				1,862,767.60
Total Personnel Services – Salaries				\$1,862,767.60
200 <u>Personnel Services – Employee Benefits</u>				
210 Group Insurance – Contracted Provider				424,534.09
220 Social Security Contributions				138,447.76
230 PSERS Retirement Contributions				633,057.56
260 Workers' Compensation				20,469.57
Total Personnel Services – Employee Benefits				\$1,216,508.98
300 <u>Purchased Professional and Technical Services</u>				
329 Professional Educational Services – Other				20,952.50
330 Other Professional Services			1,079,995.12	1,159,337.36
Total Purchased Professional and Technical Services			\$1,079,995.12	\$1,180,289.86
500 <u>Other Purchased Services</u>				
550 Printing and Binding				1,348.85
580 Travel				1,257.41
Total Other Purchased Services				\$2,606.26
600 <u>Supplies</u>				
610 General Supplies				59,307.73
Total Supplies				\$59,307.73
Total 2400 Support Services – Pupil Health			\$1,079,995.12	\$4,321,480.43

LEA : 114067002     Reading SD

Printed 1/7/2021 9:13:00 AM

General Fund (10)

2410 Supervision of Health Services	<u>Elementary</u>	<u>Secondary</u>	<u>Federal</u>	<u>Total</u>
100 <u>Personnel Services – Salaries</u>				
100 Personnel Services – Salaries				114,292.26
<b>Total Personnel Services – Salaries</b>				<b>\$114,292.26</b>
200 <u>Personnel Services – Employee Benefits</u>				
210 Group Insurance – Contracted Provider				20,009.00
220 Social Security Contributions				8,602.26
230 PSERS Retirement Contributions				38,891.58
260 Workers' Compensation				1,257.34
<b>Total Personnel Services – Employee Benefits</b>				<b>\$68,760.18</b>
<b>Total 2410 Supervision of Health Services</b>				<b>\$183,052.44</b>

LEA : 114067002     Reading SD

Printed 1/7/2021 9:13:00 AM

General Fund (10)

2411 Supervision of Health Services – Head of Component	<u>Elementary</u>	<u>Secondary</u>	<u>Federal</u>	<u>Total</u>
100 <u>Personnel Services – Salaries</u>				
100 Personnel Services – Salaries				114,292.26
Total Personnel Services – Salaries				\$114,292.26
200 <u>Personnel Services – Employee Benefits</u>				
210 Group Insurance – Contracted Provider				20,009.00
220 Social Security Contributions				8,602.26
230 PSERS Retirement Contributions				38,891.58
260 Workers' Compensation				1,257.34
Total Personnel Services – Employee Benefits				\$68,760.18
Total 2411 Supervision of Health Services – Head of Component				\$183,052.44

LEA : 114067002    Reading SD

Printed 1/7/2021 9:13:00 AM

General Fund (10)

2420 Medical Services

	<u>Elementary</u>	<u>Secondary</u>	<u>Federal</u>	<u>Total</u>
300 <u>Purchased Professional and Technical Services</u>				
330 Other Professional Services			910,193.65	986,673.65
Total Purchased Professional and Technical Services			\$910,193.65	\$986,673.65
Total 2420 Medical Services			\$910,193.65	\$986,673.65



LEA : 114067002      Reading SD

Printed 1/7/2021 9:13:00 AM

General Fund (10)

2430 Dental Services

	<u>Elementary</u>	<u>Secondary</u>	<u>Federal</u>	<u>Total</u>
<b>100 <u>Personnel Services – Salaries</u></b>				
100 Personnel Services – Salaries				103,792.64
<b>Total Personnel Services – Salaries</b>				<b>\$103,792.64</b>
<b>200 <u>Personnel Services – Employee Benefits</u></b>				
210 Group Insurance – Contracted Provider				34,634.30
220 Social Security Contributions				7,643.38
230 PSERS Retirement Contributions				33,025.70
260 Workers' Compensation				1,141.60
<b>Total Personnel Services – Employee Benefits</b>				<b>\$76,444.98</b>
<b>500 <u>Other Purchased Services</u></b>				
550 Printing and Binding				36.00
<b>Total Other Purchased Services</b>				<b>\$36.00</b>
<b>600 <u>Supplies</u></b>				
610 General Supplies				8,516.07
<b>Total Supplies</b>				<b>\$8,516.07</b>
<b>Total 2430 Dental Services</b>				<b>\$188,789.69</b>

LEA : 114067002      Reading SD

Printed 1/7/2021 9:13:00 AM

General Fund (10)				
2440 Nursing Services	<u>Elementary</u>	<u>Secondary</u>	<u>Federal</u>	<u>Total</u>
100 <u>Personnel Services – Salaries</u>				
100 Personnel Services – Salaries				1,643,851.71
Total Personnel Services – Salaries				\$1,643,851.71
200 <u>Personnel Services – Employee Benefits</u>				
210 Group Insurance – Contracted Provider				369,554.95
220 Social Security Contributions				122,141.40
230 PSERS Retirement Contributions				560,855.33
260 Workers' Compensation				18,061.49
Total Personnel Services – Employee Benefits				\$1,070,613.17
300 <u>Purchased Professional and Technical Services</u>				
329 Professional Educational Services – Other				20,952.50
330 Other Professional Services			169,801.47	172,663.71
Total Purchased Professional and Technical Services			\$169,801.47	\$193,616.21
500 <u>Other Purchased Services</u>				
550 Printing and Binding				1,312.85
580 Travel				1,257.41
Total Other Purchased Services				\$2,570.26
600 <u>Supplies</u>				
610 General Supplies				50,791.66
Total Supplies				\$50,791.66
Total 2440 Nursing Services			\$169,801.47	\$2,961,443.01

LEA : 114067002      Reading SD

Printed 1/7/2021 9:13:00 AM

General Fund (10)

2490 Other Health Services

Elementary                      Secondary                      Federal                      Total

100 Personnel Services – Salaries

100 Personnel Services – Salaries 830.99

**Total Personnel Services – Salaries \$830.99**

200 Personnel Services – Employee Benefits

210 Group Insurance – Contracted Provider 335.84

220 Social Security Contributions 60.72

230 PSERS Retirement Contributions 284.95

260 Workers' Compensation 9.14

**Total Personnel Services – Employee Benefits \$690.65**

**Total 2490 Other Health Services \$1,521.64**

LEA : 114067002      Reading SD

Printed 1/7/2021 9:13:00 AM

<b>General Fund (10)</b>				
<b>2500 Support Services – Business</b>	<u><b>Elementary</b></u>	<u><b>Secondary</b></u>	<u><b>Federal</b></u>	<u><b>Total</b></u>
<b>100 <u>Personnel Services – Salaries</u></b>				
100 Personnel Services – Salaries				943,422.10
<b>Total Personnel Services – Salaries</b>				<b>\$943,422.10</b>
<b>200 <u>Personnel Services – Employee Benefits</u></b>				
210 Group Insurance – Contracted Provider				209,054.20
220 Social Security Contributions				68,696.32
230 PSERS Retirement Contributions				321,311.26
250 Unemployment Compensation				155,093.00
260 Workers' Compensation				40,372.00
299 All Other Employee Benefits				9,689.29
<b>Total Personnel Services – Employee Benefits</b>				<b>\$804,216.07</b>
<b>300 <u>Purchased Professional and Technical Services</u></b>				
310 Official / Administrative Services				24,000.00
330 Other Professional Services				41,576.00
390 Other Purchased Professional and Technical Services				4,108.08
<b>Total Purchased Professional and Technical Services</b>				<b>\$69,684.08</b>
<b>400 <u>Purchased Property Services</u></b>				
410 Cleaning Services				2,832.64
430 Repairs and Maintenance Services				911.00
440 Rentals				36,668.37
<b>Total Purchased Property Services</b>				<b>\$40,412.01</b>
<b>500 <u>Other Purchased Services</u></b>				
520 Insurance – General				236.00
530 Communications				1,810.15
580 Travel				1,414.77
<b>Total Other Purchased Services</b>				<b>\$3,460.92</b>
<b>600 <u>Supplies</u></b>				
610 General Supplies				90,002.96
630 Food				65.00
640 Books and Periodicals				7.94
650 Supplies & Fees – Technology Related				31,133.00
<b>Total Supplies</b>				<b>\$121,208.90</b>
<b>800 <u>Other Objects</u></b>				
810 Dues and Fees				89,279.74
890 Miscellaneous Expenditures				21,160.63
<b>Total Other Objects</b>				<b>\$110,440.37</b>
<b>Total 2500 Support Services – Business</b>				<b>\$2,092,844.45</b>

LEA : 114067002      Reading SD

Printed 1/7/2021 9:13:00 AM

General Fund (10)				
2510 Fiscal Services	<u>Elementary</u>	<u>Secondary</u>	<u>Federal</u>	<u>Total</u>
100 <u>Personnel Services – Salaries</u>				
100 Personnel Services – Salaries				837,400.99
Total Personnel Services – Salaries				\$837,400.99
200 <u>Personnel Services – Employee Benefits</u>				
210 Group Insurance – Contracted Provider				174,940.32
220 Social Security Contributions				60,869.05
230 PSERS Retirement Contributions				285,292.99
250 Unemployment Compensation				155,093.00
260 Workers' Compensation				39,205.87
299 All Other Employee Benefits				9,689.29
Total Personnel Services – Employee Benefits				\$725,090.52
300 <u>Purchased Professional and Technical Services</u>				
310 Official / Administrative Services				24,000.00
330 Other Professional Services				41,576.00
390 Other Purchased Professional and Technical Services				4,108.08
Total Purchased Professional and Technical Services				\$69,684.08
400 <u>Purchased Property Services</u>				
410 Cleaning Services				2,832.64
430 Repairs and Maintenance Services				911.00
440 Rentals				5,444.49
Total Purchased Property Services				\$9,188.13
500 <u>Other Purchased Services</u>				
520 Insurance – General				236.00
530 Communications				769.40
580 Travel				1,372.21
Total Other Purchased Services				\$2,377.61
600 <u>Supplies</u>				
610 General Supplies				7,183.10
630 Food				65.00
640 Books and Periodicals				7.94
650 Supplies & Fees – Technology Related				25,133.00
Total Supplies				\$32,389.04
800 <u>Other Objects</u>				
810 Dues and Fees				89,279.74
890 Miscellaneous Expenditures				21,160.63
Total Other Objects				\$110,440.37
Total 2510 Fiscal Services				\$1,786,570.74

LEA : 114067002      Reading SD

Printed 1/7/2021 9:13:00 AM

General Fund (10)				
2511 Supervision of Fiscal Services - Head of Component	<u>Elementary</u>	<u>Secondary</u>	<u>Federal</u>	<u>Total</u>
100 <u>Personnel Services – Salaries</u>				
100 Personnel Services – Salaries				222,254.88
Total Personnel Services – Salaries				\$222,254.88
200 <u>Personnel Services – Employee Benefits</u>				
210 Group Insurance – Contracted Provider				20,390.02
220 Social Security Contributions				15,540.53
230 PSERS Retirement Contributions				71,373.28
260 Workers' Compensation				2,444.72
299 All Other Employee Benefits				9,689.29
Total Personnel Services – Employee Benefits				\$119,437.84
500 <u>Other Purchased Services</u>				
520 Insurance – General				236.00
580 Travel				1,186.62
Total Other Purchased Services				\$1,422.62
600 <u>Supplies</u>				
630 Food				65.00
640 Books and Periodicals				7.94
650 Supplies & Fees – Technology Related				37.00
Total Supplies				\$109.94
800 <u>Other Objects</u>				
810 Dues and Fees				995.00
890 Miscellaneous Expenditures				385.00
Total Other Objects				\$1,380.00
Total 2511 Supervision of Fiscal Services - Head of Component				\$344,605.28

LEA : 114067002      Reading SD

Printed 1/7/2021 9:13:00 AM

General Fund (10)				
2514 Payroll Services	<u>Elementary</u>	<u>Secondary</u>	<u>Federal</u>	<u>Total</u>
100 <u>Personnel Services – Salaries</u>				
100 Personnel Services – Salaries				131,093.19
Total Personnel Services – Salaries				\$131,093.19
200 <u>Personnel Services – Employee Benefits</u>				
210 Group Insurance – Contracted Provider				42,843.16
220 Social Security Contributions				9,315.82
230 PSERS Retirement Contributions				44,101.95
260 Workers' Compensation				1,437.24
Total Personnel Services – Employee Benefits				\$97,698.17
300 <u>Purchased Professional and Technical Services</u>				
330 Other Professional Services				25,704.00
Total Purchased Professional and Technical Services				\$25,704.00
800 <u>Other Objects</u>				
890 Miscellaneous Expenditures				149.00
Total Other Objects				\$149.00
Total 2514 Payroll Services				\$254,644.36

LEA : 114067002      Reading SD

Printed 1/7/2021 9:13:00 AM

<b>General Fund (10)</b>				
<b>2515 Financial Accounting Services</b>	<u>Elementary</u>	<u>Secondary</u>	<u>Federal</u>	<u>Total</u>
<b>100 <u>Personnel Services – Salaries</u></b>				
100 Personnel Services – Salaries				311,120.90
<b>Total Personnel Services – Salaries</b>				<b>\$311,120.90</b>
<b>200 <u>Personnel Services – Employee Benefits</u></b>				
210 Group Insurance – Contracted Provider				56,058.39
220 Social Security Contributions				23,266.71
230 PSERS Retirement Contributions				105,669.08
250 Unemployment Compensation				155,093.00
260 Workers' Compensation				33,422.24
<b>Total Personnel Services – Employee Benefits</b>				<b>\$373,509.42</b>
<b>300 <u>Purchased Professional and Technical Services</u></b>				
310 Official / Administrative Services				24,000.00
330 Other Professional Services				15,872.00
390 Other Purchased Professional and Technical Services				4,108.08
<b>Total Purchased Professional and Technical Services</b>				<b>\$43,980.08</b>
<b>400 <u>Purchased Property Services</u></b>				
410 Cleaning Services				2,832.64
430 Repairs and Maintenance Services				911.00
440 Rentals				5,444.49
<b>Total Purchased Property Services</b>				<b>\$9,188.13</b>
<b>500 <u>Other Purchased Services</u></b>				
530 Communications				769.40
580 Travel				185.59
<b>Total Other Purchased Services</b>				<b>\$954.99</b>
<b>600 <u>Supplies</u></b>				
610 General Supplies				7,183.10
<b>Total Supplies</b>				<b>\$7,183.10</b>
<b>800 <u>Other Objects</u></b>				
810 Dues and Fees				88,284.74
<b>Total Other Objects</b>				<b>\$88,284.74</b>
<b>Total 2515 Financial Accounting Services</b>				<b>\$834,221.36</b>



LEA : 114067002    Reading SD

Printed 1/7/2021 9:13:00 AM

General Fund (10)				
2517 Property Accounting Services	<u>Elementary</u>	<u>Secondary</u>	<u>Federal</u>	<u>Total</u>
600 <u>Supplies</u>				
650 Supplies & Fees – Technology Related				2,850.00
Total Supplies				\$2,850.00
Total 2517 Property Accounting Services				\$2,850.00

LEA : 114067002      Reading SD

Printed 1/7/2021 9:13:00 AM

General Fund (10)				
2519 Other Fiscal Services	<u>Elementary</u>	<u>Secondary</u>	<u>Federal</u>	<u>Total</u>
100 <u>Personnel Services – Salaries</u>				
100 Personnel Services – Salaries				172,932.02
Total Personnel Services – Salaries				\$172,932.02
200 <u>Personnel Services – Employee Benefits</u>				
210 Group Insurance – Contracted Provider				55,648.75
220 Social Security Contributions				12,745.99
230 PSERS Retirement Contributions				64,148.68
260 Workers' Compensation				1,901.67
Total Personnel Services – Employee Benefits				\$134,445.09
600 <u>Supplies</u>				
650 Supplies & Fees – Technology Related				22,246.00
Total Supplies				\$22,246.00
800 <u>Other Objects</u>				
890 Miscellaneous Expenditures				20,626.63
Total Other Objects				\$20,626.63
Total 2519 Other Fiscal Services				\$350,249.74

LEA : 114067002      Reading SD

Printed 1/7/2021 9:13:00 AM

General Fund (10)				
2520 Purchasing Services	<u>Elementary</u>	<u>Secondary</u>	<u>Federal</u>	<u>Total</u>
100 <u>Personnel Services – Salaries</u>				
100 Personnel Services – Salaries				106,021.11
Total Personnel Services – Salaries				\$106,021.11
200 <u>Personnel Services – Employee Benefits</u>				
210 Group Insurance – Contracted Provider				34,113.88
220 Social Security Contributions				7,827.27
230 PSERS Retirement Contributions				36,018.27
260 Workers' Compensation				1,166.13
Total Personnel Services – Employee Benefits				\$79,125.55
500 <u>Other Purchased Services</u>				
580 Travel				42.56
Total Other Purchased Services				\$42.56
600 <u>Supplies</u>				
610 General Supplies				21,332.28
650 Supplies & Fees – Technology Related				6,000.00
Total Supplies				\$27,332.28
Total 2520 Purchasing Services				\$212,521.50

General Fund (10)				
2530 Warehousing and Distributing Services	<u>Elementary</u>	<u>Secondary</u>	<u>Federal</u>	<u>Total</u>
400 <u>Purchased Property Services</u>				
440 Rentals				31,223.88
Total Purchased Property Services				\$31,223.88
500 <u>Other Purchased Services</u>				
530 Communications				1,040.75
Total Other Purchased Services				\$1,040.75
Total 2530 Warehousing and Distributing Services				\$32,264.63

LEA : 114067002    Reading SD

Printed 1/7/2021 9:13:00 AM

General Fund (10)

2590 Other Support Services – Business

Elementary

Secondary

Federal

Total

600 Supplies

610 General Supplies

61,487.58

Total Supplies				\$61,487.58
Total 2590 Other Support Services – Business				\$61,487.58

LEA : 114067002      Reading SD

Printed 1/7/2021 9:13:00 AM

<b>General Fund (10)</b>				
<b>2600 Operation and Maintenance of Plant Services</b>	<b><u>Elementary</u></b>	<b><u>Secondary</u></b>	<b><u>Federal</u></b>	<b><u>Total</u></b>
<b>100 <u>Personnel Services – Salaries</u></b>				
100 Personnel Services – Salaries				8,136,003.08
<b>Total Personnel Services – Salaries</b>				<b>\$8,136,003.08</b>
<b>200 <u>Personnel Services – Employee Benefits</u></b>				
210 Group Insurance – Contracted Provider				2,056,634.58
220 Social Security Contributions				616,307.51
230 PSERS Retirement Contributions				2,775,695.21
250 Unemployment Compensation				42,374.48
260 Workers' Compensation				87,390.11
299 All Other Employee Benefits				(21,310.43)
<b>Total Personnel Services – Employee Benefits</b>				<b>\$5,557,091.46</b>
<b>300 <u>Purchased Professional and Technical Services</u></b>				
330 Other Professional Services				349,097.22
340 Technical Services				39,184.03
<b>Total Purchased Professional and Technical Services</b>				<b>\$388,281.25</b>
<b>400 <u>Purchased Property Services</u></b>				
410 Cleaning Services				148,352.61
420 Utility Services				745,830.47
430 Repairs and Maintenance Services				1,452,598.63
440 Rentals				139,005.63
460 Extermination Services				26,455.09
<b>Total Purchased Property Services</b>				<b>\$2,512,242.43</b>
<b>500 <u>Other Purchased Services</u></b>				
521 Fire Insurance				29,440.00
522 Automotive Liability Insurance				66,750.50
529 Other Insurance				2,838.00
530 Communications				192,640.49
549 Other Advertising/Public Relations				4,595.96
580 Travel				219.94
<b>Total Other Purchased Services</b>				<b>\$296,484.89</b>
<b>600 <u>Supplies</u></b>				
610 General Supplies	818,197.86	813,506.59		1,631,704.45
620 Energy				2,003,924.22
650 Supplies & Fees – Technology Related				12,600.00
<b>Total Supplies</b>	<b>\$818,197.86</b>	<b>\$813,506.59</b>		<b>\$3,648,228.67</b>
<b>800 <u>Other Objects</u></b>				
810 Dues and Fees				611.03
<b>Total Other Objects</b>				<b>\$611.03</b>
<b>Total 2600 Operation and Maintenance of Plant Services</b>	<b>\$818,197.86</b>	<b>\$813,506.59</b>		<b>\$20,538,942.81</b>

General Fund (10)

2610 Supervision of Operation and Maintenance of Plant Services	<u>Elementary</u>	<u>Secondary</u>	<u>Federal</u>	<u>Total</u>
100 <u>Personnel Services – Salaries</u>				
100 Personnel Services – Salaries				230,424.13
Total Personnel Services – Salaries				\$230,424.13
200 <u>Personnel Services – Employee Benefits</u>				
210 Group Insurance – Contracted Provider				68,676.54
220 Social Security Contributions				17,109.88
230 PSERS Retirement Contributions				77,615.04
260 Workers' Compensation				2,418.06
Total Personnel Services – Employee Benefits				\$165,819.52
800 <u>Other Objects</u>				
810 Dues and Fees				211.03
Total Other Objects				\$211.03
Total 2610 Supervision of Operation and Maintenance of Plant Services				\$396,454.68

LEA : 114067002    Reading SD

Printed 1/7/2021 9:13:00 AM

General Fund (10)				
2611 Supervision of Operation and Maintenance of Plant Services – Head of Component	<u>Elementary</u>	<u>Secondary</u>	<u>Federal</u>	<u>Total</u>
800 <u>Other Objects</u>				
810 Dues and Fees				211.03
Total Other Objects				\$211.03
Total 2611 Supervision of Operation and Maintenance of Plant Services – Head of Component				\$211.03



General Fund (10)

2619 Supervision of Operation and Maintenance of Plant Services – All Other Supervision	<u>Elementary</u>	<u>Secondary</u>	<u>Federal</u>	<u>Total</u>
100 <u>Personnel Services – Salaries</u>				
100 Personnel Services – Salaries				230,424.13
Total Personnel Services – Salaries				\$230,424.13
200 <u>Personnel Services – Employee Benefits</u>				
210 Group Insurance – Contracted Provider				68,676.54
220 Social Security Contributions				17,109.88
230 PSERS Retirement Contributions				77,615.04
260 Workers' Compensation				2,418.06
Total Personnel Services – Employee Benefits				\$165,819.52
Total 2619 Supervision of Operation and Maintenance of Plant Services – All Other Supervision				\$396,243.65

LEA : 114067002      Reading SD

Printed 1/7/2021 9:13:00 AM

<b>General Fund (10)</b>				
<b>2620 Operation of Buildings Services</b>	<b><u>Elementary</u></b>	<b><u>Secondary</u></b>	<b><u>Federal</u></b>	<b><u>Total</u></b>
<b>100 <u>Personnel Services – Salaries</u></b>				
100 Personnel Services – Salaries				6,785,264.43
<b>Total Personnel Services – Salaries</b>				<b>\$6,785,264.43</b>
<b>200 <u>Personnel Services – Employee Benefits</u></b>				
210 Group Insurance – Contracted Provider				1,613,909.25
220 Social Security Contributions				511,774.36
230 PSERS Retirement Contributions				2,294,694.97
250 Unemployment Compensation				31,005.83
260 Workers' Compensation				72,154.81
299 All Other Employee Benefits				(8,178.28)
<b>Total Personnel Services – Employee Benefits</b>				<b>\$4,515,360.94</b>
<b>300 <u>Purchased Professional and Technical Services</u></b>				
330 Other Professional Services				221,627.55
340 Technical Services				39,184.03
<b>Total Purchased Professional and Technical Services</b>				<b>\$260,811.58</b>
<b>400 <u>Purchased Property Services</u></b>				
420 Utility Services				745,830.47
430 Repairs and Maintenance Services				1,451,544.98
440 Rentals				139,005.63
460 Extermination Services				26,455.09
<b>Total Purchased Property Services</b>				<b>\$2,362,836.17</b>
<b>500 <u>Other Purchased Services</u></b>				
521 Fire Insurance				29,440.00
522 Automotive Liability Insurance				66,750.50
529 Other Insurance				2,838.00
530 Communications				192,640.49
549 Other Advertising/Public Relations				4,595.96
580 Travel				120.48
<b>Total Other Purchased Services</b>				<b>\$296,385.43</b>
<b>600 <u>Supplies</u></b>				
610 General Supplies	797,121.02	792,429.74		1,589,550.76
620 Energy				2,003,924.22
650 Supplies & Fees – Technology Related				12,600.00
<b>Total Supplies</b>	<b>\$797,121.02</b>	<b>\$792,429.74</b>		<b>\$3,606,074.98</b>
<b>800 <u>Other Objects</u></b>				
810 Dues and Fees				240.00
<b>Total Other Objects</b>				<b>\$240.00</b>
<b>Total 2620 Operation of Buildings Services</b>	<b>\$797,121.02</b>	<b>\$792,429.74</b>		<b>\$17,826,973.53</b>

LEA : 114067002      Reading SD

Printed 1/7/2021 9:13:00 AM

General Fund (10)				
2660 Safety and Security Services	<u>Elementary</u>	<u>Secondary</u>	<u>Federal</u>	<u>Total</u>
100 <u>Personnel Services – Salaries</u>				
100 Personnel Services – Salaries				1,120,314.52
Total Personnel Services – Salaries				\$1,120,314.52
200 <u>Personnel Services – Employee Benefits</u>				
210 Group Insurance – Contracted Provider				374,048.79
220 Social Security Contributions				87,423.27
230 PSERS Retirement Contributions				403,385.20
250 Unemployment Compensation				11,368.65
260 Workers' Compensation				12,817.24
299 All Other Employee Benefits				(13,132.15)
Total Personnel Services – Employee Benefits				\$875,911.00
300 <u>Purchased Professional and Technical Services</u>				
330 Other Professional Services				127,469.67
Total Purchased Professional and Technical Services				\$127,469.67
400 <u>Purchased Property Services</u>				
430 Repairs and Maintenance Services				1,053.65
Total Purchased Property Services				\$1,053.65
500 <u>Other Purchased Services</u>				
580 Travel				99.46
Total Other Purchased Services				\$99.46
600 <u>Supplies</u>				
610 General Supplies	21,076.84	21,076.85		42,153.69
Total Supplies	\$21,076.84	\$21,076.85		\$42,153.69
800 <u>Other Objects</u>				
810 Dues and Fees				160.00
Total Other Objects				\$160.00
Total 2660 Safety and Security Services	\$21,076.84	\$21,076.85		\$2,167,161.99

Page - 53 of 74

[illegible][illegible][illegible]

148,352.61

**\$148,352.61**

**\$148,352.61**

LEA : 114067002      Reading SD

Printed 1/7/2021 9:13:00 AM

General Fund (10)				
2700 Student Transportation Services	<u>Elementary</u>	<u>Secondary</u>	<u>Federal</u>	<u>Total</u>
100 <u>Personnel Services – Salaries</u>				
100 Personnel Services – Salaries				43,555.15
Total Personnel Services – Salaries				\$43,555.15
200 <u>Personnel Services – Employee Benefits</u>				
210 Group Insurance – Contracted Provider				13,405.49
220 Social Security Contributions				3,233.16
230 PSERS Retirement Contributions				14,797.88
260 Workers' Compensation				473.58
Total Personnel Services – Employee Benefits				\$31,910.11
300 <u>Purchased Professional and Technical Services</u>				
322 Professional Educational Services – Ius				70,375.50
330 Other Professional Services				11,732.04
Total Purchased Professional and Technical Services				\$82,107.54
500 <u>Other Purchased Services</u>				
511 Student Transportation Services from Another LEA Within the State				262,679.79
513 Contracted Carriers				26,283.86
516 Student Transportation Services From the IU				5,370,585.84
580 Travel				307.50
Total Other Purchased Services				\$5,659,856.99
Total 2700 Student Transportation Services				\$5,817,429.79

LEA : 114067002      Reading SD

Printed 1/7/2021 9:13:00 AM

General Fund (10)

2710 Supervision of Student Transportation Services	<u>Elementary</u>	<u>Secondary</u>	<u>Federal</u>	<u>Total</u>
100 <u>Personnel Services – Salaries</u>				
100 Personnel Services – Salaries				43,096.15
<b>Total Personnel Services – Salaries</b>				<b>\$43,096.15</b>
200 <u>Personnel Services – Employee Benefits</u>				
210 Group Insurance – Contracted Provider				13,405.49
220 Social Security Contributions				3,198.04
230 PSERS Retirement Contributions				14,640.49
260 Workers' Compensation				468.53
<b>Total Personnel Services – Employee Benefits</b>				<b>\$31,712.55</b>
500 <u>Other Purchased Services</u>				
580 Travel				224.90
<b>Total Other Purchased Services</b>				<b>\$224.90</b>
<b>Total 2710 Supervision of Student Transportation Services</b>				<b>\$75,033.60</b>

General Fund (10)

2719 Supervision of Student Transportation Services – All Other Supervision	<u>Elementary</u>	<u>Secondary</u>	<u>Federal</u>	<u>Total</u>
100 <u>Personnel Services – Salaries</u>				
100 Personnel Services – Salaries				43,096.15
Total Personnel Services – Salaries				\$43,096.15
200 <u>Personnel Services – Employee Benefits</u>				
210 Group Insurance – Contracted Provider				13,405.49
220 Social Security Contributions				3,198.04
230 PSERS Retirement Contributions				14,640.49
260 Workers' Compensation				468.53
Total Personnel Services – Employee Benefits				\$31,712.55
500 <u>Other Purchased Services</u>				
580 Travel				224.90
Total Other Purchased Services				\$224.90
Total 2719 Supervision of Student Transportation Services – All Other Supervision				\$75,033.60

LEA : 114067002    Reading SD

Printed 1/7/2021 9:13:00 AM

General Fund (10)

2720 Vehicle Operation Services

Elementary                      Secondary                      Federal                      Total

500 Other Purchased Services

513 Contracted Carriers				26,283.86
516 Student Transportation Services From the IU				5,370,585.84
580 Travel				82.60

<b>Total Other Purchased Services</b>				<b>\$5,396,952.30</b>
<b>Total 2720 Vehicle Operation Services</b>				<b>\$5,396,952.30</b>



LEA : 114067002     Reading SD

Printed 1/7/2021 9:13:00 AM

General Fund (10)

2730 Monitoring Services

	<u>Elementary</u>	<u>Secondary</u>	<u>Federal</u>	<u>Total</u>
<b>100 <u>Personnel Services – Salaries</u></b>				
100 Personnel Services – Salaries				459.00
<b>Total Personnel Services – Salaries</b>				<b>\$459.00</b>
<b>200 <u>Personnel Services – Employee Benefits</u></b>				
220 Social Security Contributions				35.12
230 PSERS Retirement Contributions				157.39
260 Workers’ Compensation				5.05
<b>Total Personnel Services – Employee Benefits</b>				<b>\$197.56</b>
<b>Total 2730 Monitoring Services</b>				<b>\$656.56</b>

LEA : 114067002    Reading SD

Printed 1/7/2021 9:13:00 AM

General Fund (10)				
2750 Nonpublic Transportation	<u>Elementary</u>	<u>Secondary</u>	<u>Federal</u>	<u>Total</u>
500 <u>Other Purchased Services</u>				
511 Student Transportation Services from Another LEA Within the State				262,679.79
Total Other Purchased Services				\$262,679.79
Total 2750 Nonpublic Transportation				\$262,679.79

LEA : 114067002     Reading SD

Printed 1/7/2021 9:13:00 AM

General Fund (10)				
2790 Other Student Transportation Services	<u>Elementary</u>	<u>Secondary</u>	<u>Federal</u>	<u>Total</u>
300 <u>Purchased Professional and Technical Services</u>				
322 Professional Educational Services – Ius				70,375.50
330 Other Professional Services				11,732.04
<b>Total Purchased Professional and Technical Services</b>				<b>\$82,107.54</b>
<b>Total 2790 Other Student Transportation Services</b>				<b>\$82,107.54</b>

LEA : 114067002      Reading SD

Printed 1/7/2021 9:13:00 AM

General Fund (10)

2800 Support Services – Central

	Elementary	Secondary	Federal	Total
<b>100 <u>Personnel Services – Salaries</u></b>				
100 Personnel Services – Salaries			156,706.88	1,223,057.61
<b>Total Personnel Services – Salaries</b>			<b>\$156,706.88</b>	<b>\$1,223,057.61</b>
<b>200 <u>Personnel Services – Employee Benefits</u></b>				
210 Group Insurance – Contracted Provider			43,251.98	299,839.36
220 Social Security Contributions			11,362.44	90,507.26
230 PSERS Retirement Contributions			26,631.60	415,914.37
240 Tuition Reimbursement				27,000.00
250 Unemployment Compensation				6,215.52
260 Workers' Compensation			1,723.68	13,452.16
<b>Total Personnel Services – Employee Benefits</b>			<b>\$82,969.70</b>	<b>\$852,928.67</b>
<b>300 <u>Purchased Professional and Technical Services</u></b>				
310 Official / Administrative Services				16,197.63
329 Professional Educational Services – Other				51,500.88
330 Other Professional Services				43,221.85
340 Technical Services				1,182,078.66
360 Employee Training and Development Services				39,016.55
390 Other Purchased Professional and Technical Services				9,516.44
<b>Total Purchased Professional and Technical Services</b>				<b>\$1,341,532.01</b>
<b>400 <u>Purchased Property Services</u></b>				
430 Repairs and Maintenance Services				1,310.05
440 Rentals				33,216.81
<b>Total Purchased Property Services</b>				<b>\$34,526.86</b>
<b>500 <u>Other Purchased Services</u></b>				
520 Insurance – General				653,199.48
530 Communications				88,814.47
549 Other Advertising/Public Relations				3,489.92
550 Printing and Binding				9,485.00
580 Travel			10,695.28	18,505.66
591 Services Purchased Locally				1,887.11
<b>Total Other Purchased Services</b>			<b>\$10,695.28</b>	<b>\$775,381.64</b>
<b>600 <u>Supplies</u></b>				
610 General Supplies			644.86	1,165,932.45
640 Books and Periodicals			324.50	5,209.46
650 Supplies & Fees – Technology Related				746,172.87
<b>Total Supplies</b>			<b>\$969.36</b>	<b>\$1,917,314.78</b>
<b>700 <u>Property</u></b>				
756 Capitalized Technology Equipment– Original				18,889.52
762 Capitalized Equipment - Replacement				32,851.40
766 Capitalized Technology Equipment– Replacement				3,189,967.25
790 Other Property				109,625.70
<b>Total Property</b>				<b>\$3,351,333.87</b>

LEA : 114067002    Reading SD

Printed 1/7/2021 9:13:00 AM

General Fund (10)

2800 Support Services – Central

Elementary                      Secondary                      Federal                      Total

800 <u>Other Objects</u>				
810 Dues and Fees				13,562.09
890 Miscellaneous Expenditures				33,757.37
<b>Total Other Objects</b>				<b>\$47,319.46</b>
<b>Total 2800 Support Services – Central</b>			<b>\$251,341.22</b>	<b>\$9,543,394.90</b>

LEA : 114067002      Reading SD

Printed 1/7/2021 9:13:00 AM

General Fund (10)				
2810 Planning, Research, Development and Evaluation Services	<u>Elementary</u>	<u>Secondary</u>	<u>Federal</u>	<u>Total</u>
100 <u>Personnel Services – Salaries</u>				
100 Personnel Services – Salaries				101,185.98
Total Personnel Services – Salaries				\$101,185.98
200 <u>Personnel Services – Employee Benefits</u>				
210 Group Insurance – Contracted Provider				23,647.00
220 Social Security Contributions				7,604.94
230 PSERS Retirement Contributions				34,431.80
260 Workers' Compensation				1,112.98
Total Personnel Services – Employee Benefits				\$66,796.72
300 <u>Purchased Professional and Technical Services</u>				
329 Professional Educational Services – Other				51,500.88
390 Other Purchased Professional and Technical Services				1,304.44
Total Purchased Professional and Technical Services				\$52,805.32
500 <u>Other Purchased Services</u>				
580 Travel				2,342.84
591 Services Purchased Locally				1,887.11
Total Other Purchased Services				\$4,229.95
600 <u>Supplies</u>				
610 General Supplies				177.28
640 Books and Periodicals				4,765.88
650 Supplies & Fees – Technology Related				30,856.00
Total Supplies				\$35,799.16
800 <u>Other Objects</u>				
810 Dues and Fees				12,685.00
Total Other Objects				\$12,685.00
Total 2810 Planning, Research, Development and Evaluation Services				\$273,502.13

LEA : 114067002      Reading SD

Printed 1/7/2021 9:13:00 AM

General Fund (10)				
2820 Information Services	<u>Elementary</u>	<u>Secondary</u>	<u>Federal</u>	<u>Total</u>
100 <u>Personnel Services – Salaries</u>				
100 Personnel Services – Salaries				83,921.20
Total Personnel Services – Salaries				\$83,921.20
200 <u>Personnel Services – Employee Benefits</u>				
210 Group Insurance – Contracted Provider				23,647.00
220 Social Security Contributions				6,208.82
230 PSERS Retirement Contributions				28,313.56
260 Workers' Compensation				923.08
Total Personnel Services – Employee Benefits				\$59,092.46
300 <u>Purchased Professional and Technical Services</u>				
340 Technical Services				52,030.50
Total Purchased Professional and Technical Services				\$52,030.50
500 <u>Other Purchased Services</u>				
550 Printing and Binding				9,255.00
Total Other Purchased Services				\$9,255.00
600 <u>Supplies</u>				
610 General Supplies				576.98
Total Supplies				\$576.98
800 <u>Other Objects</u>				
810 Dues and Fees				430.00
Total Other Objects				\$430.00
Total 2820 Information Services				\$205,306.14

LEA : 114067002      Reading SD

Printed 1/7/2021 9:13:00 AM

General Fund (10)				
2823 Public Information Services	<u>Elementary</u>	<u>Secondary</u>	<u>Federal</u>	<u>Total</u>
100 <u>Personnel Services – Salaries</u>				
100 Personnel Services – Salaries				83,921.20
Total Personnel Services – Salaries				\$83,921.20
200 <u>Personnel Services – Employee Benefits</u>				
210 Group Insurance – Contracted Provider				23,647.00
220 Social Security Contributions				6,208.82
230 PSERS Retirement Contributions				28,313.56
260 Workers' Compensation				923.08
Total Personnel Services – Employee Benefits				\$59,092.46
300 <u>Purchased Professional and Technical Services</u>				
340 Technical Services				52,030.50
Total Purchased Professional and Technical Services				\$52,030.50
500 <u>Other Purchased Services</u>				
550 Printing and Binding				9,255.00
Total Other Purchased Services				\$9,255.00
600 <u>Supplies</u>				
610 General Supplies				576.98
Total Supplies				\$576.98
800 <u>Other Objects</u>				
810 Dues and Fees				430.00
Total Other Objects				\$430.00
Total 2823 Public Information Services				\$205,306.14



LEA : 114067002      Reading SD

Printed 1/7/2021 9:13:00 AM

General Fund (10)				
2830 Staff Services	<u>Elementary</u>	<u>Secondary</u>	<u>Federal</u>	<u>Total</u>
100 <u>Personnel Services – Salaries</u>				
100 Personnel Services – Salaries				579,416.79
Total Personnel Services – Salaries				\$579,416.79
200 <u>Personnel Services – Employee Benefits</u>				
210 Group Insurance – Contracted Provider				101,516.20
220 Social Security Contributions				43,193.08
230 PSERS Retirement Contributions				197,563.93
240 Tuition Reimbursement				27,000.00
260 Workers' Compensation				6,373.42
Total Personnel Services – Employee Benefits				\$375,646.63
300 <u>Purchased Professional and Technical Services</u>				
310 Official / Administrative Services				16,197.63
330 Other Professional Services				43,221.85
360 Employee Training and Development Services				39,016.55
390 Other Purchased Professional and Technical Services				8,212.00
Total Purchased Professional and Technical Services				\$106,648.03
500 <u>Other Purchased Services</u>				
520 Insurance – General				653,199.48
549 Other Advertising/Public Relations				2,719.05
550 Printing and Binding				230.00
580 Travel			10,695.28	15,917.05
Total Other Purchased Services			\$10,695.28	\$672,065.58
600 <u>Supplies</u>				
610 General Supplies				10,173.57
640 Books and Periodicals				119.08
Total Supplies				\$10,292.65
800 <u>Other Objects</u>				
810 Dues and Fees				326.90
890 Miscellaneous Expenditures				33,757.37
Total Other Objects				\$34,084.27
Total 2830 Staff Services			\$10,695.28	\$1,778,153.95

LEA : 114067002     Reading SD

Printed 1/7/2021 9:13:00 AM

General Fund (10)

2831 Supervision of Staff Services	<u>Elementary</u>	<u>Secondary</u>	<u>Federal</u>	<u>Total</u>
100 <u>Personnel Services – Salaries</u>				
100 Personnel Services – Salaries				64,421.19
<b>Total Personnel Services – Salaries</b>				<b>\$64,421.19</b>
200 <u>Personnel Services – Employee Benefits</u>				
210 Group Insurance – Contracted Provider				13,642.50
220 Social Security Contributions				4,819.38
230 PSERS Retirement Contributions				21,834.12
260 Workers' Compensation				708.61
<b>Total Personnel Services – Employee Benefits</b>				<b>\$41,004.61</b>
<b>Total 2831 Supervision of Staff Services</b>				<b>\$105,425.80</b>

LEA : 114067002      Reading SD

Printed 1/7/2021 9:13:00 AM

General Fund (10)				
2832 Recruitment and Placement Services	<u>Elementary</u>	<u>Secondary</u>	<u>Federal</u>	<u>Total</u>
100 <u>Personnel Services – Salaries</u>				
100 Personnel Services – Salaries				514,995.60
Total Personnel Services – Salaries				\$514,995.60
200 <u>Personnel Services – Employee Benefits</u>				
210 Group Insurance – Contracted Provider				87,873.70
220 Social Security Contributions				38,373.70
230 PSERS Retirement Contributions				175,729.81
260 Workers' Compensation				5,664.81
Total Personnel Services – Employee Benefits				\$307,642.02
300 <u>Purchased Professional and Technical Services</u>				
310 Official / Administrative Services				16,197.63
330 Other Professional Services				43,221.85
390 Other Purchased Professional and Technical Services				8,212.00
Total Purchased Professional and Technical Services				\$67,631.48
500 <u>Other Purchased Services</u>				
520 Insurance – General				653,199.48
549 Other Advertising/Public Relations				2,719.05
550 Printing and Binding				230.00
580 Travel				400.09
Total Other Purchased Services				\$656,548.62
600 <u>Supplies</u>				
610 General Supplies				10,173.57
640 Books and Periodicals				119.08
Total Supplies				\$10,292.65
800 <u>Other Objects</u>				
810 Dues and Fees				326.90
890 Miscellaneous Expenditures				33,757.37
Total Other Objects				\$34,084.27
Total 2832 Recruitment and Placement Services				\$1,591,194.64

General Fund (10)

2834 Staff Development Services – Non-Instructional, Certified Staff Only	<u>Elementary</u>	<u>Secondary</u>	<u>Federal</u>	<u>Total</u>
200 <u>Personnel Services – Employee Benefits</u>				
240 Tuition Reimbursement				27,000.00
Total Personnel Services – Employee Benefits				\$27,000.00
300 <u>Purchased Professional and Technical Services</u>				
360 Employee Training and Development Services				12,519.58
Total Purchased Professional and Technical Services				\$12,519.58
500 <u>Other Purchased Services</u>				
580 Travel			10,175.80	13,877.41
Total Other Purchased Services			\$10,175.80	\$13,877.41
Total 2834 Staff Development Services – Non-Instructional, Certified Staff Only			\$10,175.80	\$53,396.99

LEA : 114067002     Reading SD

Printed 1/7/2021 9:13:00 AM

General Fund (10)

2836 Staff Development Services – Non-Instructional, Non-Certified Staff Only	<u>Elementary</u>	<u>Secondary</u>	<u>Federal</u>	<u>Total</u>
300 <u>Purchased Professional and Technical Services</u>				
360 Employee Training and Development Services				26,496.97
Total Purchased Professional and Technical Services				\$26,496.97
500 <u>Other Purchased Services</u>				
580 Travel			519.48	1,639.55
Total Other Purchased Services			\$519.48	\$1,639.55
Total 2836 Staff Development Services – Non-Instructional, Non-Certified Staff Only			\$519.48	\$28,136.52

LEA : 114067002      Reading SD

Printed 1/7/2021 9:13:00 AM

General Fund (10)				
2840 Data Processing Services	<u>Elementary</u>	<u>Secondary</u>	<u>Federal</u>	<u>Total</u>
100 <u>Personnel Services – Salaries</u>				
100 Personnel Services – Salaries				301,826.76
Total Personnel Services – Salaries				\$301,826.76
200 <u>Personnel Services – Employee Benefits</u>				
210 Group Insurance – Contracted Provider				107,777.18
220 Social Security Contributions				22,137.98
230 PSERS Retirement Contributions				102,341.20
250 Unemployment Compensation				6,215.52
260 Workers' Compensation				3,319.00
Total Personnel Services – Employee Benefits				\$241,790.88
300 <u>Purchased Professional and Technical Services</u>				
340 Technical Services				1,130,048.16
Total Purchased Professional and Technical Services				\$1,130,048.16
400 <u>Purchased Property Services</u>				
430 Repairs and Maintenance Services				1,310.05
440 Rentals				33,216.81
Total Purchased Property Services				\$34,526.86
500 <u>Other Purchased Services</u>				
530 Communications				88,814.47
549 Other Advertising/Public Relations				770.87
580 Travel				245.77
Total Other Purchased Services				\$89,831.11
600 <u>Supplies</u>				
610 General Supplies				1,154,359.76
650 Supplies & Fees – Technology Related				715,316.87
Total Supplies				\$1,869,676.63
700 <u>Property</u>				
756 Capitalized Technology Equipment – Original				18,889.52
762 Capitalized Equipment - Replacement				32,851.40
766 Capitalized Technology Equipment – Replacement				3,189,967.25
790 Other Property				109,625.70
Total Property				\$3,351,333.87
Total 2840 Data Processing Services				\$7,019,034.27

LEA : 114067002      Reading SD

Printed 1/7/2021 9:13:00 AM

General Fund (10)				
2850 State and Federal Agency Liaison Services	<u>Elementary</u>	<u>Secondary</u>	<u>Federal</u>	<u>Total</u>
100 <u>Personnel Services – Salaries</u>				
100 Personnel Services – Salaries			156,706.88	156,706.88
Total Personnel Services – Salaries			\$156,706.88	\$156,706.88
200 <u>Personnel Services – Employee Benefits</u>				
210 Group Insurance – Contracted Provider			43,251.98	43,251.98
220 Social Security Contributions			11,362.44	11,362.44
230 PSERS Retirement Contributions			26,631.60	53,263.88
260 Workers' Compensation			1,723.68	1,723.68
Total Personnel Services – Employee Benefits			\$82,969.70	\$109,601.98
600 <u>Supplies</u>				
610 General Supplies			644.86	644.86
640 Books and Periodicals			324.50	324.50
Total Supplies			\$969.36	\$969.36
800 <u>Other Objects</u>				
810 Dues and Fees				120.19
Total Other Objects				\$120.19
Total 2850 State and Federal Agency Liaison Services			\$240,645.94	\$267,398.41

LEA : 114067002    Reading SD

Printed 1/7/2021 9:13:00 AM

General Fund (10)				
2900 Other Support Services	<u>Elementary</u>	<u>Secondary</u>	<u>Federal</u>	<u>Total</u>
500 <u>Other Purchased Services</u>				
595 IU Payments By Withholding				43,327.26
Total Other Purchased Services				\$43,327.26
Total 2900 Other Support Services				\$43,327.26



LEA : 114067002    Reading SD

Printed 1/7/2021 9:13:00 AM

General Fund (10)

2910 Support Services Not Listed Elsewhere In the 2000 Series

Elementary                      Secondary                      Federal                      Total

500 Other Purchased Services

595 IU Payments By Withholding 43,327.26

**Total Other Purchased Services \$43,327.26**

**Total 2910 Support Services Not Listed Elsewhere In the 2000 Series \$43,327.26**

LEA : 114067002      Reading SD

Printed 1/7/2021 9:13:12 AM

<b>General Fund (10)</b>	
<b>3000 Operation of Non-Instructional Services</b>	<b><u>Total</u></b>
<b>100 <u>Personnel Services – Salaries</u></b>	
100 Personnel Services – Salaries	1,530,981.24
<b>Total Personnel Services – Salaries</b>	<b>\$1,530,981.24</b>
<b>200 <u>Personnel Services – Employee Benefits</u></b>	
210 Group Insurance – Contracted Provider	278,410.86
220 Social Security Contributions	114,923.57
230 PSERS Retirement Contributions	474,959.47
250 Unemployment Compensation	1,477.28
260 Workers' Compensation	16,290.24
<b>Total Personnel Services – Employee Benefits</b>	<b>\$886,061.42</b>
<b>300 <u>Purchased Professional and Technical Services</u></b>	
322 Professional Educational Services – Ius	81,217.00
330 Other Professional Services	128,425.00
340 Technical Services	36,044.00
390 Other Purchased Professional and Technical Services	13,750.00
<b>Total Purchased Professional and Technical Services</b>	<b>\$259,436.00</b>
<b>400 <u>Purchased Property Services</u></b>	
410 Cleaning Services	2,211.30
430 Repairs and Maintenance Services	5,654.07
440 Rentals	2,064.00
<b>Total Purchased Property Services</b>	<b>\$9,929.37</b>
<b>500 <u>Other Purchased Services</u></b>	
510 Student Transportation Services	141,035.58
520 Insurance – General	35,836.00
550 Printing and Binding	1,750.62
580 Travel	3,451.36
591 Services Purchased Locally	139,337.74
<b>Total Other Purchased Services</b>	<b>\$321,411.30</b>
<b>600 <u>Supplies</u></b>	
610 General Supplies	141,649.47
630 Food	67,107.00
640 Books and Periodicals	440.99
<b>Total Supplies</b>	<b>\$209,197.46</b>
<b>700 <u>Property</u></b>	
790 Other Property	31,572.13
<b>Total Property</b>	<b>\$31,572.13</b>
<b>800 <u>Other Objects</u></b>	
810 Dues and Fees	25,623.00
890 Miscellaneous Expenditures	1,419.98
<b>Total Other Objects</b>	<b>\$27,042.98</b>
<b>Total 3000 Operation of Non-Instructional Services</b>	<b>\$3,275,631.90</b>

LEA : 114067002      Reading SD

Printed 1/7/2021 9:13:12 AM

<b>General Fund (10)</b>				
<b>3200 Student Activities</b>	<u>Elementary</u>	<u>Secondary</u>	<u>Federal</u>	<u>Total</u>
<b>100 <u>Personnel Services – Salaries</u></b>				
100 Personnel Services – Salaries				972,345.42
<b>Total Personnel Services – Salaries</b>				<b>\$972,345.42</b>
<b>200 <u>Personnel Services – Employee Benefits</u></b>				
210 Group Insurance – Contracted Provider				49,074.68
220 Social Security Contributions				73,884.25
230 PSERS Retirement Contributions				284,206.45
250 Unemployment Compensation				1,477.28
260 Workers' Compensation				10,146.31
<b>Total Personnel Services – Employee Benefits</b>				<b>\$418,788.97</b>
<b>300 <u>Purchased Professional and Technical Services</u></b>				
330 Other Professional Services				128,425.00
340 Technical Services				36,044.00
390 Other Purchased Professional and Technical Services				13,750.00
<b>Total Purchased Professional and Technical Services</b>				<b>\$178,219.00</b>
<b>400 <u>Purchased Property Services</u></b>				
410 Cleaning Services				2,211.30
430 Repairs and Maintenance Services				5,654.07
440 Rentals				2,064.00
<b>Total Purchased Property Services</b>				<b>\$9,929.37</b>
<b>500 <u>Other Purchased Services</u></b>				
510 Student Transportation Services				141,035.58
520 Insurance – General				35,836.00
550 Printing and Binding				1,750.62
580 Travel				3,451.36
<b>Total Other Purchased Services</b>				<b>\$182,073.56</b>
<b>600 <u>Supplies</u></b>				
610 General Supplies				115,681.55
630 Food				61,573.91
640 Books and Periodicals				440.99
<b>Total Supplies</b>				<b>\$177,696.45</b>
<b>700 <u>Property</u></b>				
790 Other Property				31,572.13
<b>Total Property</b>				<b>\$31,572.13</b>
<b>800 <u>Other Objects</u></b>				
810 Dues and Fees				24,123.00
890 Miscellaneous Expenditures				1,419.98
<b>Total Other Objects</b>				<b>\$25,542.98</b>
<b>Total 3200 Student Activities</b>				<b>\$1,996,167.88</b>

LEA : 114067002      Reading SD

Printed 1/7/2021 9:13:12 AM

General Fund (10)				
3300 Community Services	<u>Elementary</u>	<u>Secondary</u>	<u>Federal</u>	<u>Total</u>
100 <u>Personnel Services – Salaries</u>				
100 Personnel Services – Salaries			504,925.82	558,635.82
Total Personnel Services – Salaries			\$504,925.82	\$558,635.82
200 <u>Personnel Services – Employee Benefits</u>				
210 Group Insurance – Contracted Provider			212,782.24	229,336.18
220 Social Security Contributions			37,095.73	41,039.32
230 PSERS Retirement Contributions			86,236.16	190,753.02
260 Workers' Compensation			6,143.93	6,143.93
Total Personnel Services – Employee Benefits			\$342,258.06	\$467,272.45
300 <u>Purchased Professional and Technical Services</u>				
322 Professional Educational Services – Ius			81,217.00	81,217.00
Total Purchased Professional and Technical Services			\$81,217.00	\$81,217.00
500 <u>Other Purchased Services</u>				
591 Services Purchased Locally				139,337.74
Total Other Purchased Services				\$139,337.74
600 <u>Supplies</u>				
610 General Supplies			25,967.92	25,967.92
630 Food			5,533.09	5,533.09
Total Supplies			\$31,501.01	\$31,501.01
800 <u>Other Objects</u>				
810 Dues and Fees			1,500.00	1,500.00
Total Other Objects			\$1,500.00	\$1,500.00
Total 3300 Community Services			\$961,401.89	\$1,279,464.02

General Fund (10)

4000 Facilities Acquisition, Construction and Improvement Services		<u>Total</u>
300 <u>Purchased Professional and Technical Services</u>		
330 Other Professional Services		438,947.96
Total Purchased Professional and Technical Services		\$438,947.96
400 <u>Purchased Property Services</u>		
450 Construction Services		4,696,299.36
Total Purchased Property Services		\$4,696,299.36
Total 4000 Facilities Acquisition, Construction and Improvement Services		\$5,135,247.32

LEA : 114067002    Reading SD

Printed 1/7/2021 9:13:18 AM

General Fund (10)

4400 Architecture and Engineering Services / Educational Specifications – Improvements	<u>Elementary</u>	<u>Secondary</u>	<u>Federal</u>	<u>Total</u>
300 <u>Purchased Professional and Technical Services</u>				
330 Other Professional Services				438,947.96
Total Purchased Professional and Technical Services				\$438,947.96
Total 4400 Architecture and Engineering Services / Educational Specifications – Improvements				\$438,947.96

LEA : 114067002    Reading SD

Printed 1/7/2021 9:13:18 AM

General Fund (10)				
4600 Existing Building Improvement Services	<u>Elementary</u>	<u>Secondary</u>	<u>Federal</u>	<u>Total</u>
400 <u>Purchased Property Services</u>				
450 Construction Services				4,696,299.36
Total Purchased Property Services				\$4,696,299.36
Total 4600 Existing Building Improvement Services				\$4,696,299.36

LEA : 114067002     Reading SD

Printed 1/7/2021 9:13:27 AM

General Fund (10)

5000 Other Expenditures and Financing Uses

Total

800	<u>Other Objects</u>	
830	Interest	11,504,304.30
880	Refunds of Prior Years' Receipts	224,657.88
Total Other Objects		\$11,728,962.18
900	<u>Other Uses of Funds</u>	
910	Redemption of Principal	12,788,117.00
Total Other Uses of Funds		\$12,788,117.00
Total 5000 Other Expenditures and Financing Uses		\$24,517,079.18



LEA : 114067002     Reading SD

Printed 1/7/2021 9:13:27 AM

General Fund (10)				
5100 Debt Service / Other Expenditures and Financing Uses	<u>Elementary</u>	<u>Secondary</u>	<u>Federal</u>	<u>Total</u>
800 <u>Other Objects</u>				
830 Interest				11,504,304.30
880 Refunds of Prior Years' Receipts				224,657.88
Total Other Objects				\$11,728,962.18
900 <u>Other Uses of Funds</u>				
910 Redemption of Principal				12,788,117.00
Total Other Uses of Funds				\$12,788,117.00
Total 5100 Debt Service / Other Expenditures and Financing Uses				\$24,517,079.18

LEA : 114067002    Reading SD

Printed 1/7/2021 9:13:27 AM

General Fund (10)

5110 Debt Service	<u>Elementary</u>	<u>Secondary</u>	<u>Federal</u>	<u>Total</u>
800 <u>Other Objects</u>				
830 Interest				11,504,304.30
Total Other Objects				\$11,504,304.30
900 <u>Other Uses of Funds</u>				
910 Redemption of Principal				12,788,117.00
Total Other Uses of Funds				\$12,788,117.00
Total 5110 Debt Service				\$24,292,421.30

LEA : 114067002    Reading SD

Printed 1/7/2021 9:13:27 AM

General Fund (10)

5130 Refund of Prior Year Revenues / Receipts	<u>Elementary</u>	<u>Secondary</u>	<u>Federal</u>	<u>Total</u>
800 <u>Other Objects</u>				
880 Refunds of Prior Years' Receipts				224,657.88
Total Other Objects				\$224,657.88
Total 5130 Refund of Prior Year Revenues / Receipts				\$224,657.88

LEA : 114067002      Reading SD

Printed 1/7/2021 9:13:14 AM

Other Comptroller-Approved Special Revenue Funds (28)

3000 Operation of Non-Instructional Services	Total
400 <u>Purchased Property Services</u>	
440 Rentals	500.00
Total Purchased Property Services	\$500.00
500 <u>Other Purchased Services</u>	
580 Travel	152.39
591 Services Purchased Locally	14,216.73
Total Other Purchased Services	\$14,369.12
600 <u>Supplies</u>	
610 General Supplies	14,930.09
Total Supplies	\$14,930.09
800 <u>Other Objects</u>	
890 Miscellaneous Expenditures	43,492.24
Total Other Objects	\$43,492.24
Total 3000 Operation of Non-Instructional Services	\$73,291.45

LEA : 114067002      Reading SD

Printed 1/7/2021 9:13:14 AM

Other Comptroller-Approved Special Revenue Funds (28)

3300 Community Services	<u>Elementary</u>	<u>Secondary</u>	<u>Federal</u>	<u>Total</u>
400 <u>Purchased Property Services</u>				
440 Rentals				500.00
<b>Total Purchased Property Services</b>				<b>\$500.00</b>
500 <u>Other Purchased Services</u>				
580 Travel				152.39
591 Services Purchased Locally				14,216.73
<b>Total Other Purchased Services</b>				<b>\$14,369.12</b>
600 <u>Supplies</u>				
610 General Supplies				14,930.09
<b>Total Supplies</b>				<b>\$14,930.09</b>
800 <u>Other Objects</u>				
890 Miscellaneous Expenditures				43,492.24
<b>Total Other Objects</b>				<b>\$43,492.24</b>
<b>Total 3300 Community Services</b>				<b>\$73,291.45</b>

LEA : 114067002     Reading SD

Printed 1/7/2021 9:13:04 AM

Other Capital Projects Fund (39)

2000 Support Services

Total

800 Other Objects

810 Dues and Fees

327,421.00

Total Other Objects

\$327,421.00

Total 2000 Support Services

\$327,421.00

Page 151

LEA : 114067002    Reading SD

Printed 1/7/2021 9:13:04 AM

Other Capital Projects Fund (39)

2390 Other Administration Services

<u>Elementary</u>	<u>Secondary</u>	<u>Federal</u>	<u>Total</u>
-------------------	------------------	----------------	--------------

800 Other Objects

810 Dues and Fees			327,421.00
-------------------	--	--	------------

<b>Total Other Objects</b>			<b>\$327,421.00</b>
----------------------------	--	--	---------------------

<b>Total 2390 Other Administration Services</b>			<b>\$327,421.00</b>
---	--	--	---------------------



LEA : 114067002    Reading SD

Printed 1/7/2021 9:13:06 AM

Debt Service Fund (40)

2000 Support Services

800 Other Objects

810 Dues and Fees	220,141.83
Total Other Objects	\$220,141.83
Total 2000 Support Services	\$220,141.83

LEA : 114067002    Reading SD

Printed 1/7/2021 9:13:06 AM

Debt Service Fund (40)

2300 Support Services – Administration

<u>Elementary</u>	<u>Secondary</u>	<u>Federal</u>	<u>Total</u>
-------------------	------------------	----------------	--------------

800 Other Objects

810 Dues and Fees			220,141.83
-------------------	--	--	------------

<b>Total Other Objects</b>			<b>\$220,141.83</b>
----------------------------	--	--	---------------------

<b>Total 2300 Support Services – Administration</b>			<b>\$220,141.83</b>
---	--	--	---------------------

LEA : 114067002    Reading SD

Printed 1/7/2021 9:13:06 AM

Debt Service Fund (40)				
2390 Other Administration Services	<u>Elementary</u>	<u>Secondary</u>	<u>Federal</u>	<u>Total</u>
800 <u>Other Objects</u>				
810 Dues and Fees				220,141.83
Total Other Objects				\$220,141.83
Total 2390 Other Administration Services				\$220,141.83

Debt Service Fund (40)

5000 Other Expenditures and Financing Uses

Total

800 <u>Other Objects</u>	
830 Interest	14,241.48
Total Other Objects	\$14,241.48
900 <u>Other Uses of Funds</u>	
910 Redemption of Principal	25,991,883.74
Total Other Uses of Funds	\$25,991,883.74
Total 5000 Other Expenditures and Financing Uses	\$26,006,125.22

LEA : 114067002    Reading SD

Printed 1/7/2021 9:13:30 AM

Debt Service Fund (40)

5100 Debt Service / Other Expenditures and Financing Uses	<u>Elementary</u>	<u>Secondary</u>	<u>Federal</u>	<u>Total</u>
800 <u>Other Objects</u>				
830 Interest				14,241.48
Total Other Objects				\$14,241.48
900 <u>Other Uses of Funds</u>				
910 Redemption of Principal				25,991,883.74
Total Other Uses of Funds				\$25,991,883.74
Total 5100 Debt Service / Other Expenditures and Financing Uses				\$26,006,125.22

LEA : 114067002    Reading SD

Printed 1/7/2021 9:13:30 AM

Debt Service Fund (40)				
5110 Debt Service	<u>Elementary</u>	<u>Secondary</u>	<u>Federal</u>	<u>Total</u>
800 <u>Other Objects</u>				
830 Interest				14,241.48
Total Other Objects				\$14,241.48
Total 5110 Debt Service				\$14,241.48

LEA : 114067002    Reading SD

Printed 1/7/2021 9:13:30 AM

Debt Service Fund (40)

5120 Debt Service – Refunded Bonds	<u>Elementary</u>	<u>Secondary</u>	<u>Federal</u>	<u>Total</u>
900 <u>Other Uses of Funds</u>				
910 Redemption of Principal				25,991,883.74
Total Other Uses of Funds				\$25,991,883.74
Total 5120 Debt Service – Refunded Bonds				\$25,991,883.74

LEA : 114067002     Reading SD

Printed 1/7/2021 9:13:48 AM

	General Fund(10)	Student Sponsored Activity Fund(21)	Public Purpose Trust(27)	Other Compt Approved (28)	Athletic / Activity(29)
<b>1000 Instruction</b>					
1100 Regular Programs - Elementary / Secondary	105,747,228.42				
1200 Special Programs - Elementary / Secondary	51,028,194.42				
1300 Vocational Education	5,487,254.11				
1400 Other Instructional Programs - Elementary / Secondary	2,902,513.44				
1500 Nonpublic School Programs	701,844.36				
1600 Adult Education Programs	17,853.69				
1800 Pre-Kindergarten	1,970,976.30				
<b>Total Instruction</b>	<b>\$167,855,864.74</b>				
<b>2000 Support Services</b>					
2100 Support Services - Students	10,900,074.67				
2200 Support Services - Instructional Staff	5,929,304.93				
2300 Support Services - Administration	19,398,151.24				
2400 Support Services - Pupil Health	4,321,480.43				
2500 Support Services - Business	2,092,844.45				
2600 Operation and Maintenance of Plant Services	20,538,942.81				
2700 Student Transportation Services	5,817,429.79				
2800 Support Services - Central	9,543,394.90				
2900 Other Support Services	43,327.26				
<b>Total Support Services</b>	<b>\$78,584,950.48</b>				
<b>3000 Operation of Non-Instructional Services</b>					
3200 Student Activities	1,996,167.88				
3300 Community Services	1,279,464.02			73,291.45	
<b>Total Operation of Non-Instructional Services</b>	<b>\$3,275,631.90</b>			<b>\$73,291.45</b>	
<b>4000 Facilities Acquisition, Construction and Improvement Services</b>					
4400 Architecture and Engineering Services / Educational Specifications - Improvements	438,947.96				
4600 Existing Building Improvement Services	4,696,299.36				
<b>Total Facilities Acquisition, Construction and Improvement Services</b>	<b>\$5,135,247.32</b>				
<b>5000 Other Expenditures and Financing Uses</b>					
5100 Debt Service / Other Expenditures and Financing Uses	24,517,079.18				
<b>Total Other Expenditures and Financing Uses</b>	<b>\$24,517,079.18</b>				
<b>TOTAL ACTUAL EXPENDITURES &amp; OTHER FINANCING USES</b>	<b>\$279,368,773.62</b>			<b>\$73,291.45</b>	



LEA : 114067002     Reading SD

Printed 1/7/2021 9:13:48 AM

	<u>Capital Reserve (690.1850)(31)</u>	<u>Capital Reserve (1431)(32)</u>	<u>Other Capital Projects Fund(39)</u>	<u>Debt Service(40)</u>	<u>Permanent(90)</u>
<b>1000 <u>Instruction</u></b>					
1100 Regular Programs - Elementary / Secondary					
1200 Special Programs - Elementary / Secondary					
1300 Vocational Education					
1400 Other Instructional Programs - Elementary / Secondary					
1500 Nonpublic School Programs					
1600 Adult Education Programs					
1800 Pre-Kindergarten					
<b>Total Instruction</b>					
<b>2000 <u>Support Services</u></b>					
2100 Support Services - Students					
2200 Support Services - Instructional Staff					
2300 Support Services - Administration			327,421.00	220,141.83	
2400 Support Services - Pupil Health					
2500 Support Services - Business					
2600 Operation and Maintenance of Plant Services					
2700 Student Transportation Services					
2800 Support Services - Central					
2900 Other Support Services					
<b>Total Support Services</b>			<b>\$327,421.00</b>	<b>\$220,141.83</b>	
<b>3000 <u>Operation of Non-Instructional Services</u></b>					
3200 Student Activities					
3300 Community Services					
<b>Total Operation of Non-Instructional Services</b>					
<b>4000 <u>Facilities Acquisition, Construction and Improvement Services</u></b>					
4400 Architecture and Engineering Services / Educational Specifications - Improvements					
4600 Existing Building Improvement Services					
<b>Total Facilities Acquisition, Construction and Improvement Services</b>					
<b>5000 <u>Other Expenditures and Financing Uses</u></b>					
5100 Debt Service / Other Expenditures and Financing Uses				26,006,125.22	
<b>Total Other Expenditures and Financing Uses</b>				<b>\$26,006,125.22</b>	
<b>TOTAL ACTUAL EXPENDITURES &amp; OTHER FINANCING USES</b>			<b>\$327,421.00</b>	<b>\$26,226,267.05</b>	

	<u>Total</u>
<b>1000 <u>Instruction</u></b>	
1100 Regular Programs - Elementary / Secondary	105,747,228.42
1200 Special Programs - Elementary / Secondary	51,028,194.42
1300 Vocational Education	5,487,254.11
1400 Other Instructional Programs - Elementary / Secondary	2,902,513.44
1500 Nonpublic School Programs	701,844.36
1600 Adult Education Programs	17,853.69
1800 Pre-Kindergarten	1,970,976.30
<b>Total Instruction</b>	<b>\$167,855,864.74</b>
<b>2000 <u>Support Services</u></b>	
2100 Support Services - Students	10,900,074.67
2200 Support Services - Instructional Staff	5,929,304.93
2300 Support Services - Administration	19,945,714.07
2400 Support Services - Pupil Health	4,321,480.43
2500 Support Services - Business	2,092,844.45
2600 Operation and Maintenance of Plant Services	20,538,942.81
2700 Student Transportation Services	5,817,429.79
2800 Support Services - Central	9,543,394.90
2900 Other Support Services	43,327.26
<b>Total Support Services</b>	<b>\$79,132,513.31</b>
<b>3000 <u>Operation of Non-Instructional Services</u></b>	
3200 Student Activities	1,996,167.88
3300 Community Services	1,352,755.47
<b>Total Operation of Non-Instructional Services</b>	<b>\$3,348,923.35</b>
<b>4000 <u>Facilities Acquisition, Construction and Improvement Services</u></b>	
4400 Architecture and Engineering Services / Educational Specifications - Improvements	438,947.96
4600 Existing Building Improvement Services	4,696,299.36
<b>Total Facilities Acquisition, Construction and Improvement Services</b>	<b>\$5,135,247.32</b>
<b>5000 <u>Other Expenditures and Financing Uses</u></b>	
5100 Debt Service / Other Expenditures and Financing Uses	50,523,204.40
<b>Total Other Expenditures and Financing Uses</b>	<b>\$50,523,204.40</b>
<b>TOTAL ACTUAL EXPENDITURES &amp; OTHER FINANCING USES</b>	<b>\$305,995,753.12</b>

LEA : 114067002     Reading SD

Printed 1/7/2021 9:13:57 AM

PSERS Salary Data (Salary Data should relate to the General Fund only)

Amount	Description	Amount
	Total Salary Base for salaries subject to PSERS withholding	93,462,521.64
	Total Federally Funded salaries subject to PSERS withholding	8,451,466.28

Title I Expenditure Data

Amount	Description	Amount
	Expenditures Funded with Current Title I Funds	10,137,285.70
	Expenditures Funded with Carry over Title I Funds	1,262,514.96
Total Title I Expenditure Data		\$11,399,800.66

Benefits for Staff Relative to Collective  
Bargaining Agreements

	OBJECT	COVERED	NOT COVERED	TOTAL
10 General Fund				
	211 Medical Insurance			
	212 Dental Insurance			
	215 Eye Care Insurance			
	216 Prescription Insurance			
	271 Self-Insurance Medical Benefits	24,314,609.13		24,314,609.13
	272 Self-Insurance Dental Benefits			
	275 Self-Insurance Eye Care Benefits			
	276 Self-Insurance Prescription Benefits			
	FUND TOTAL	\$24,314,609.13		\$24,314,609.13
50 Enterprise Fund	No Self Insurance data to report			
	211 Medical Insurance			
	212 Dental Insurance			
	215 Eye Care Insurance			
	216 Prescription Insurance			
	271 Self-Insurance Medical Benefits			
	272 Self-Insurance Dental Benefits			
	275 Self-Insurance Eye Care Benefits			
	276 Self-Insurance Prescription Benefits			
	FUND TOTAL			
60 Internal Service Fund	No Self Insurance data to report			
	211 Medical Insurance			
	212 Dental Insurance			
	215 Eye Care Insurance			
	216 Prescription Insurance			
	271 Self-Insurance Medical Benefits			
	272 Self-Insurance Dental Benefits			
	275 Self-Insurance Eye Care Benefits			
	276 Self-Insurance Prescription Benefits			
	FUND TOTAL			
Total of All Funds		\$24,314,609.13		\$24,314,609.13

LEA : 114067002     Reading SD

Printed 1/7/2021 9:14:04 AM

Function	Special Education (Prior Year)	Nonspecial Education (Prior Year)	Total (Prior Year)	Special Education (Current Year)	Nonspecial Education (Current Year)	Total (Current Year)
2120 Guidance Services	149,903.10	4,986,275.88	5,136,178.98	150,039.56	5,292,528.17	5,442,567.73
2140 Psychological Services	852,457.86	1,668,992.63	2,521,450.49	682,392.40	1,648,189.10	2,330,581.50
2150 Speech Pathology and Audiology Services						
2160 Social Work Services		1,324,514.76	1,324,514.76		102,867.94	102,867.94
2260 Instruction and Curriculum Development Services	60,269.30	1,145,113.64	1,205,382.94	299,425.94	943,019.25	1,242,445.19
2350 Legal and Accounting Services	165,287.48	858,095.61	1,023,383.09	244,809.14	515,927.64	760,736.78
2420 Medical Services		864,739.47	864,739.47		986,673.65	986,673.65
2440 Nursing Services	178,242.49	2,575,135.85	2,753,378.34	169,801.47	2,786,792.72	2,956,594.19
2700 Student Transportation Services	3,556,428.73	2,049,778.48	5,606,207.21	3,892,759.89	1,924,669.90	5,817,429.79
Total	\$4,962,588.96	\$15,472,646.32	\$20,435,235.28	\$5,439,228.40	\$14,200,668.37	\$19,639,896.77

LEA : 114067002      Reading SD

Printed 1/7/2021 9:14:10 AM

(PRINCIPAL AMOUNTS ONLY)								
<u>GOVERNMENTAL FUNDS/ ACTIVITIES</u>	Short-Term Borrowing	General Obligation Bonds/Notes	Authority Building Obligations	Other Long-Term Debt	Other Post- Employment Benefits (OPEB)	Compensated Absences	Net Pension Liability	Total
1. Debt at Beginning of Fiscal Year		267,502,014.00			220,045,727.00	2,409,265.37	340,534,480.00	830,491,486.37
2. Additional Debt Incurred During Year		52,600,000.00			44,009,145.00		13,621,379.00	110,230,524.00
3. Retirements and Repayments		38,780,000.00				18,268.18		38,798,268.18
4. Debt at End of Fiscal Year		281,322,014.00			264,054,872.00	2,390,997.19	354,155,859.00	901,923,742.19
5. Accreted Interest at End Of Fiscal Year		36,801,567.00						36,801,567.00
6. Total Debt and Accreted Interest		318,123,581.00			264,054,872.00	2,390,997.19	354,155,859.00	938,725,309.19
7. Current Portion P&I - Due within 1 year		26,958,151.00						26,958,151.00
8. Interest Paid during current fiscal year		11,518,615.00						11,518,615.00

(PRINCIPAL AMOUNTS ONLY)							
<u>PROPRIETARY FUNDS</u>							
1. Debt at Beginning of Fiscal Year							
2. Additional Debt Incurred During Year							
3. Retirements and Repayments							
4. Debt at End of Fiscal Year							
5. Accreted Interest at End Of Fiscal Year							
6. Total Debt and Accreted Interest							
7. Current Portion P&I - Due within 1 year							
8. Interest Paid during current fiscal year							

LEA : 114067002     Reading SD

Printed 1/7/2021 9:14:10 AM

Total Principal and Interest Payments Made by Your School - All Funds

Function	Fund		Principal (910)	Principal (920)	Interest (830)	Total (Principal +Interest)	Misc Other Uses (990)
5110	10	General Fund	12,788,117.00		11,504,304.30	24,292,421.30	
5110	20	Special Revenue Funds					
5110	30	Capital Projects Funds					
5110	40	Debt Service Fund			14,241.48	14,241.48	
5110	90	Permanent Fund					
5120	10	General Fund					
5120	20	Special Revenue Funds					
5120	30	Capital Projects Funds					
5120	40	Debt Service Fund	25,991,883.74			25,991,883.74	
Total Debt Payments - Governmental Funds			\$38,780,000.74		\$11,518,545.78	\$50,298,546.52	

Function	Fund		Principal (910)	Principal (920)	Interest (830)	Total (Principal +Interest)
5110	50	Enterprise Fund				
5110	60	Internal Service Fund				
5120	50	Enterprise Fund				
5120	60	Internal Service Fund				
Total Debt Payments - Proprietary Funds						

LEA : 114067002      Reading SD

Printed 1/7/2021 9:14:10 AM

Debt Category	Debt Issue Date (MM/YYYY)	Principal Amounts Only				Current Portion Due Within One Year (Principal and Interest)	Interest Paid During Fiscal Year
		Debt at Beginning of Fiscal Year	Additions	Reductions / Repayments	Debt at End of Fiscal Year		
General Obligation Bonds/Notes – CIB	10/2019		29,350,000.00		29,350,000.00	1,611,506.00	439,550.00
General Obligation Bonds/Notes – CIB	10/2019		7,000,000.00	915,000.00	6,085,000.00	1,143,400.00	118,873.00
General Obligation Bonds/Notes – CIB	10/2019		7,855,000.00		7,855,000.00	392,750.00	172,374.00
General Obligation Bonds/Notes – CIB	10/2019		8,395,000.00		8,395,000.00	419,750.00	184,224.00
General Obligation Bonds/Notes – CIB	07/2017	91,085,000.00		5,000.00	91,080,000.00	5,627,325.00	4,282,525.00
General Obligation Bonds/Notes – CIB	10/2015	80,860,000.00		1,975,000.00	78,885,000.00	5,702,363.00	3,721,113.00
General Obligation Bonds/Notes – CIB	10/2015	2,730,000.00			2,730,000.00	112,613.00	112,613.00
General Obligation Bonds/Notes – CIB	10/2015	5,485,000.00		1,740,000.00	3,745,000.00	2,012,250.00	274,250.00
General Obligation Bonds/Notes – CIB	05/2014	620,000.00			620,000.00	18,600.00	18,600.00
General Obligation Bonds/Notes – CIB	05/2014	8,775,000.00		8,775,000.00			202,860.00
General Obligation Bonds/Notes – CIB	07/2014	9,620,000.00		9,620,000.00			255,281.00
General Obligation Bonds/Notes – CIB	05/2012	7,440,000.00		7,440,000.00			123,989.00
General Obligation Bonds/Notes – CIB	07/2011	27,645,000.00		6,545,000.00	21,100,000.00	7,782,700.00	1,239,950.00
General Obligation Bonds/Notes – CIB	07/2011	5,600,000.00		1,765,000.00	3,835,000.00	2,134,894.00	372,413.00
General Obligation Bonds/Notes – CAB	07/2003	27,642,014.00			27,642,014.00		
Compensated Absences		2,409,265.37		18,268.18	2,390,997.19		
Other Post-Employment Benefits (OPEB)		220,045,727.00	44,009,145.00		264,054,872.00		
Net Pension Liability		340,534,480.00	13,621,379.00		354,155,859.00		
Totals for Debt Entered:		\$830,491,486.37	\$110,230,524.00	\$38,798,268.18	\$901,923,742.19	\$26,958,151.00	\$11,518,615.00



LEA : 114067002    Reading SD

Printed 1/7/2021 9:14:10 AM

**Accreted Interest Detail**  
**Governmental Funds/ Activities**

Debt Category	Debt Issue Date (MM/YYYY)	Beginning Accreted Interest	Additions	Reductions	Ending Accreted Interest	Ending bond Principal	Ending Principal Plus Accreted Interest
General Obligation Bonds/Notes – CAB	07/2003	33,664,373.00	3,137,194.00		36,801,567.00	27,642,014.00	64,443,581.00
<b>Totals for Debt Entered:</b>		<b>\$33,664,373.00</b>	<b>\$3,137,194.00</b>		<b>\$36,801,567.00</b>	<b>\$27,642,014.00</b>	<b>\$64,443,581.00</b>

LEA : 114067002     Reading SD

Printed 1/7/2021 9:14:13 AM

**General Fund (10)**

Section 1: Tuition/Purchased Services as Reported within Expenditure Detail	Amount
Tuition Reported in General Fund Expenditures 1000-560	28,520,436.79
Purchased Services in General Fund Expenditures 1000-594 and 1000-597	13,820.72
<b>Section 1 Total</b>	<b>\$28,534,257.51</b>

Section 2: Tuition Paid to Institution Types During Fiscal Year	Tuition Paid For Nonspecial Education	Tuition Paid For Special Education	Total
1    1306 Institutions			
2    Institutionalized Children's Programs		948,539.68	948,539.68
3    Juveniles Incarcerated in Adult Facilities			
4    Residential Treatment Facilities			
5    Other Local Education Agencies			
6    Brick and Mortar Charter Schools	2,895,785.59	2,344,230.92	5,240,016.51
7    Cyber Charter Schools	3,013,980.94	3,991,528.32	7,005,509.26
8    Career and Technology Centers	5,487,254.11		5,487,254.11
9    Approved Private Schools		9,387,143.19	9,387,143.19
10   PA Chartered Schools for the Deaf and Blind			
11   Private Residential Rehabilitative Institutions		465,794.76	465,794.76
12   Juvenile Detention Centers			
13   Special Program Jointures			
14   Other Tuition Not Included Elsewhere In This Section			
<b>Section 2 Total</b>	<b>\$11,397,020.64</b>	<b>\$17,137,236.87</b>	<b>\$28,534,257.51</b>

LEA : 114067002      Reading SD

Printed 1/7/2021 9:14:16 AM

Food Service / Cafeteria Operations Fund (51)

3000 Operation of Non-Instructional Services

Total

100 Personnel Services – Salaries	3,546,992.00
<b>Total Personnel Services – Salaries</b>	<b>\$3,546,992.00</b>
200 Personnel Services – Employee Benefits	
210 Group Insurance – Contracted Provider	1,073,703.10
220 Social Security Contributions	208,741.06
230 PSERS Retirement Contributions	937,604.45
250 Unemployment Compensation	9,047.87
260 Workers' Compensation	30,835.52
<b>Total Personnel Services – Employee Benefits</b>	<b>\$2,259,932.00</b>
400 Purchased Property Services	
430 Repairs and Maintenance Services	102,238.81
<b>Total Purchased Property Services</b>	<b>\$102,238.81</b>
500 Other Purchased Services	
591 Services Purchased Locally	219,849.00
<b>Total Other Purchased Services</b>	<b>\$219,849.00</b>
600 Supplies	
610 General Supplies	539,956.94
630 Food	5,334,665.06
650 Supplies & Fees – Technology Related	24,389.00
<b>Total Supplies</b>	<b>\$5,899,011.00</b>
800 Other Objects	
810 Dues and Fees	1,307.80
<b>Total Other Objects</b>	<b>\$1,307.80</b>
<b>Total 3000 Operation of Non-Instructional Services</b>	<b>\$12,029,330.61</b>

LEA : 114067002      Reading SD

Printed 1/7/2021 9:14:16 AM

Food Service / Cafeteria Operations Fund (51)

3100 Food Services	<u>Elementary</u>	<u>Secondary</u>	<u>Federal</u>	<u>Total</u>
100 <u>Personnel Services – Salaries</u>				
100 Personnel Services – Salaries				3,546,992.00
<b>Total Personnel Services – Salaries</b>				<b>\$3,546,992.00</b>
200 <u>Personnel Services – Employee Benefits</u>				
210 Group Insurance – Contracted Provider				1,073,703.10
220 Social Security Contributions				208,741.06
230 PSERS Retirement Contributions				937,604.45
250 Unemployment Compensation				9,047.87
260 Workers' Compensation				30,835.52
<b>Total Personnel Services – Employee Benefits</b>				<b>\$2,259,932.00</b>
400 <u>Purchased Property Services</u>				
430 Repairs and Maintenance Services				102,238.81
<b>Total Purchased Property Services</b>				<b>\$102,238.81</b>
500 <u>Other Purchased Services</u>				
591 Services Purchased Locally				219,849.00
<b>Total Other Purchased Services</b>				<b>\$219,849.00</b>
600 <u>Supplies</u>				
610 General Supplies				539,956.94
630 Food				5,334,665.06
650 Supplies & Fees – Technology Related				24,389.00
<b>Total Supplies</b>				<b>\$5,899,011.00</b>
800 <u>Other Objects</u>				
810 Dues and Fees				1,307.80
<b>Total Other Objects</b>				<b>\$1,307.80</b>
<b>Total 3100 Food Services</b>				<b>\$12,029,330.61</b>

	<u>Food Service(51)</u>	<u>Child Care Operations(52)</u>	<u>Other Enterprise(58)</u>	<u>Internal Service(60)</u>	<u>Total</u>
<b>3000 <u>Operation of Non-Instructional Services</u></b>					
3100 Food Services	12,029,330.61				12,029,330.61
<b>Total Operation of Non-Instructional Services</b>	<b>\$12,029,330.61</b>				<b>\$12,029,330.61</b>
<b>TOTAL ACTUAL EXPENDITURES &amp; OTHER FINANCING USES</b>	<b>\$12,029,330.61</b>				<b>\$12,029,330.61</b>

LEA : 114067002     Reading SD

Printed 1/7/2021 9:14:36 AM

Fund	School	School Number	Local Personnel	Local Nonpersonnel	State Personnel	State Nonpersonnel	Federal Personnel	Federal Nonpersonnel	Total	Explanation
10										
	Amanda E Stout El Sch	840								Will be providing expenditures after our audit.
	Central MS	8117								Will be providing expenditures after our audit.
	Glenside El Sch	844								Will be providing expenditures after our audit.
	Lauers Park El Sch	852								Will be providing expenditures after our audit.
	Millmont El Sch	8247								Will be providing expenditures after our audit.
	Northeast MS	858								Will be providing expenditures after our audit.
	Northwest El Sch	5206								Will be providing expenditures after our audit.
	Northwest MS	856								Will be providing expenditures after our audit.
	Reading SHS	8116								Will be providing expenditures after our audit.
	Riverside El Sch	845								Will be providing expenditures after our audit.
	Sixteenth & Haak El Sch	5028								Will be providing expenditures after our audit.
	Southern MS	855								Will be providing expenditures after our audit.
	Southwest MS	8457								Will be providing expenditures after our audit.
	Tenth & Green El Sch	5026								Will be providing expenditures after our audit.
	Tenth & Penn El Sch	7484								Will be providing expenditures after our audit.

LEA : 114067002    Reading SD

Printed 1/7/2021 9:14:36 AM

10	Thirteenth & Green El Sch	5027	Will be providing expenditures after our audit.
	Thirteenth & Union El Sch	832	Will be providing expenditures after our audit.
	Twelfth & Marion El Sch	5025	Will be providing expenditures after our audit.
	Tyson-Schoener El Sch	831	Will be providing expenditures after our audit.
Total			